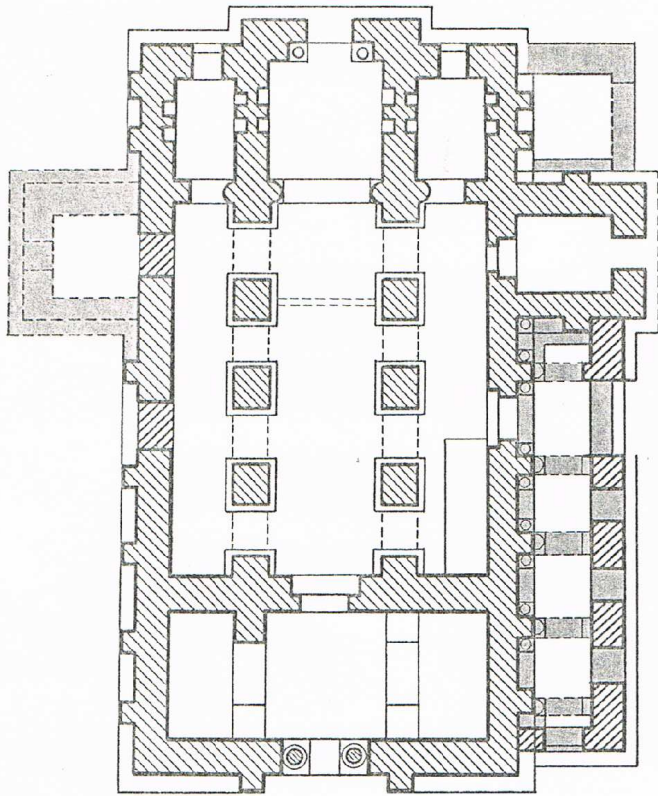
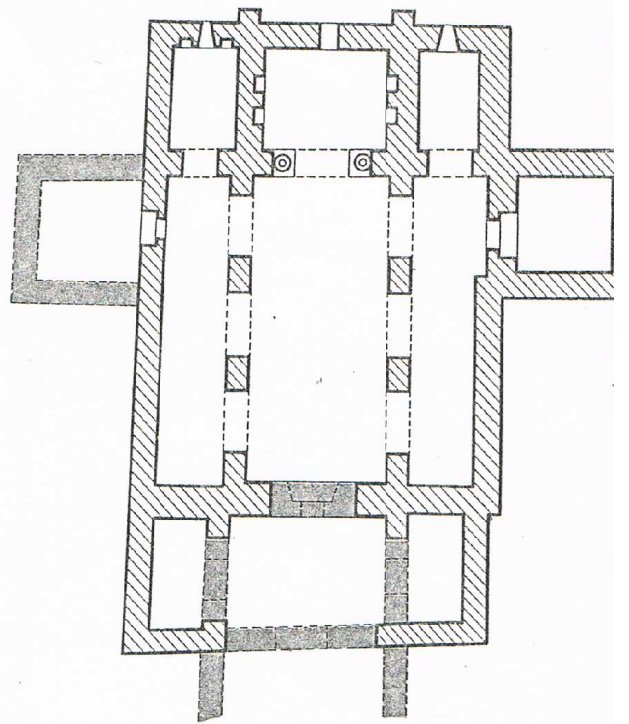


Oviedo en tiempos de Alfonso II



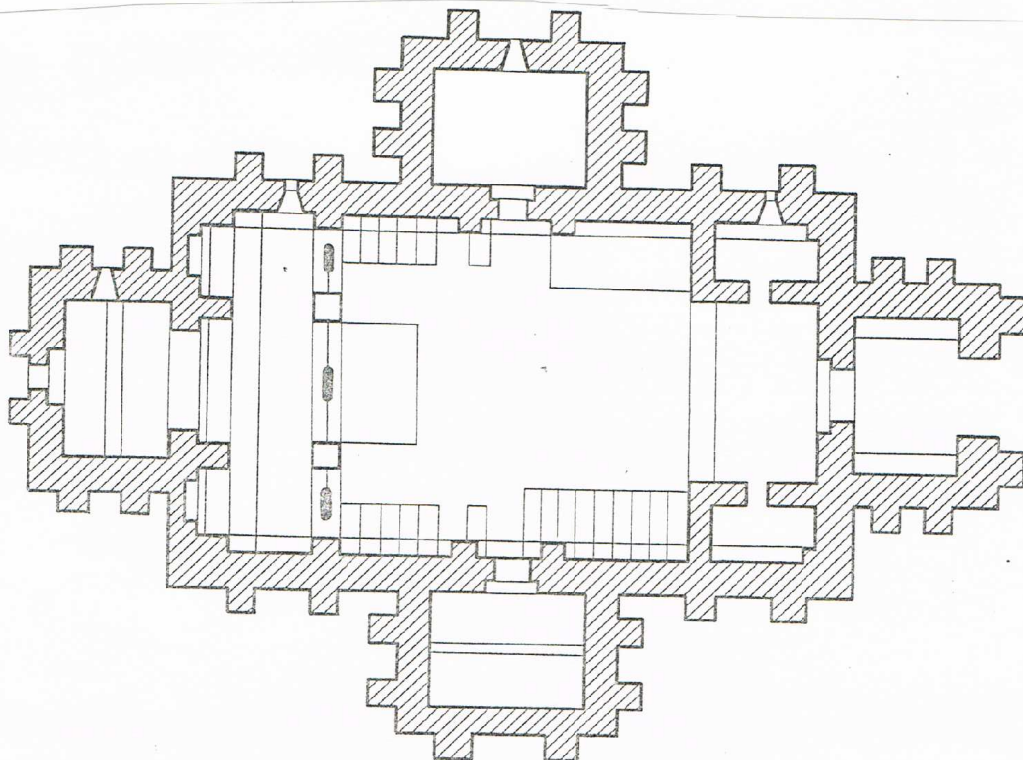
0 2 4 m.

*San Salvador de Valdediós. Según Lampérez.*

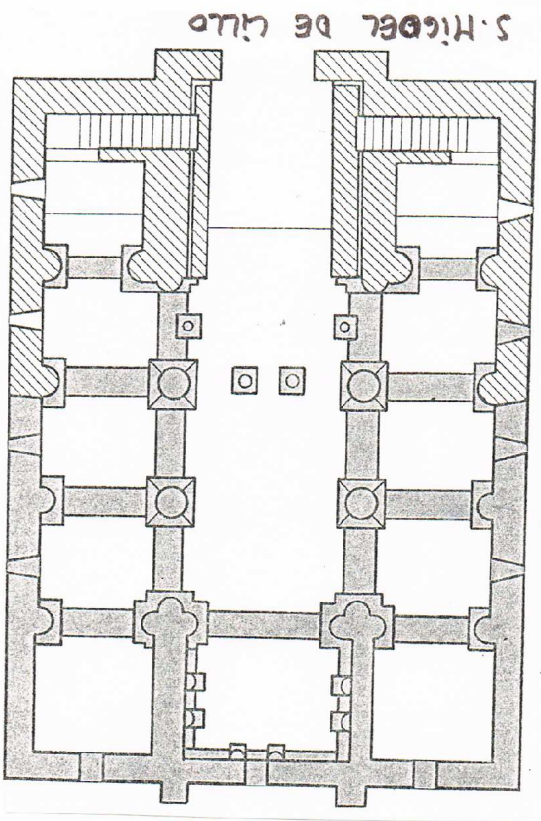
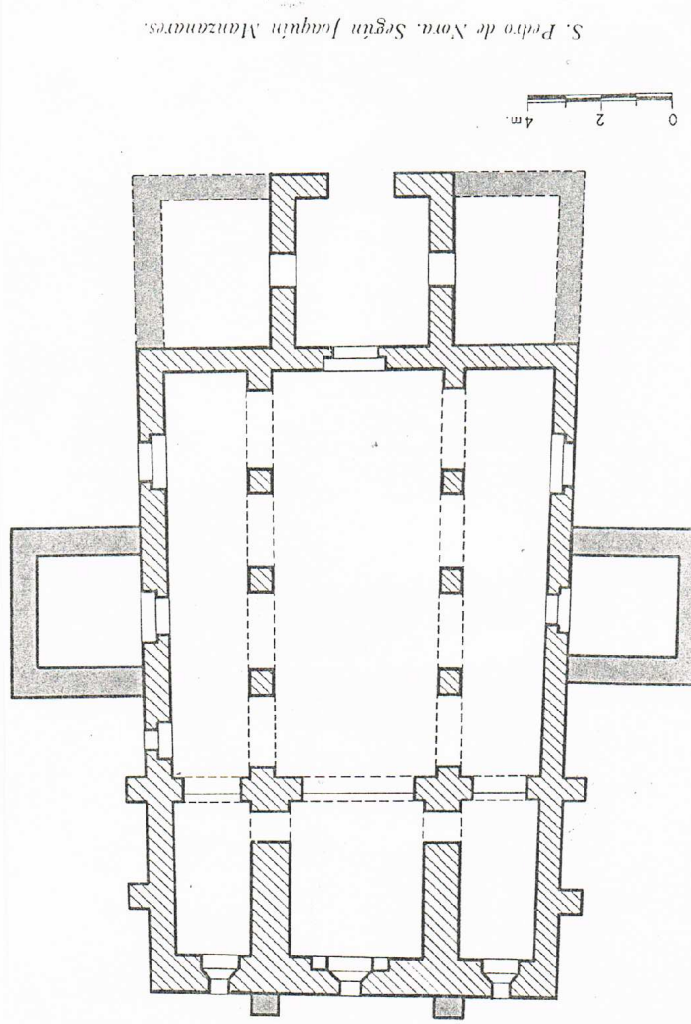
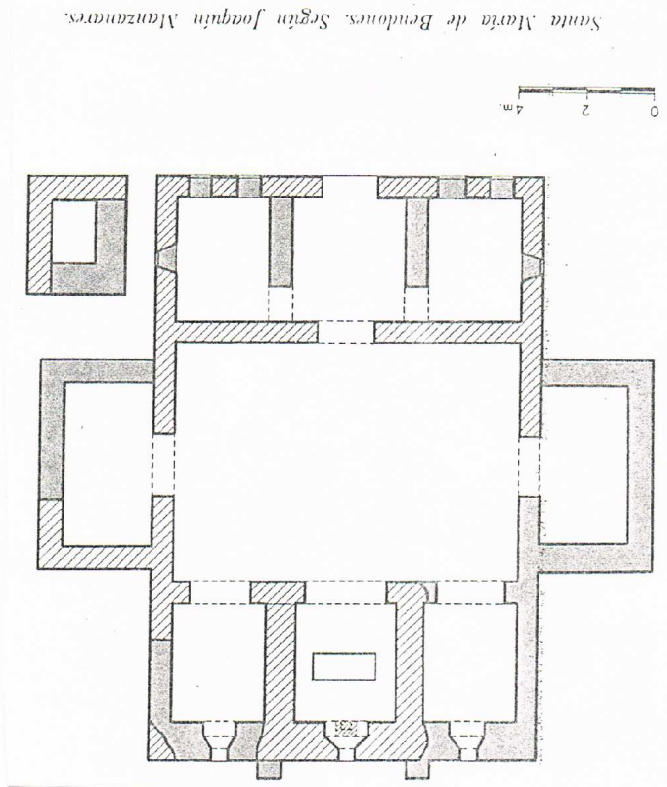
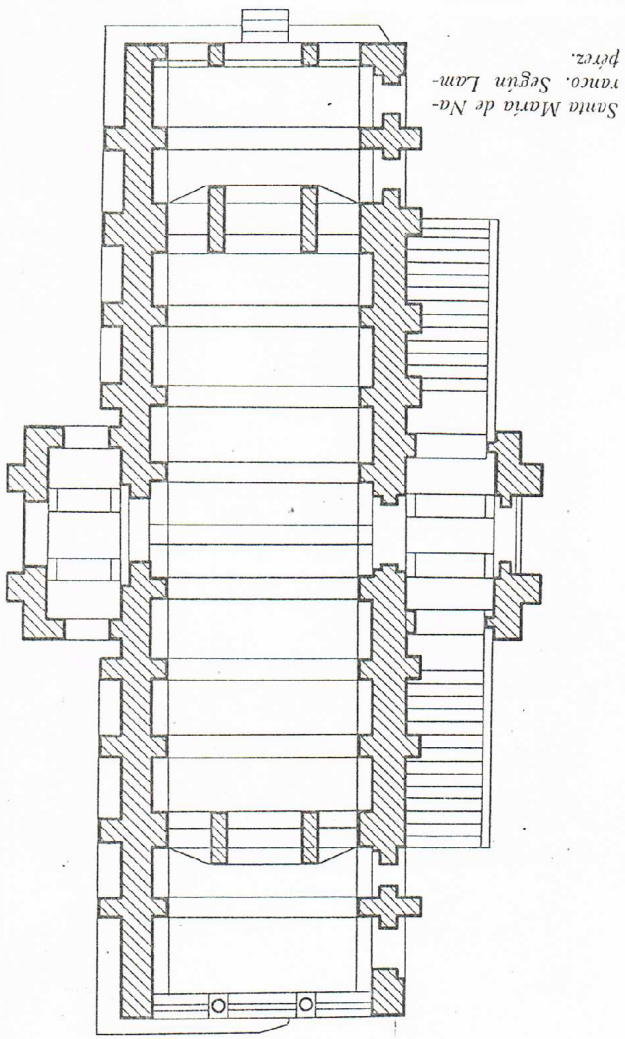


0 2 4 m.

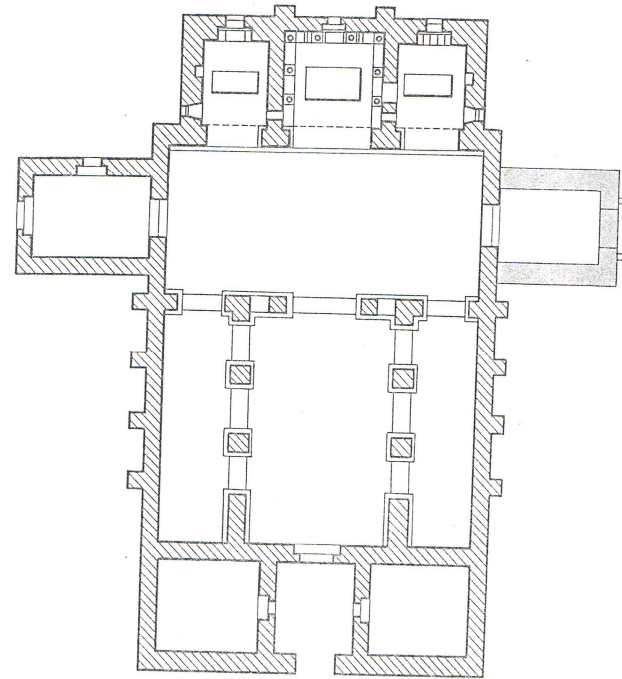
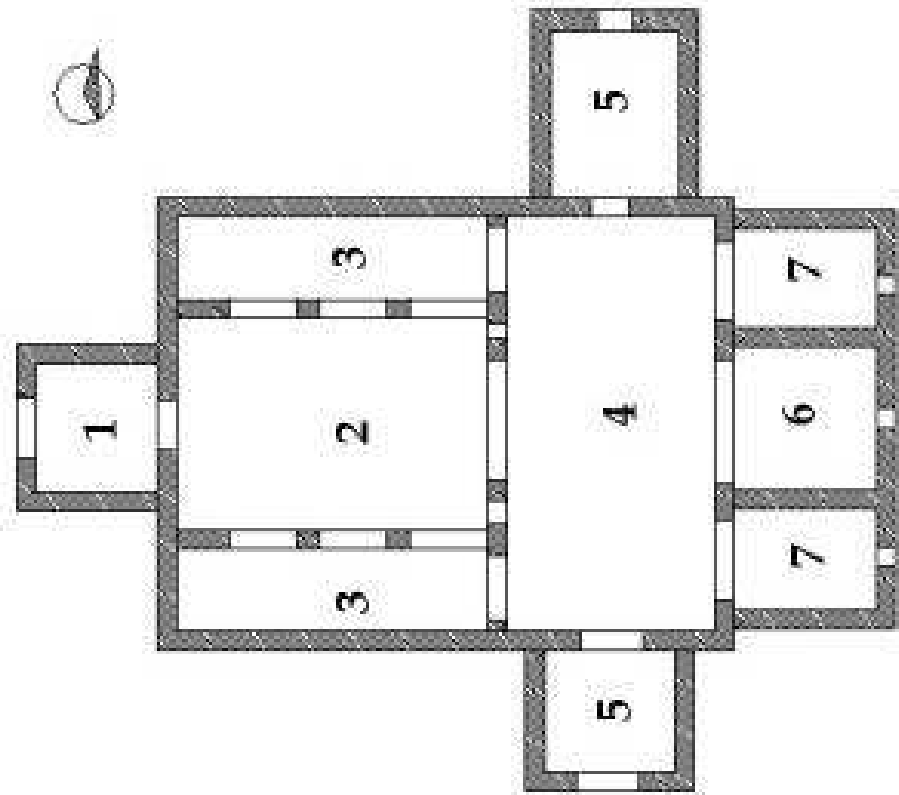
*San Adriano de Tuñón. Según Joaquín Manzanares.*



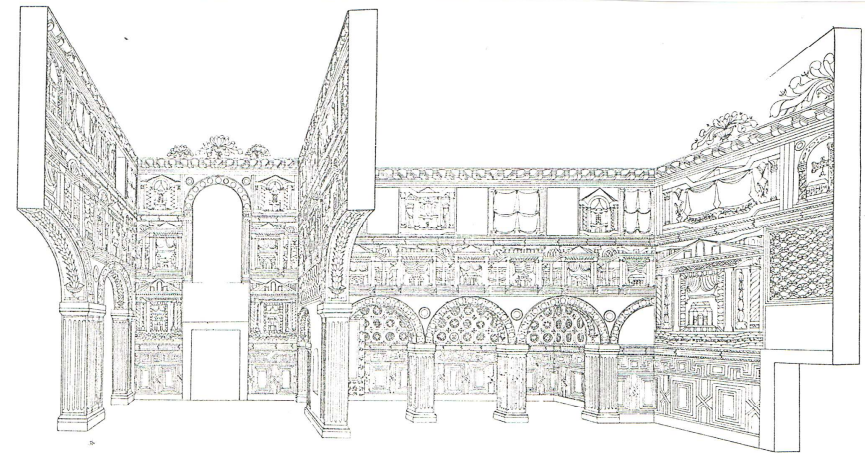
*Santa Cristina de Lena. Según Lampérez.*



# S. JULIÁN DE PRADOS



*S. Julián de los Prados. Según Hanson.*

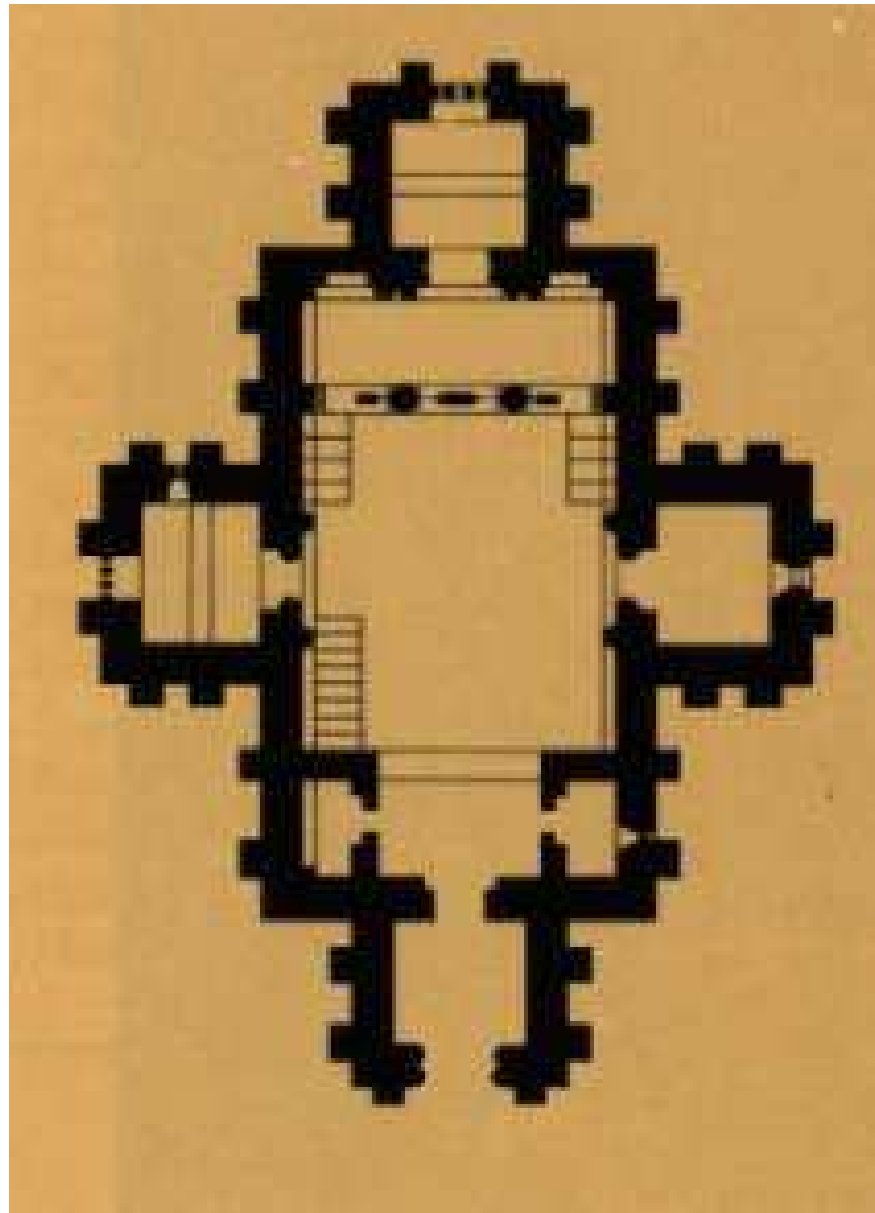


Santullano (Oviedo). Pinturas del interior (según M. Berenguer)



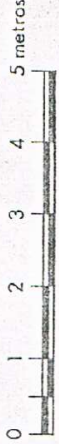
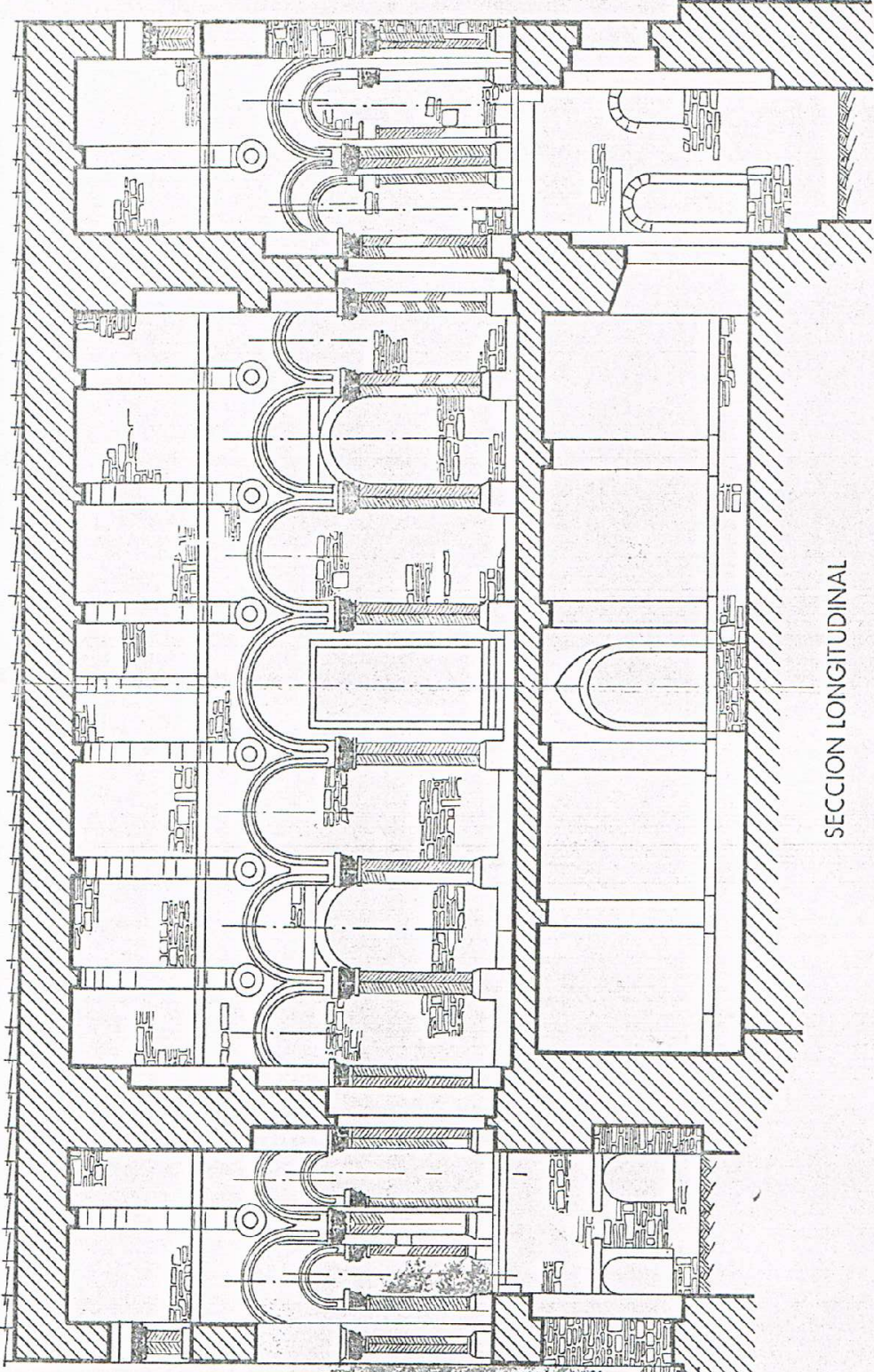


# STA. CRISTINA DE LENA





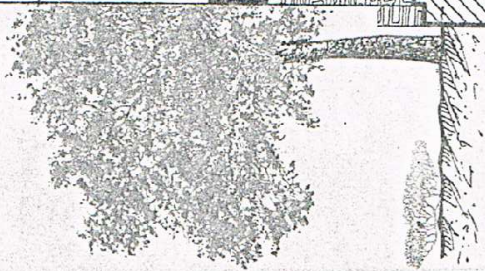




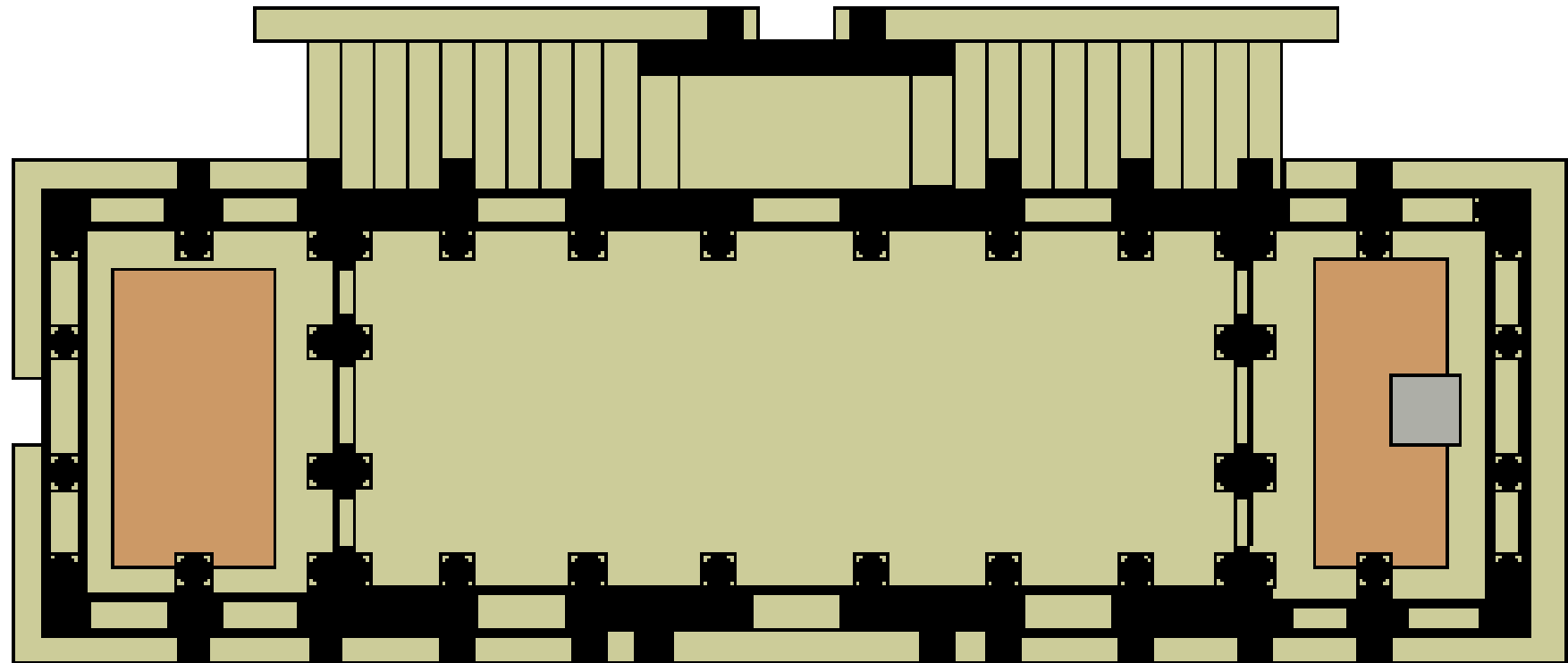
SECCION LONGITUDINAL

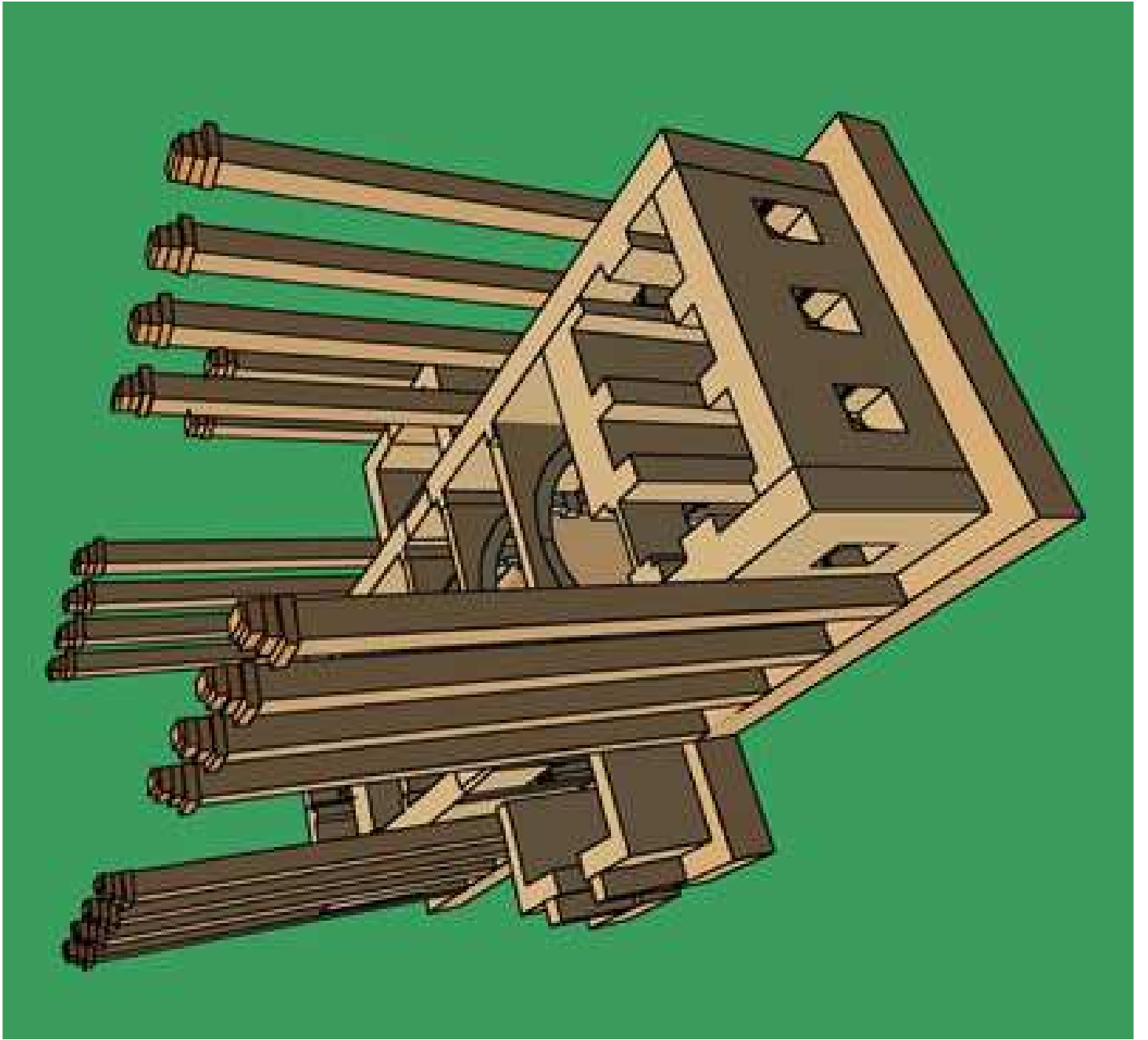
# Santa Maria de Naranco

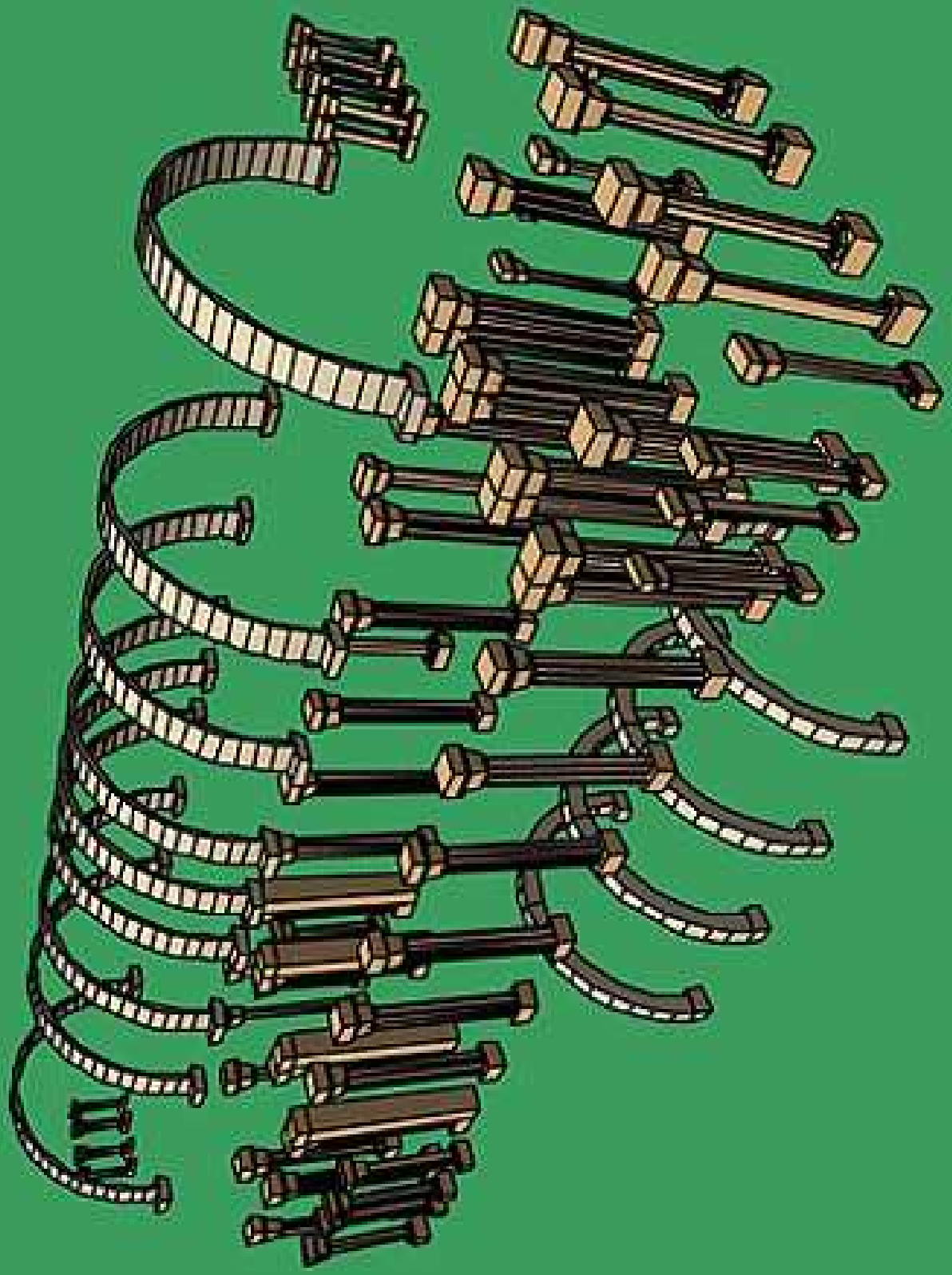
SEGUN L. MENENDEZ PIDAL

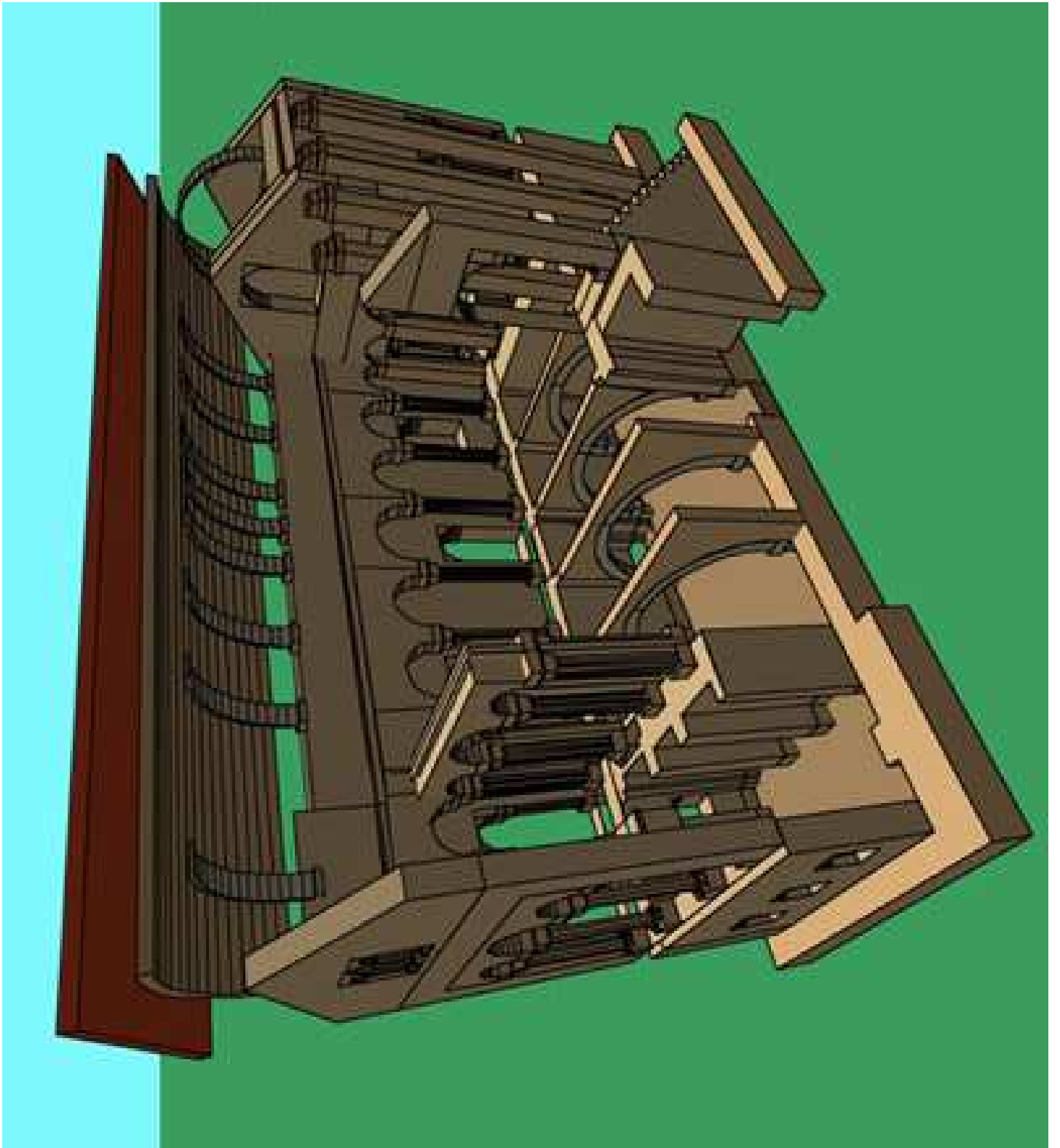


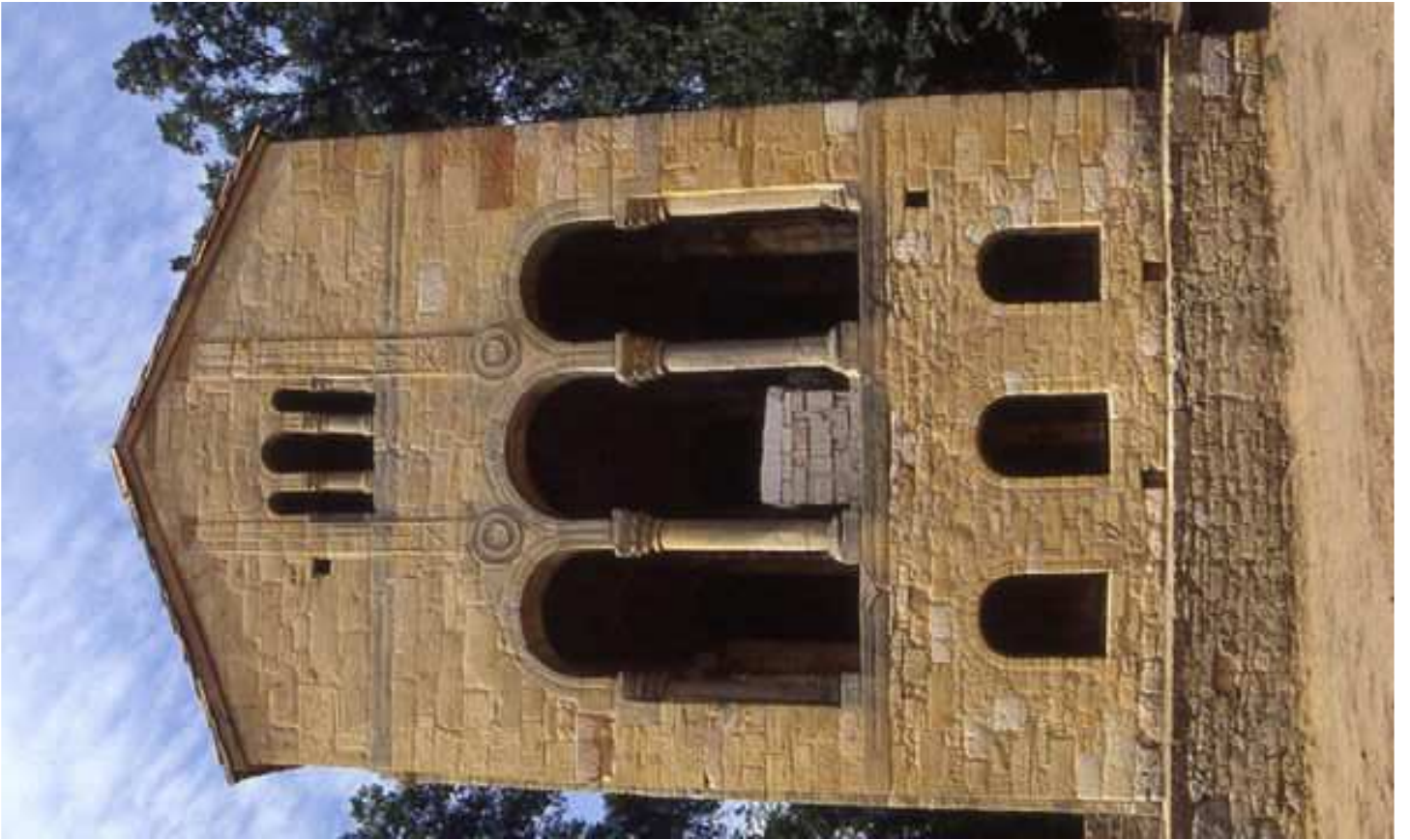
# STA. M<sup>a</sup> DEL NARANCO



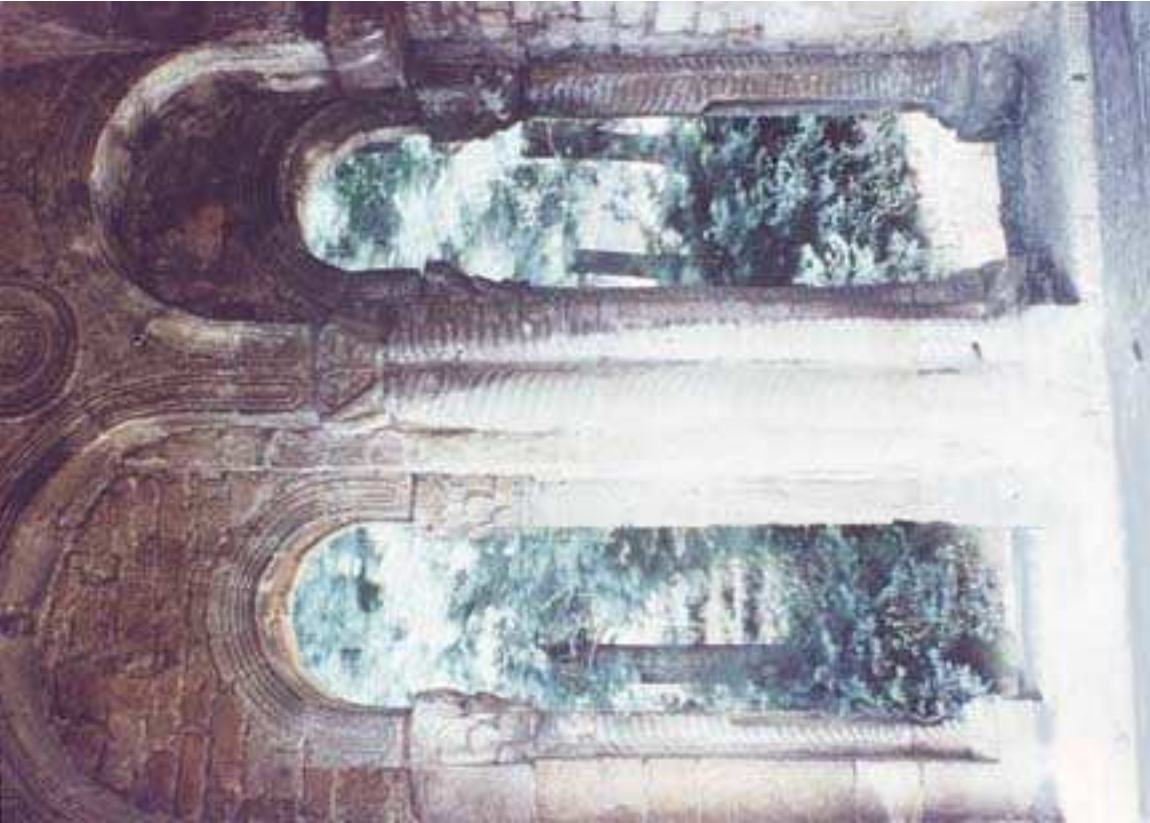








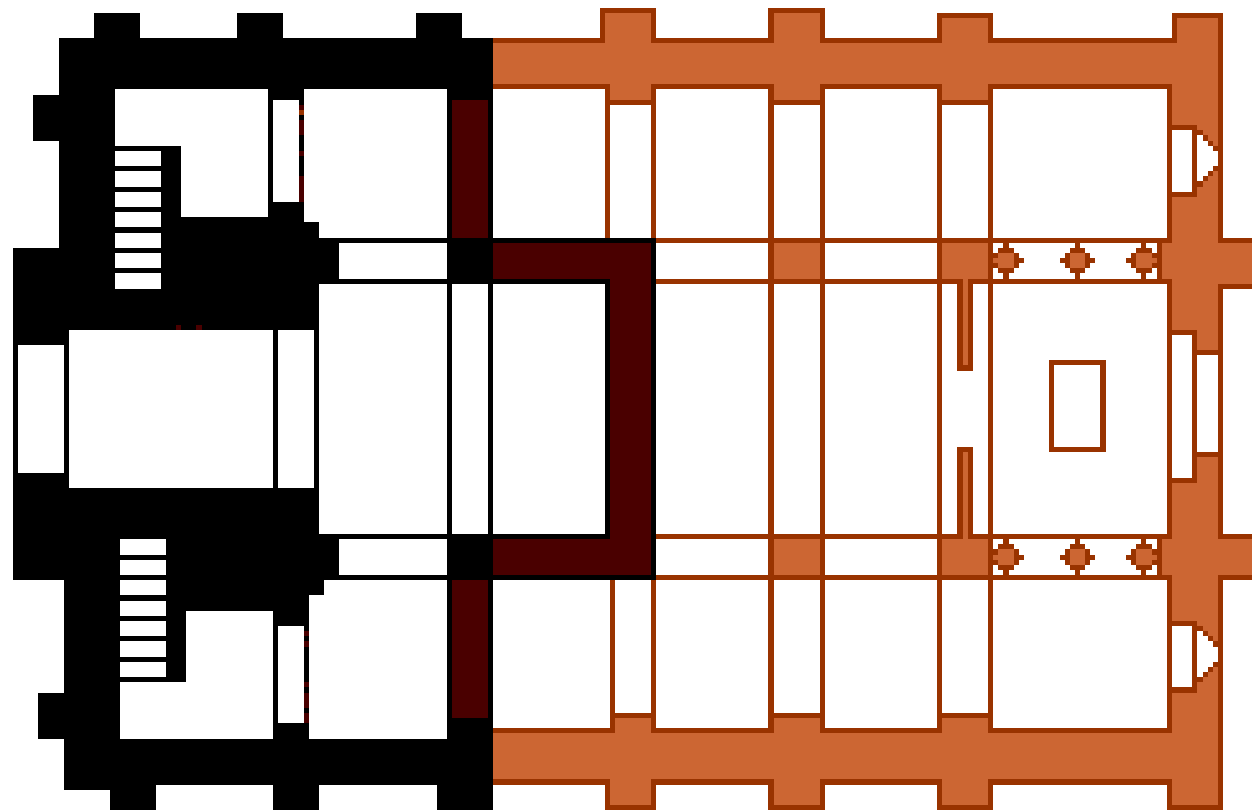








# S. MIGUEL DE LILLO

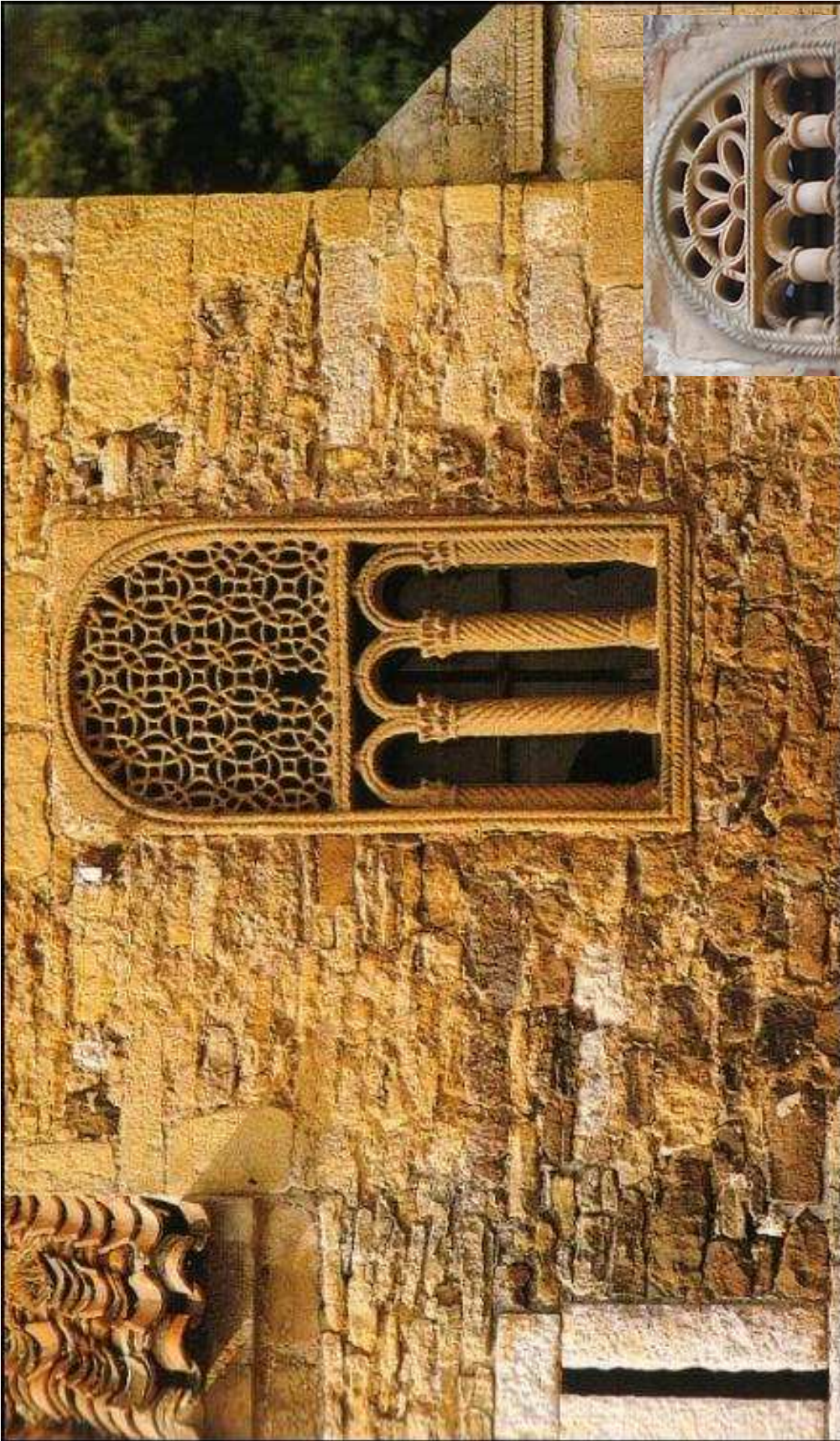




S. MIGUEL DE  
LILLO: JAMBAS







# S. SALVADOR DE VALDEDIÓS

