

LOS PRIMEROS EXVOTOS **DE BRONCE**



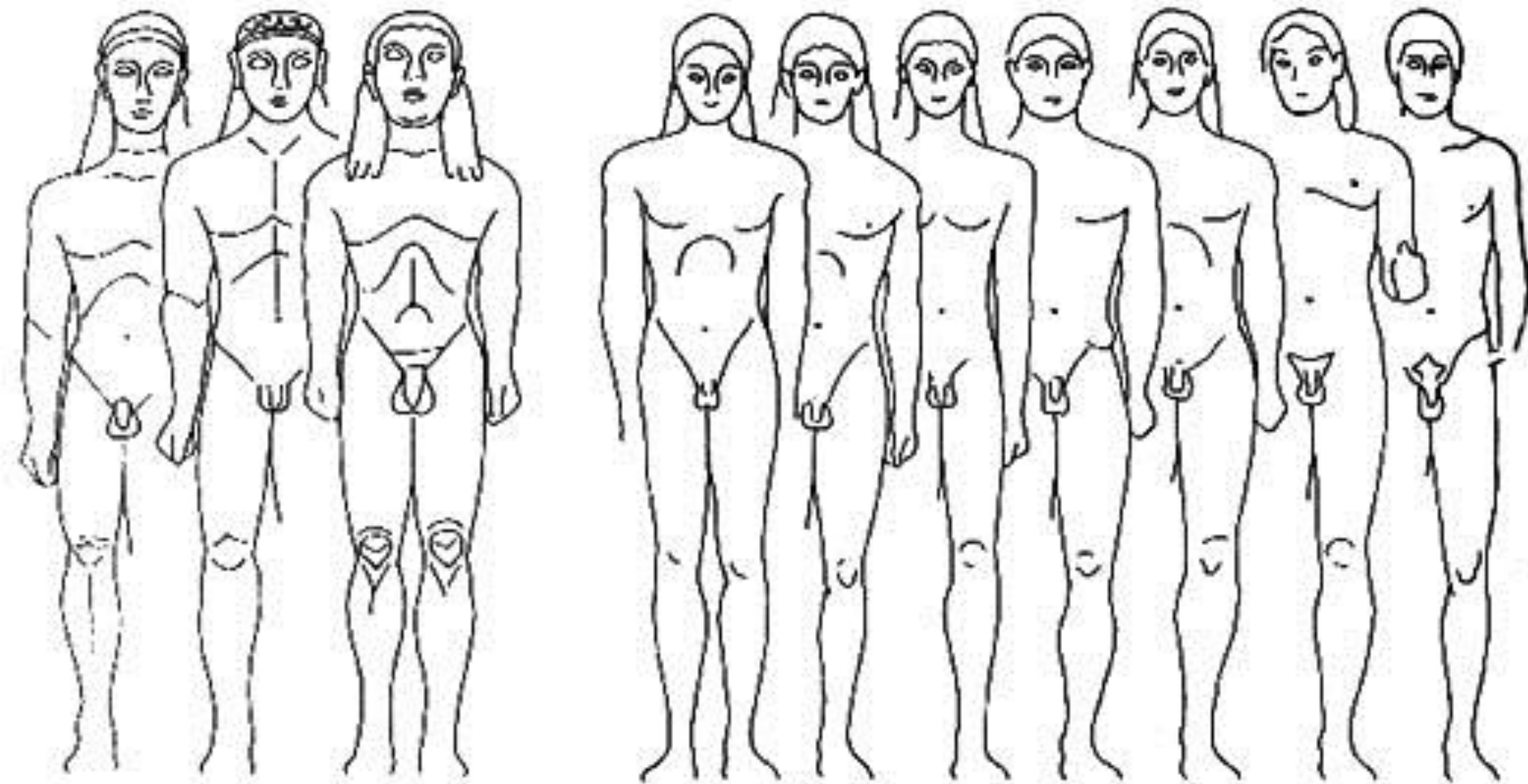


ESCULTURA ARCAICA

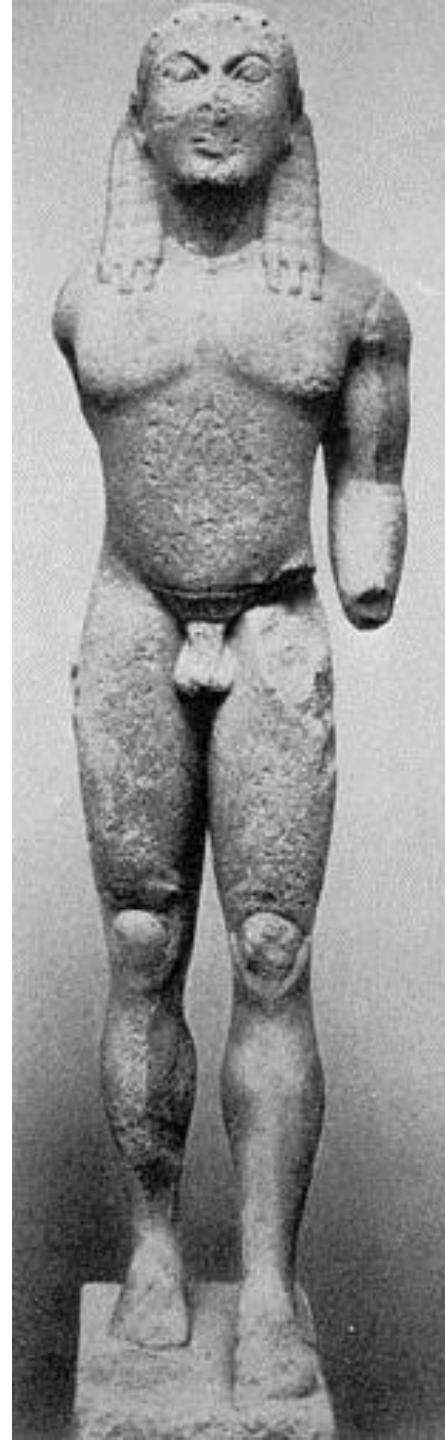
DAMA DE AUXERRE

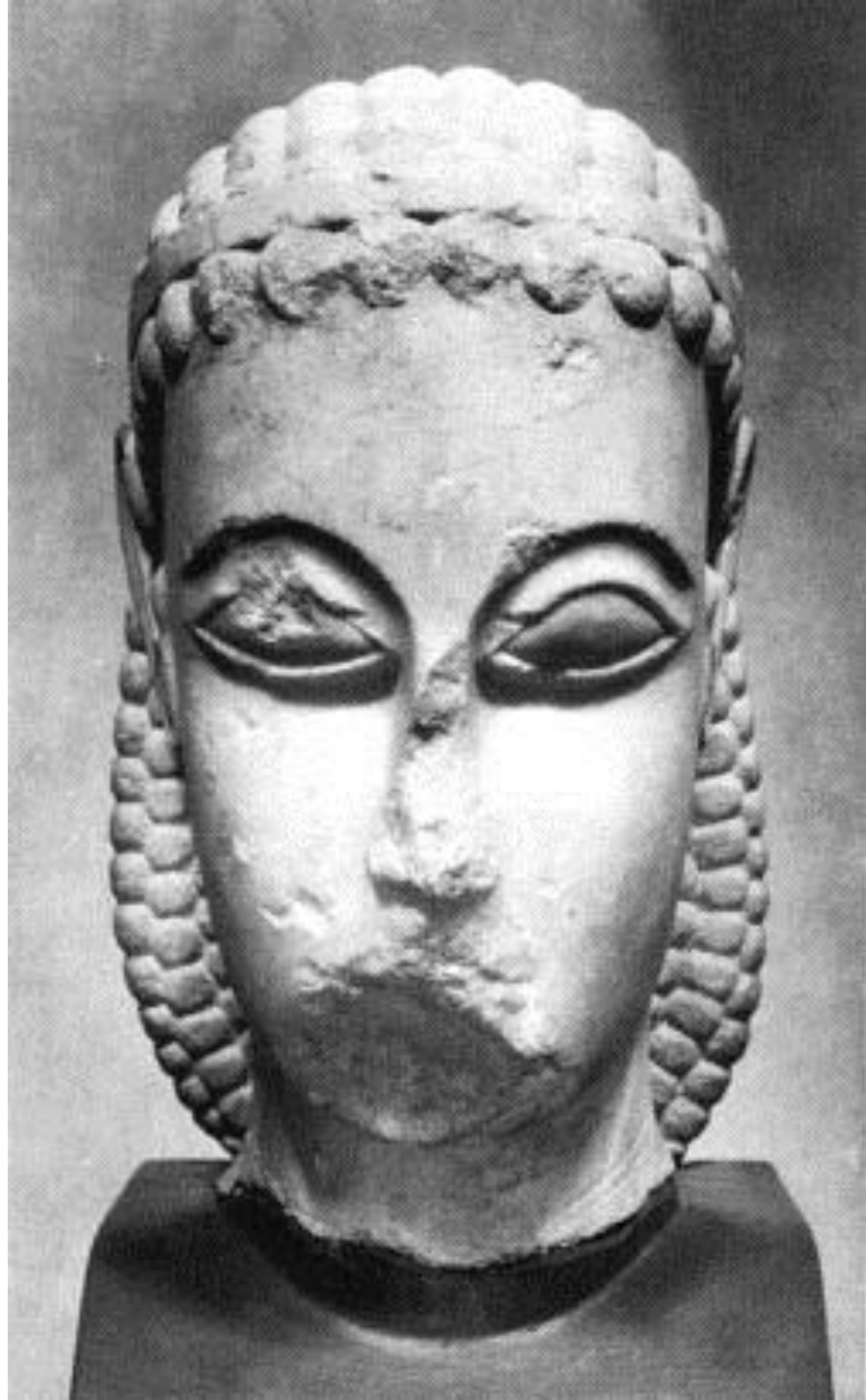


EVOLUCIÓN DEL KOUROS







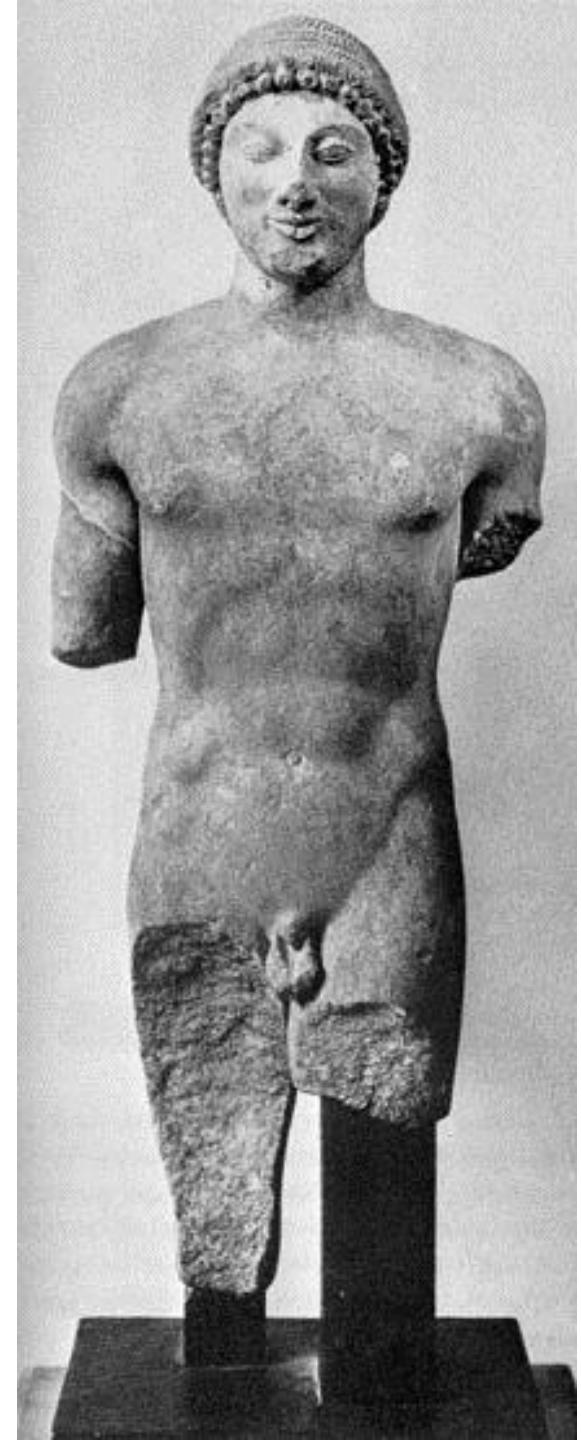
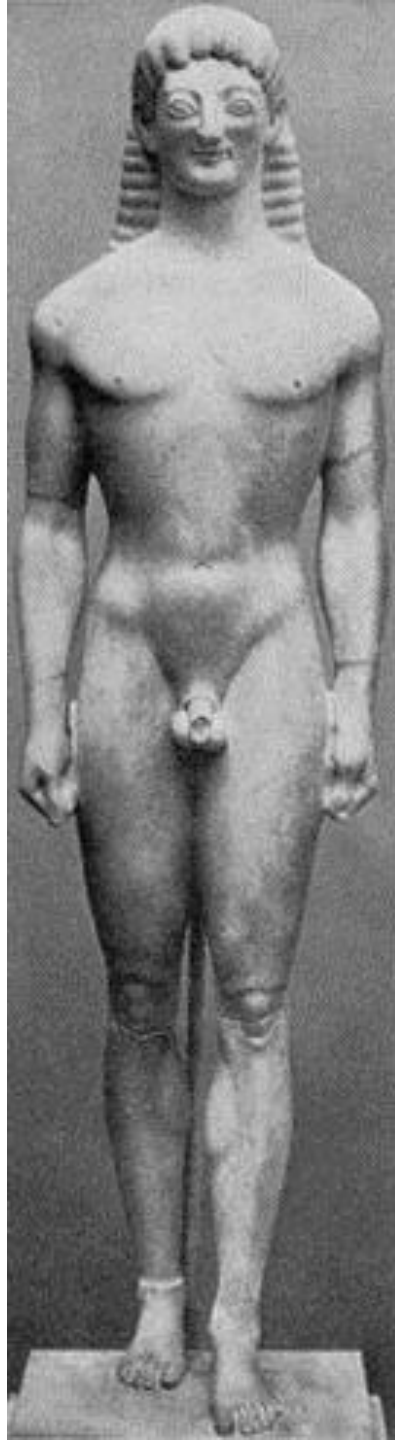


MOSCÓFORO





EVOLUCIÓN:
EL APOLO DE TENEA (PP.VI)
FRENTE A UN KOUROS DE
FINES DEL VI





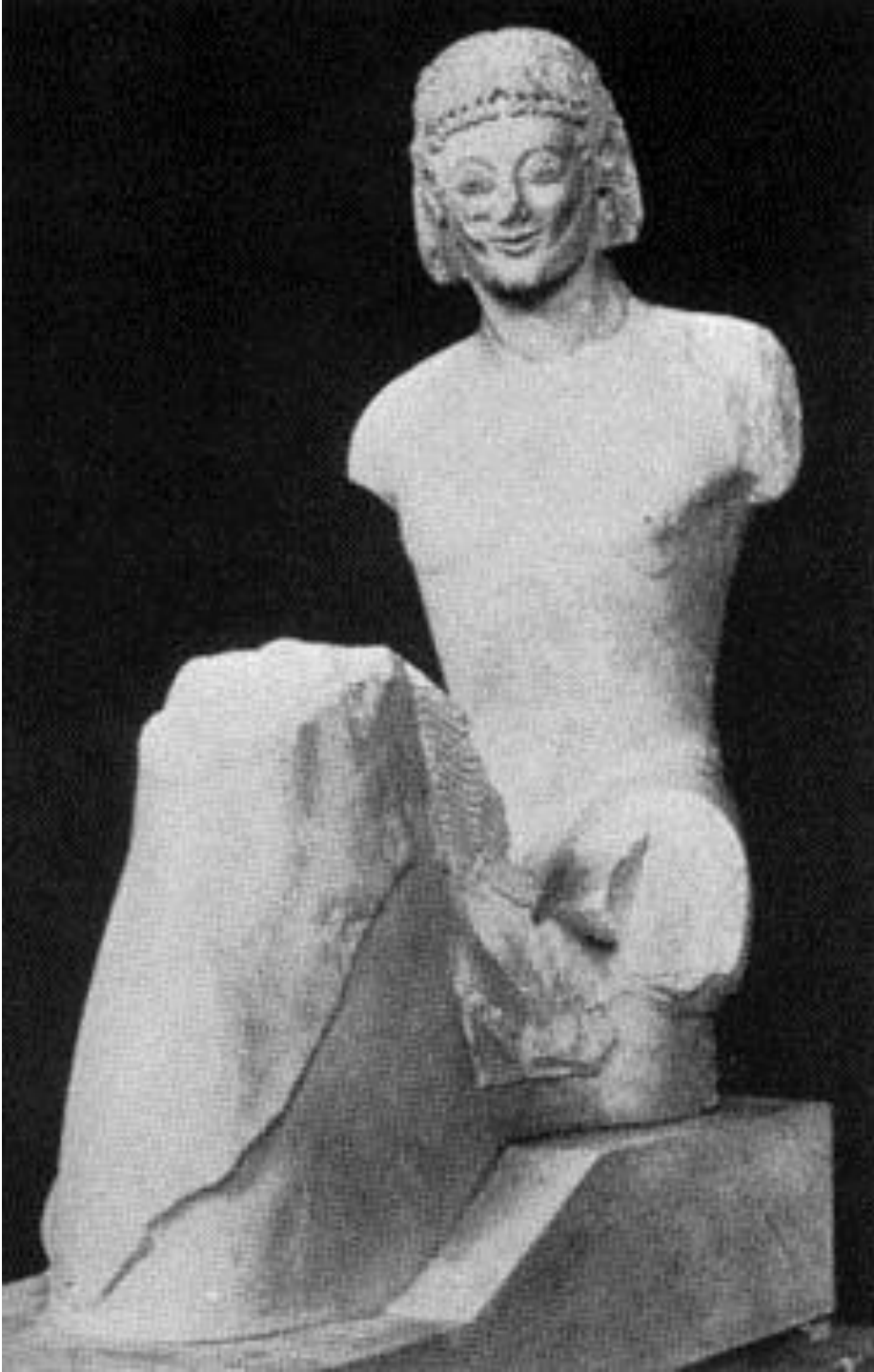
EFEBO DE KRITIOS



EFEBO
"RUBIO"



JINETE RAMPÍN



HERA DE SAMOS



DOS KORAI JÓNICAS





TEMPLO DE CORFÚ



EL PERÍODO SEVERO

(500-450)

TEMPLODE AFAIA EN EGINA

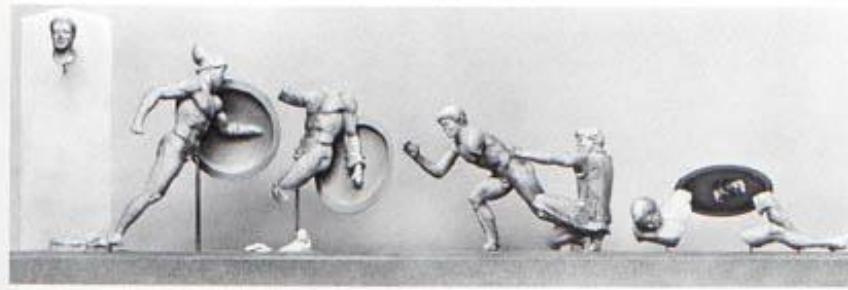


Fig. 186. Egne, temple d'Aphaia: fronton Est, vue partielle. Munich, Glyptothèque.



Fig. 187. Egne, temple d'Aphaia, blessé du fronton Ouest. Marbre de Paros. L. 1,59 m. Munich, Glyptothèque.

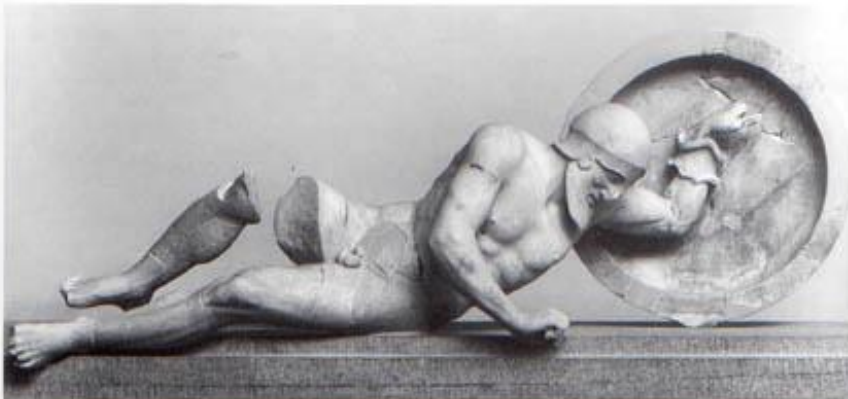


Fig. 188. Egne, temple d'Aphaia, blessé du fronton Est. Marbre de Paros. L. 1,80 m. Munich, Glyptothèque.

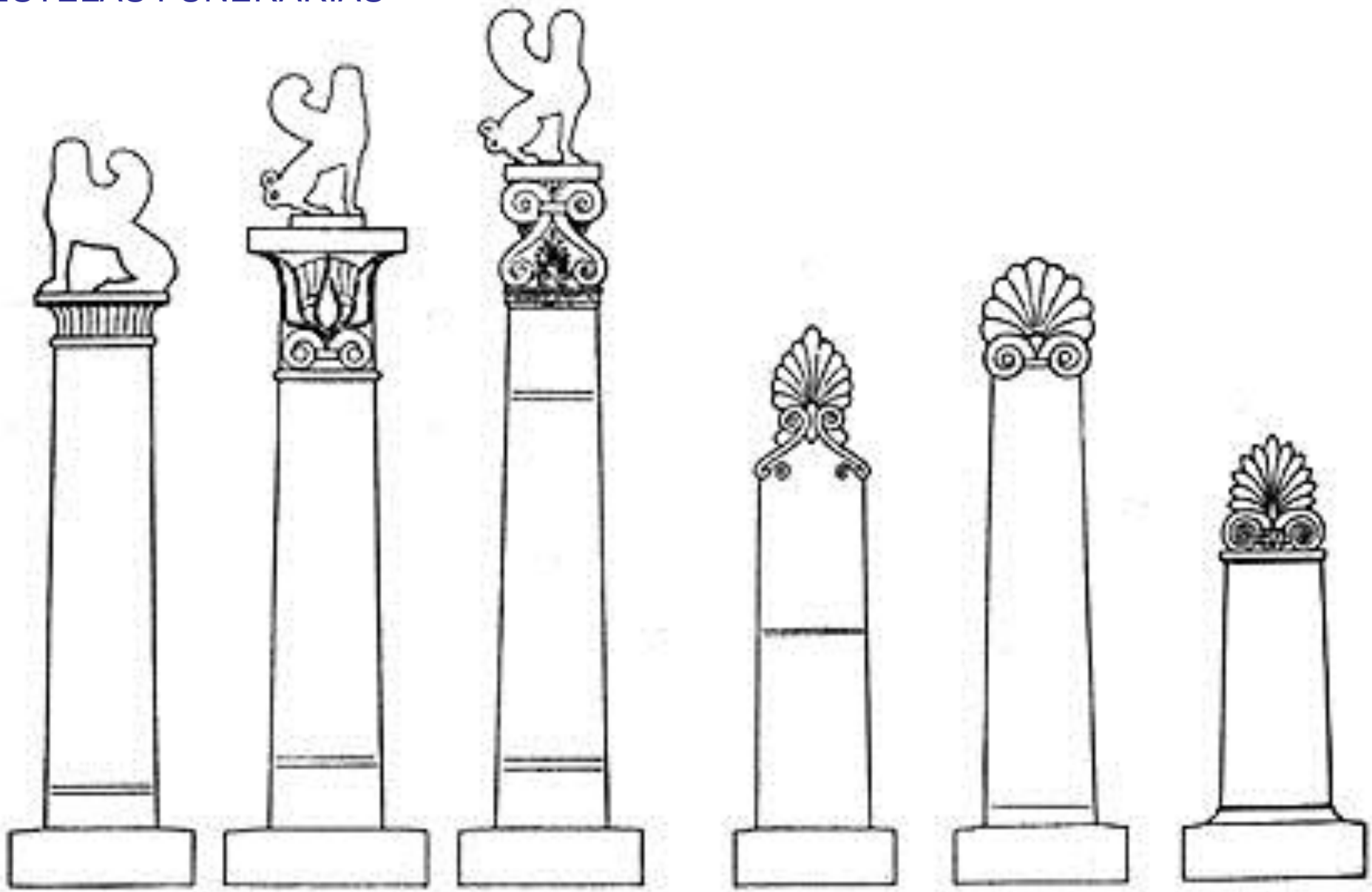




IDEM-RECONSTRUCCIÓN



ESTELAS FUNERARIAS



ESTELAS FUNERARIAS



RELIEVE DE
ELEUSIS



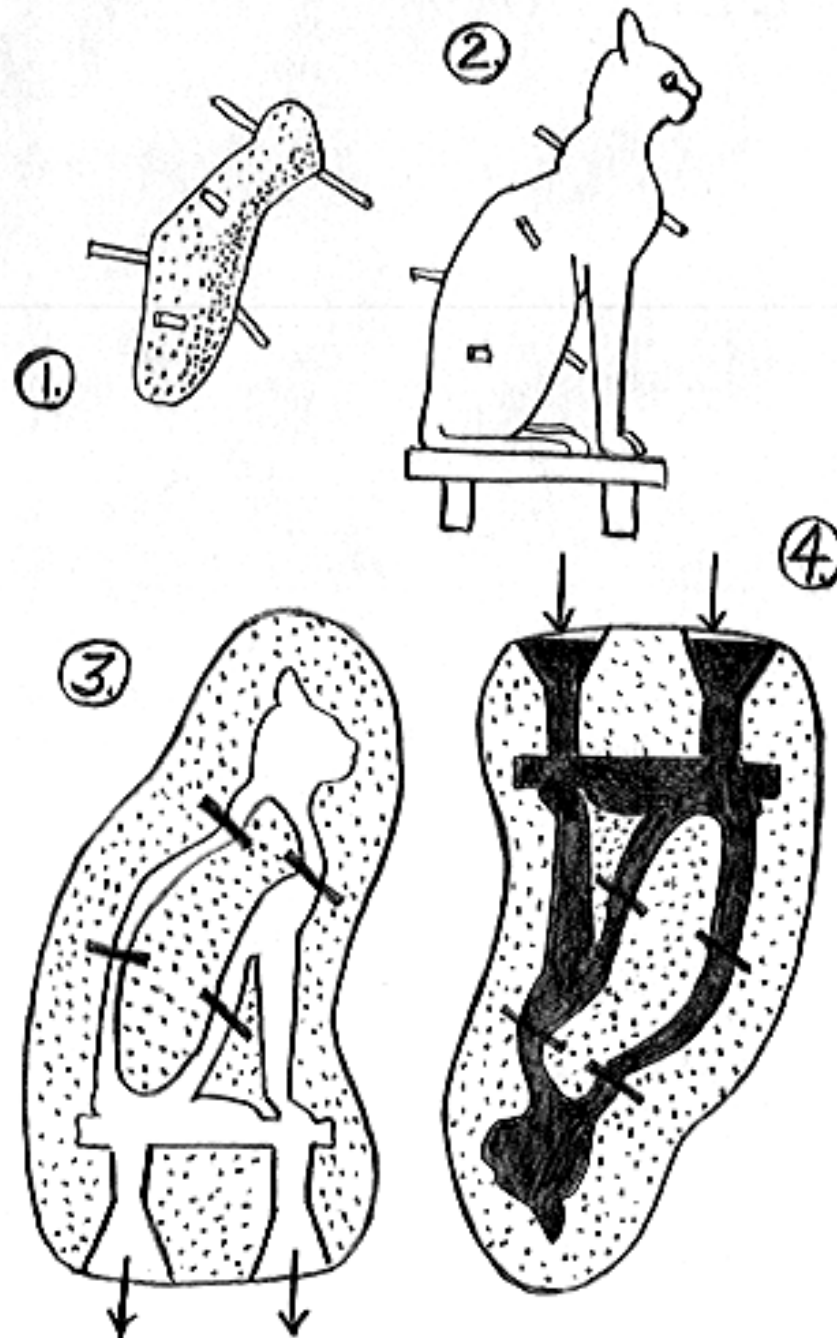
TRONO LUDOVISI







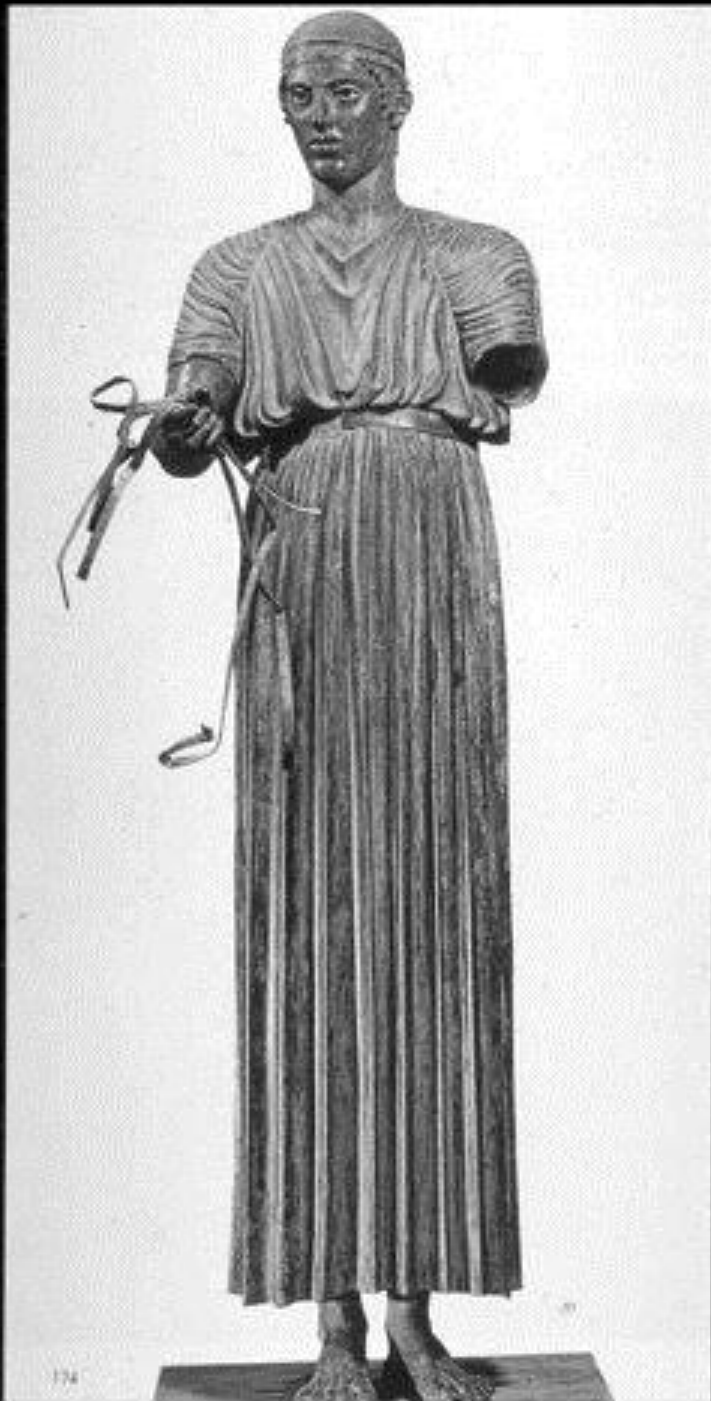
TÉCNICA DE LA CERA PERDIDA



APOLO PIOMBINO



AURIGA DE DELFOS

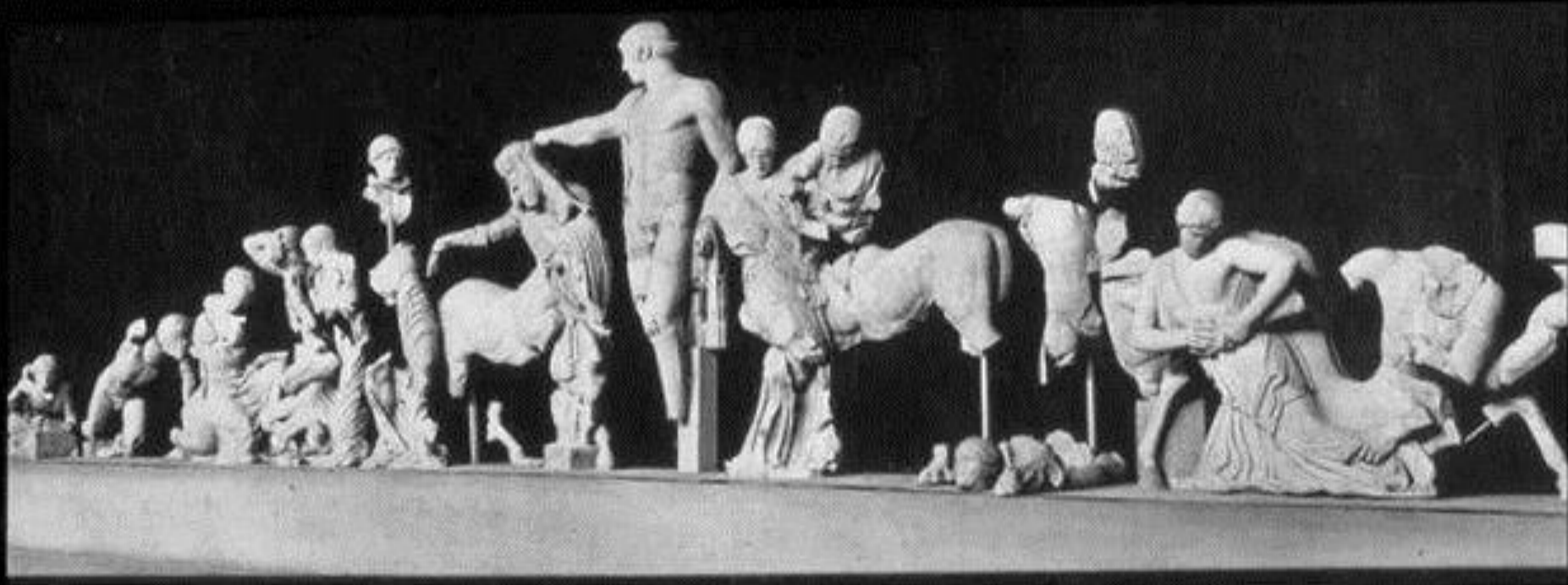




POSEIDÓN DEL CABO ARTEMISIÓN



FRONTÓN-TEMPLO DE ZEUS EN OLIMPIA





MIRÓN-EL DISCÓBOLO



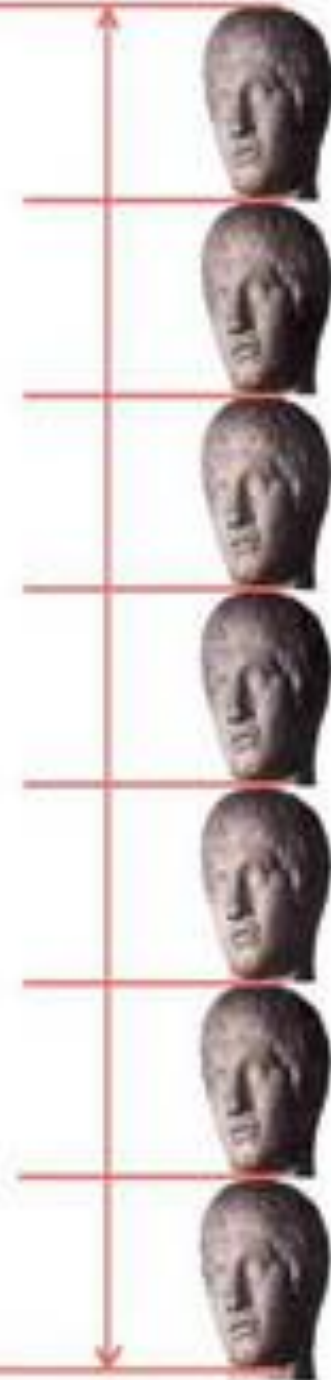
EL PLENO CLASICISMO

SEGUNDA MITAD DEL SIGLO V

POLICLETO
EL DIADUMENOS



POLICLETO
EL DORÍFORO
EL CANON



LOS BRONCES DE RIACE





POSIBLE ESTADO ORIGINAL DEL ZEUS DEL TEMPLO DE OLIMPIA-FIDIAS



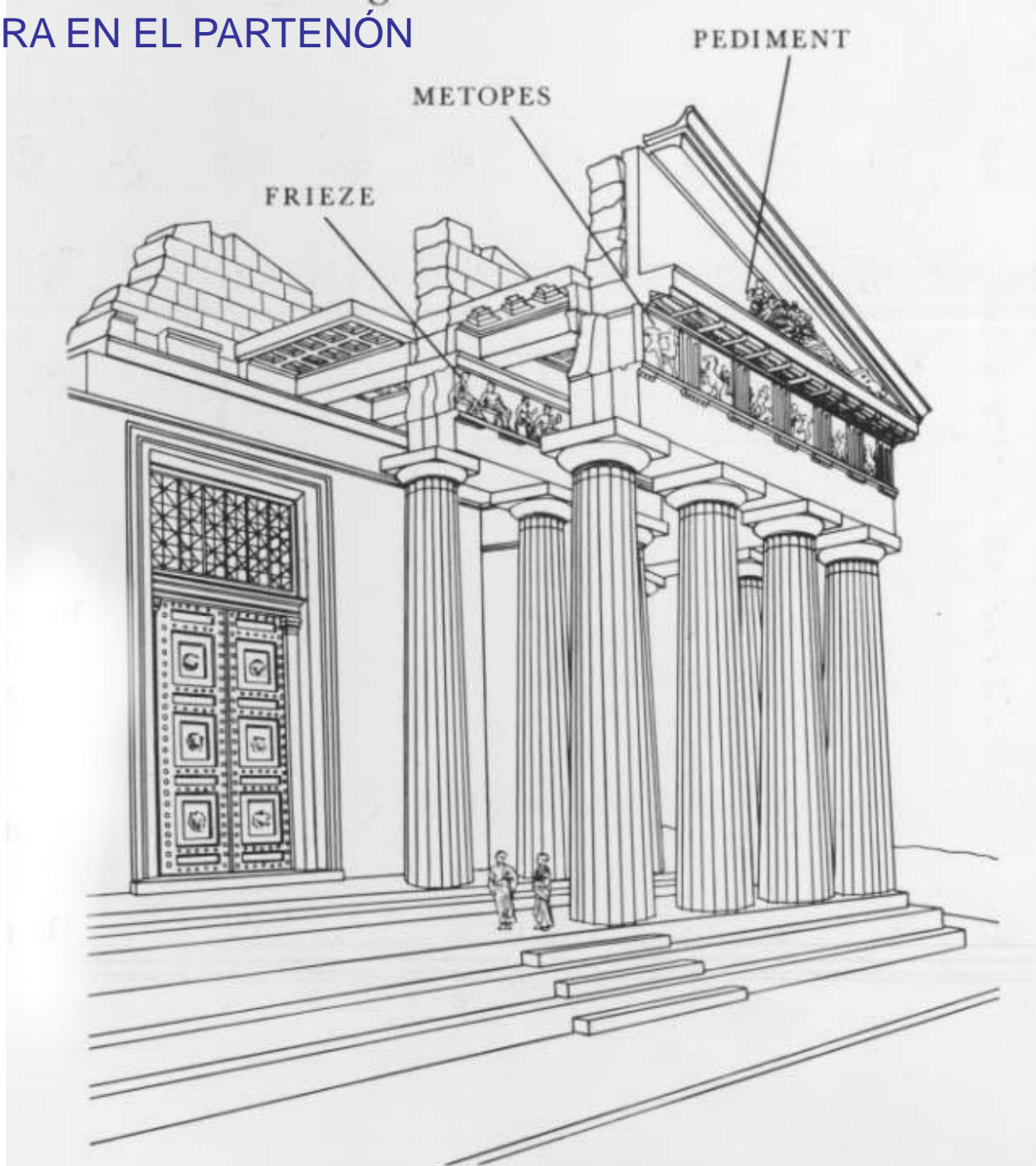
ASÍ PUDO SER LA ATENEA CRISELEFANTINA DE FIDIAS EN EL PARTENÓN



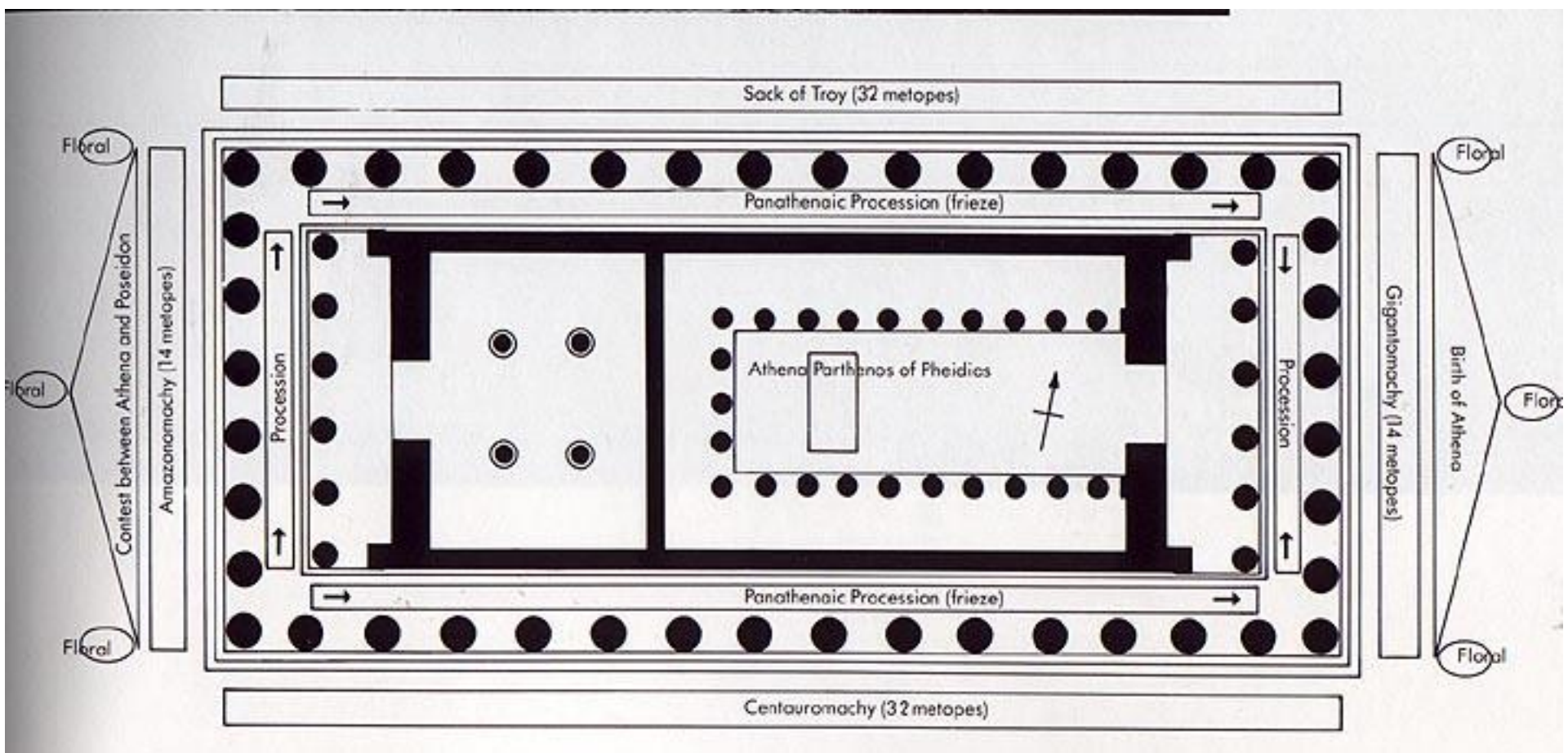


Interior del Partenón, según Kostoff

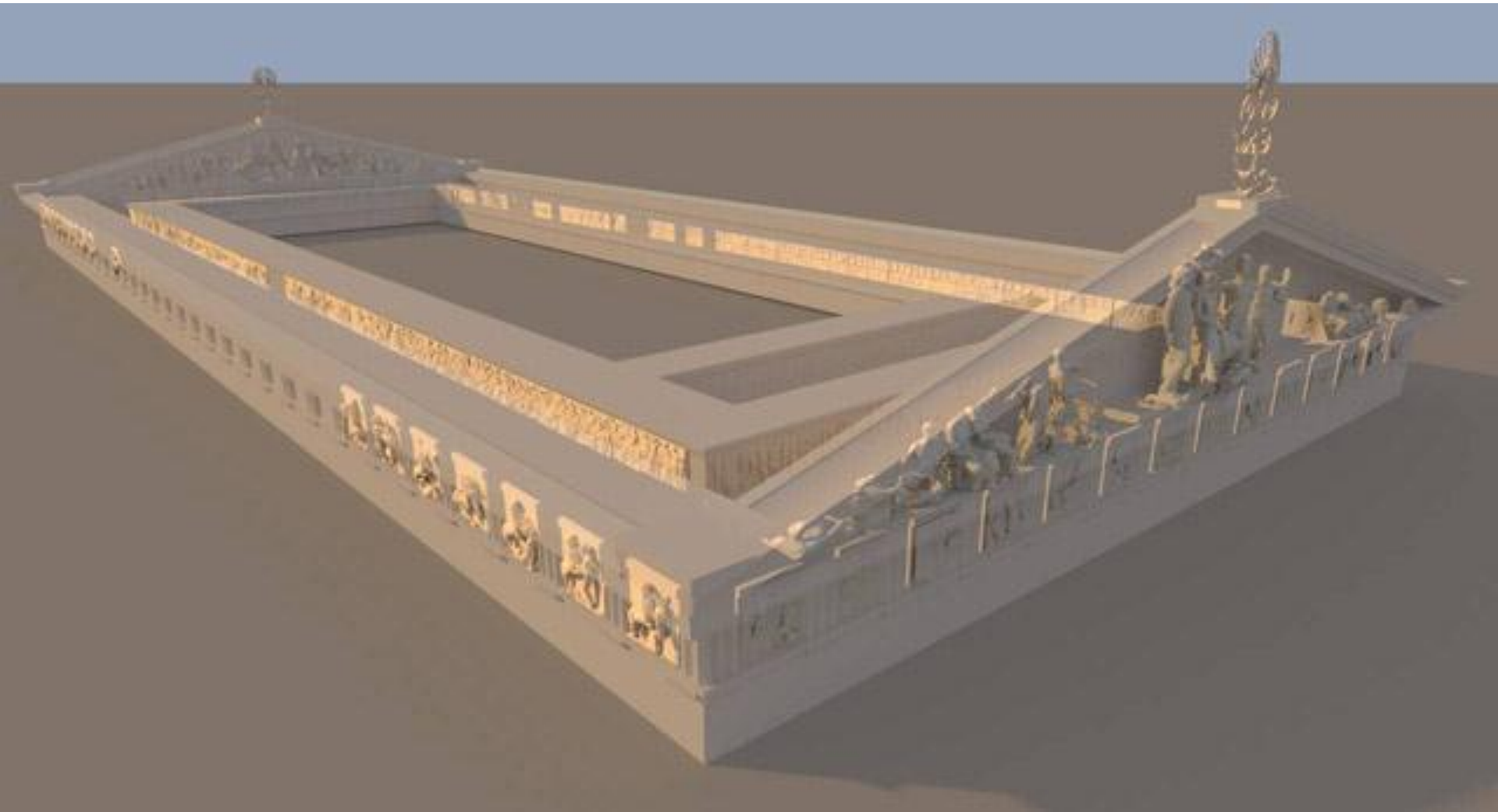
LA ESCULTURA EN EL PARTENÓN



LA ESCULTURA EN EL PARTENÓN



EXTERIOR: FRONTONES Y METOPAS



LOS FRONTONES



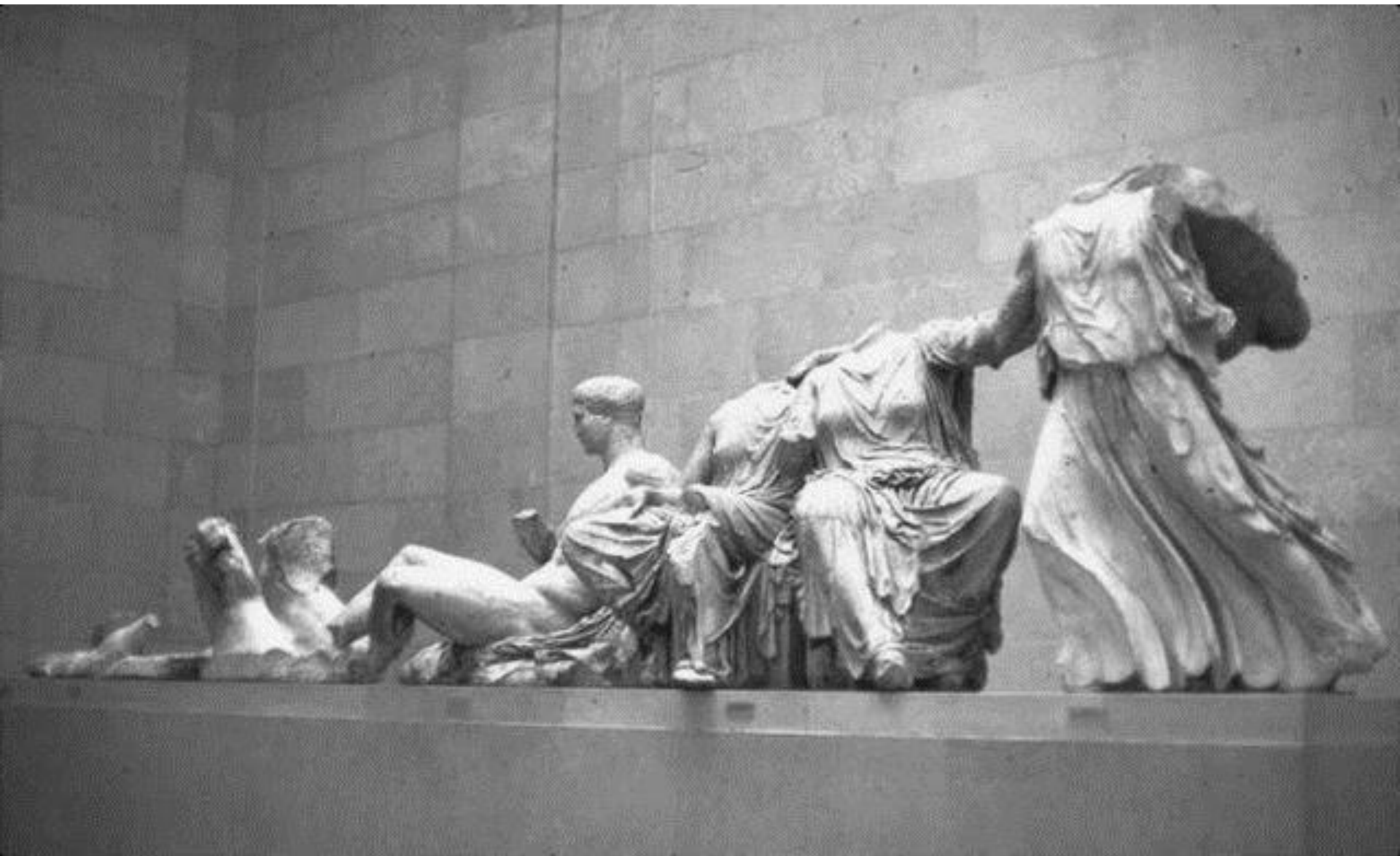
FRONTÓN OESTE: LA DISPUTA ENTRE ATENEA Y POSEIDÓN (RECONSTRUCCIÓN)



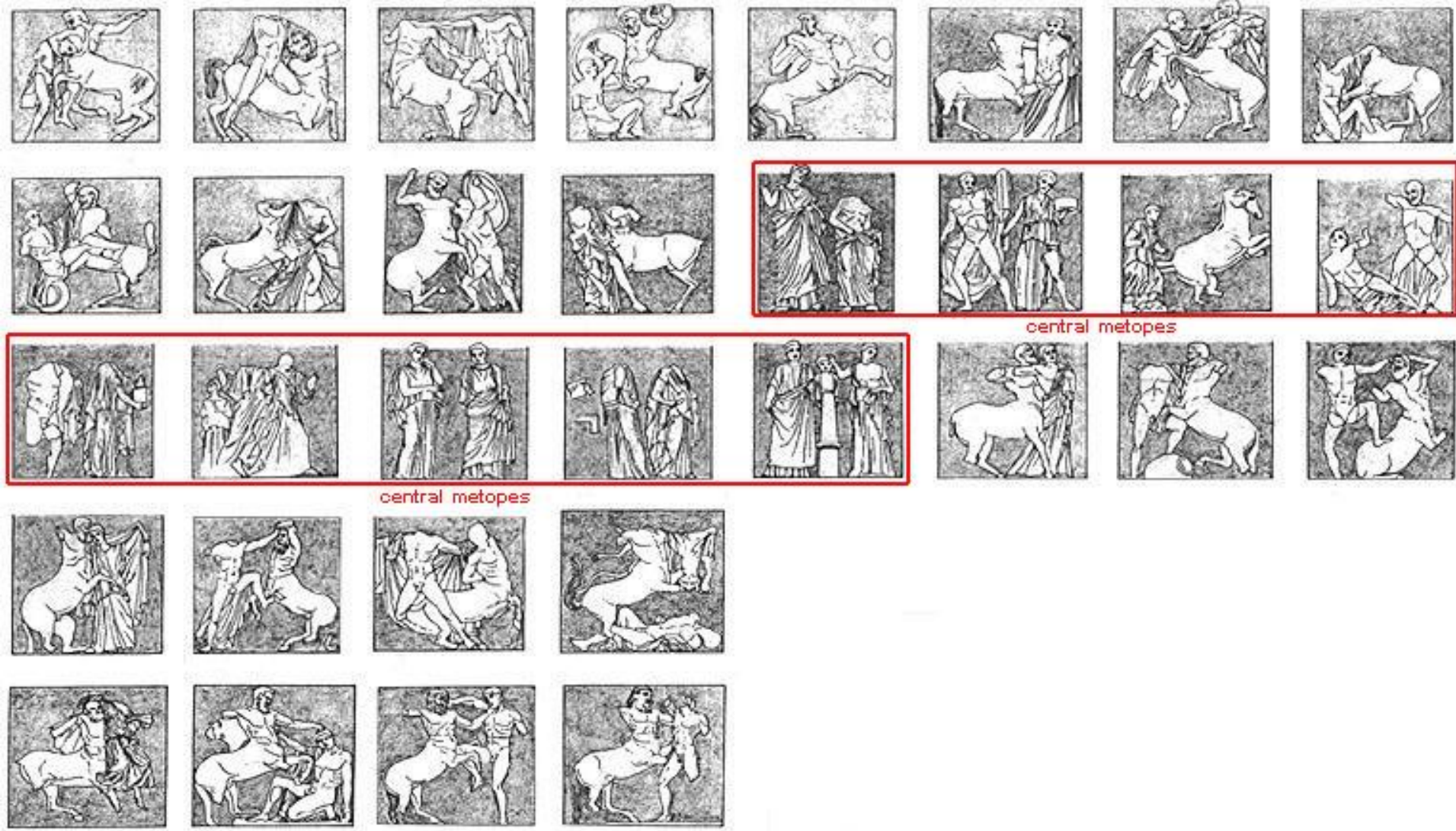


FRONTÓN ESTE

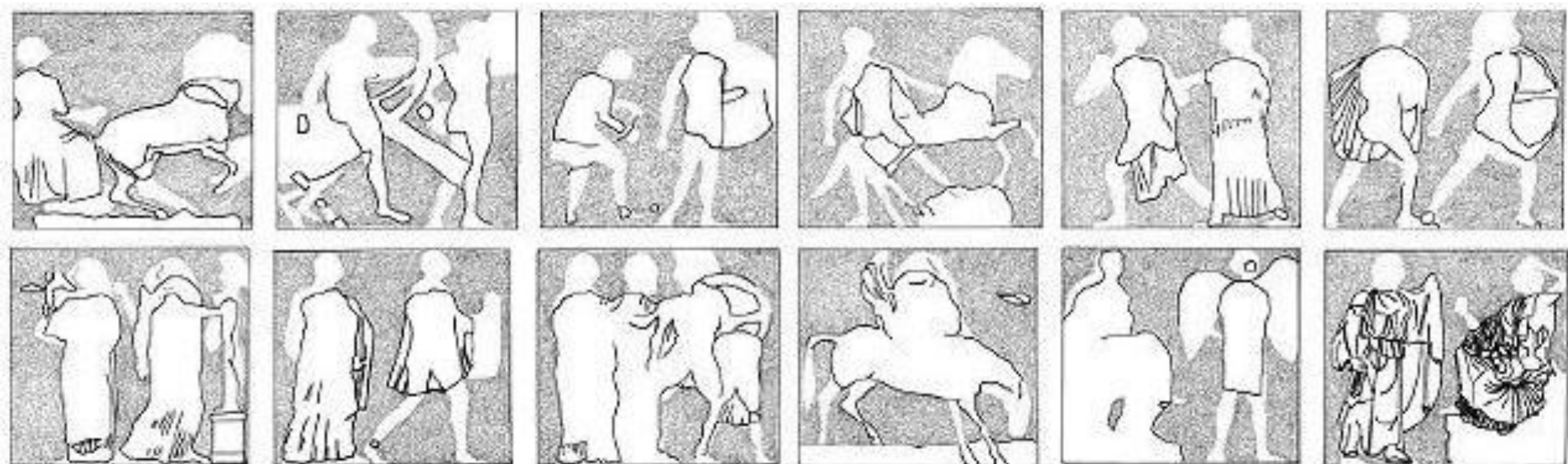




METOPAS: CENTAUROS Y LAPITAS



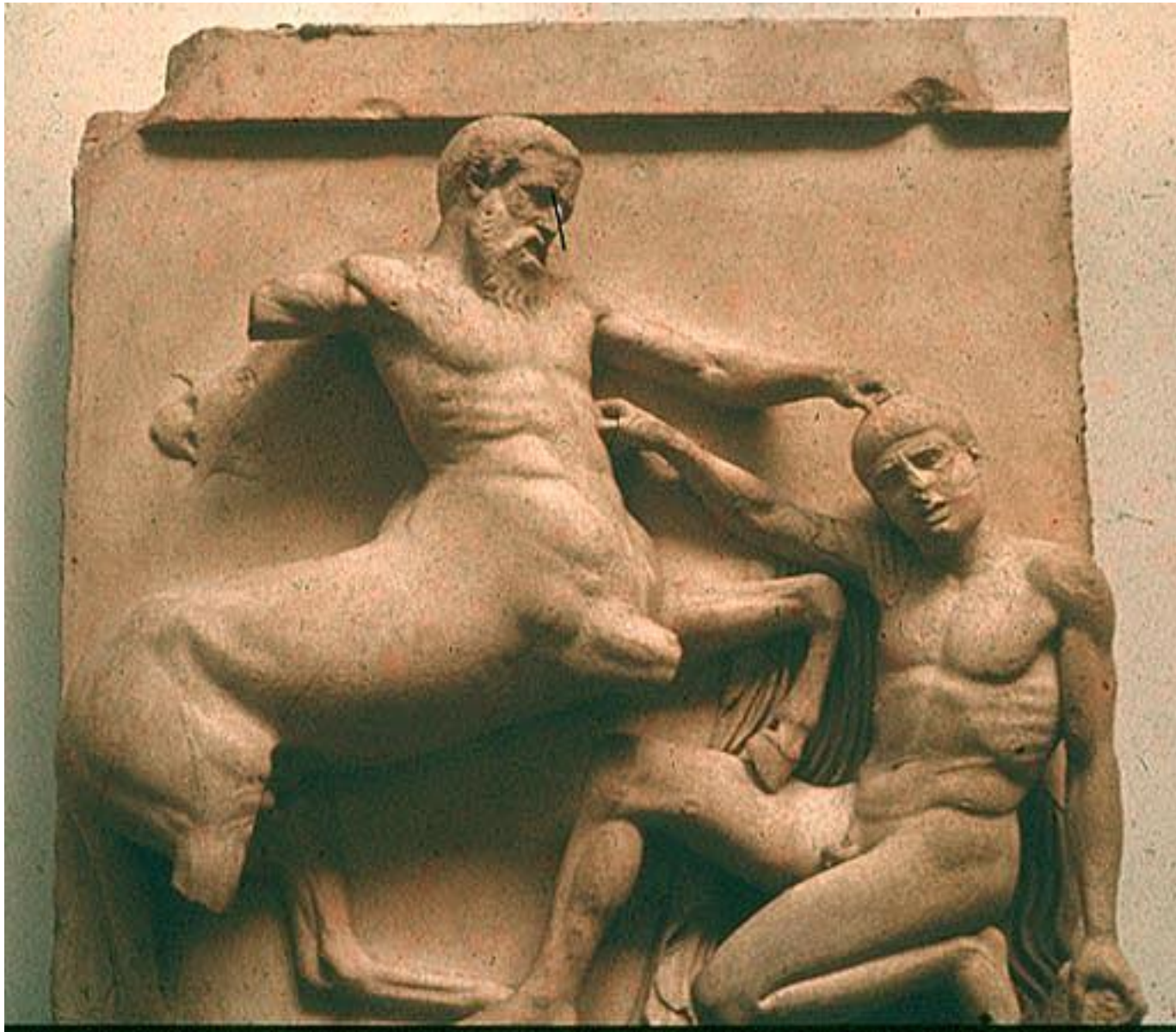
METOPAS: GIGANTOMAQUIA



Athena

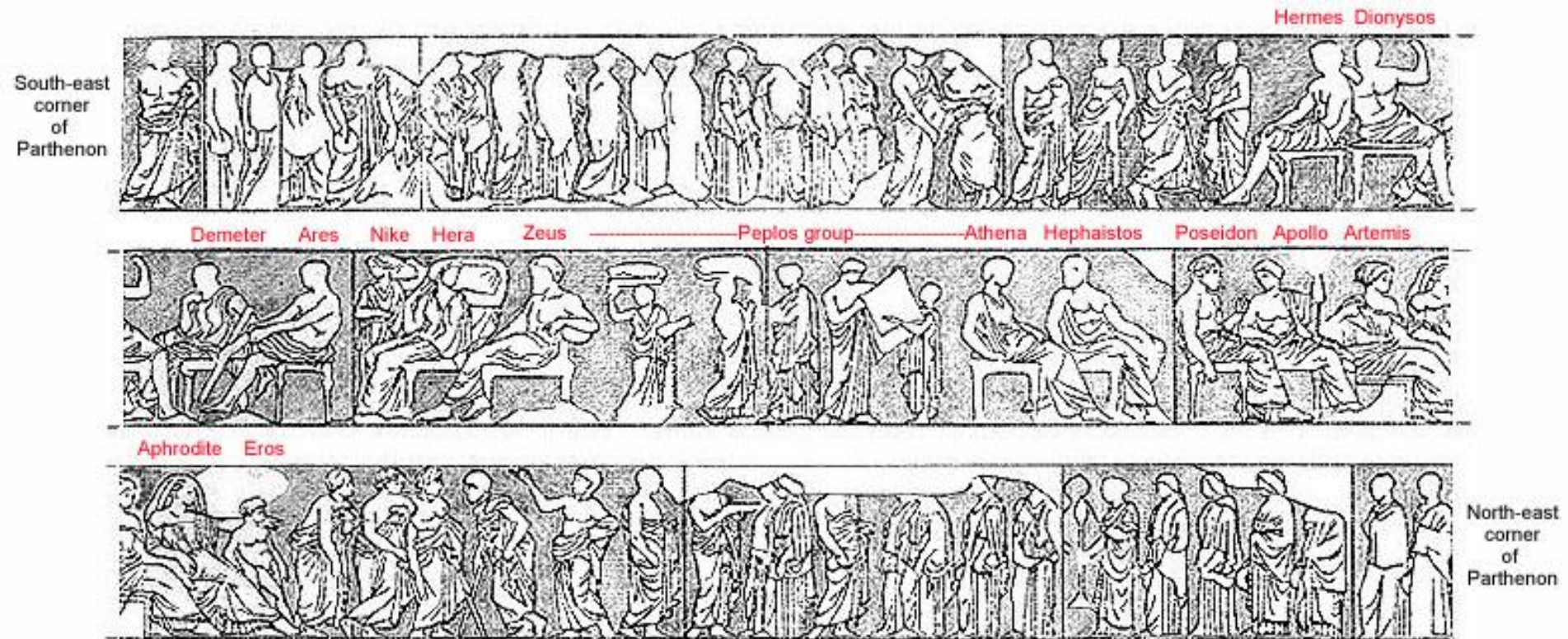
Hera?



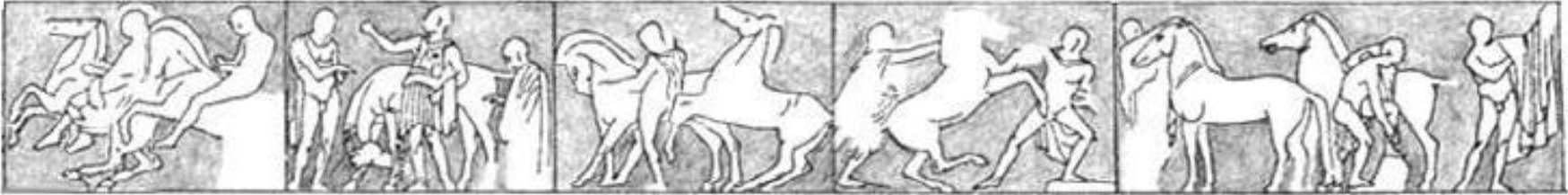




FRISO DE LAS PANATENEAS

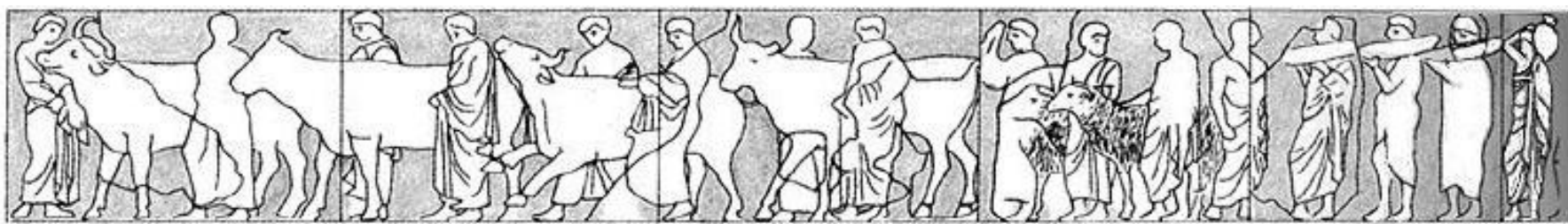


North-west
corner of
Parthenon



South-west
corner of
Parthenon

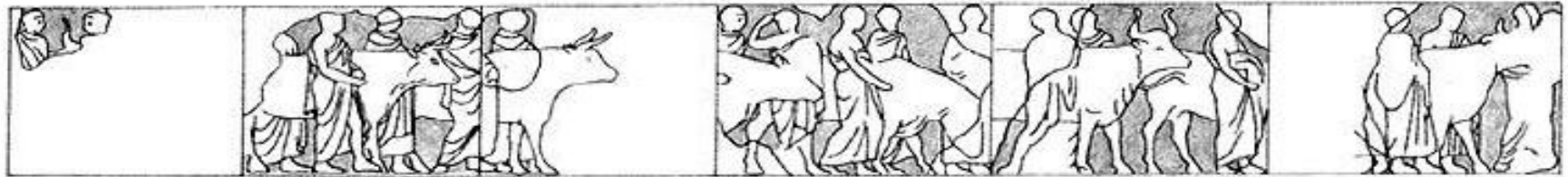
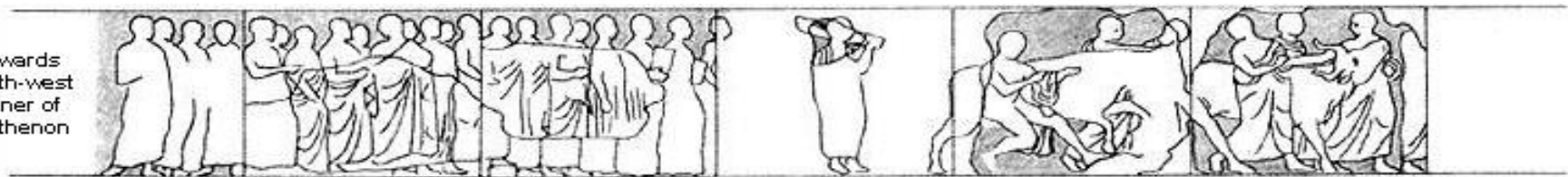
North-east
corner of
Parthenon



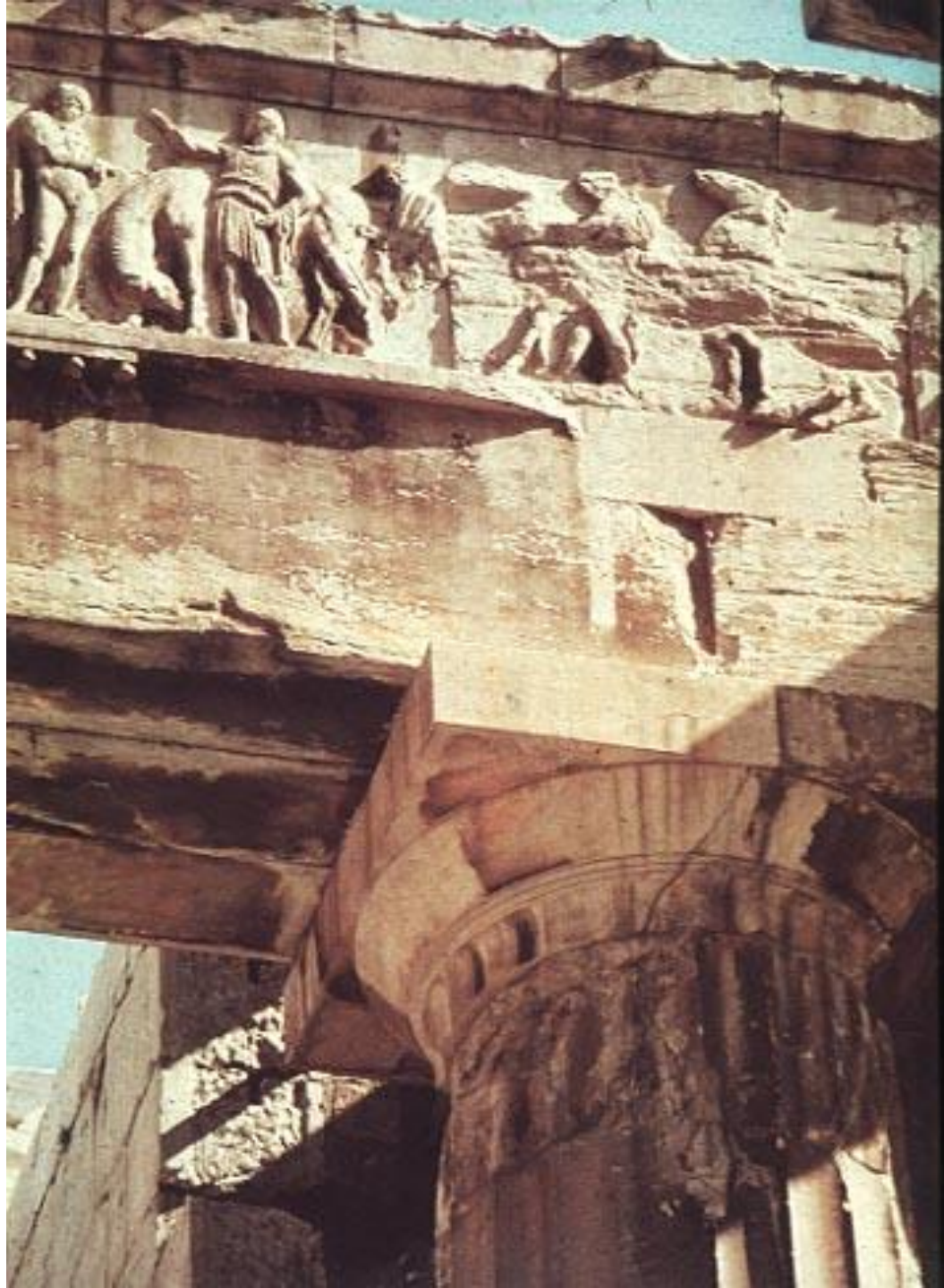
Centre-north
of frieze



Towards
South-west
corner of
Parthenon



South-east
corner of
Parthenon



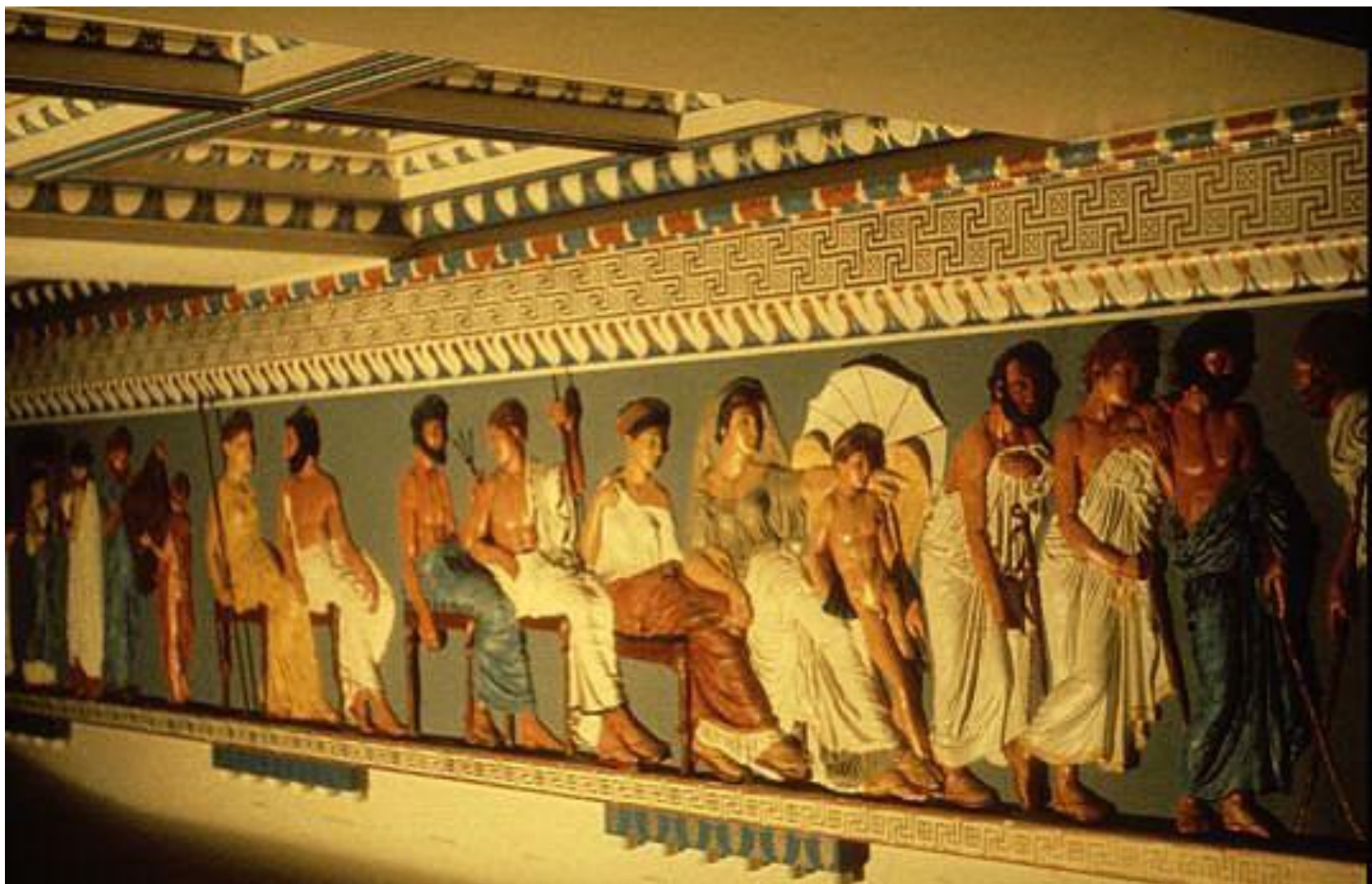








IDEM: RECONSTRUCCIÓN



EL SIGLO IV

PRAXÍTELES



APOLO SAURÓCTONOS



HERMES CON EL NIÑO DIONISOS

IDEM-VENUS DE ARLES

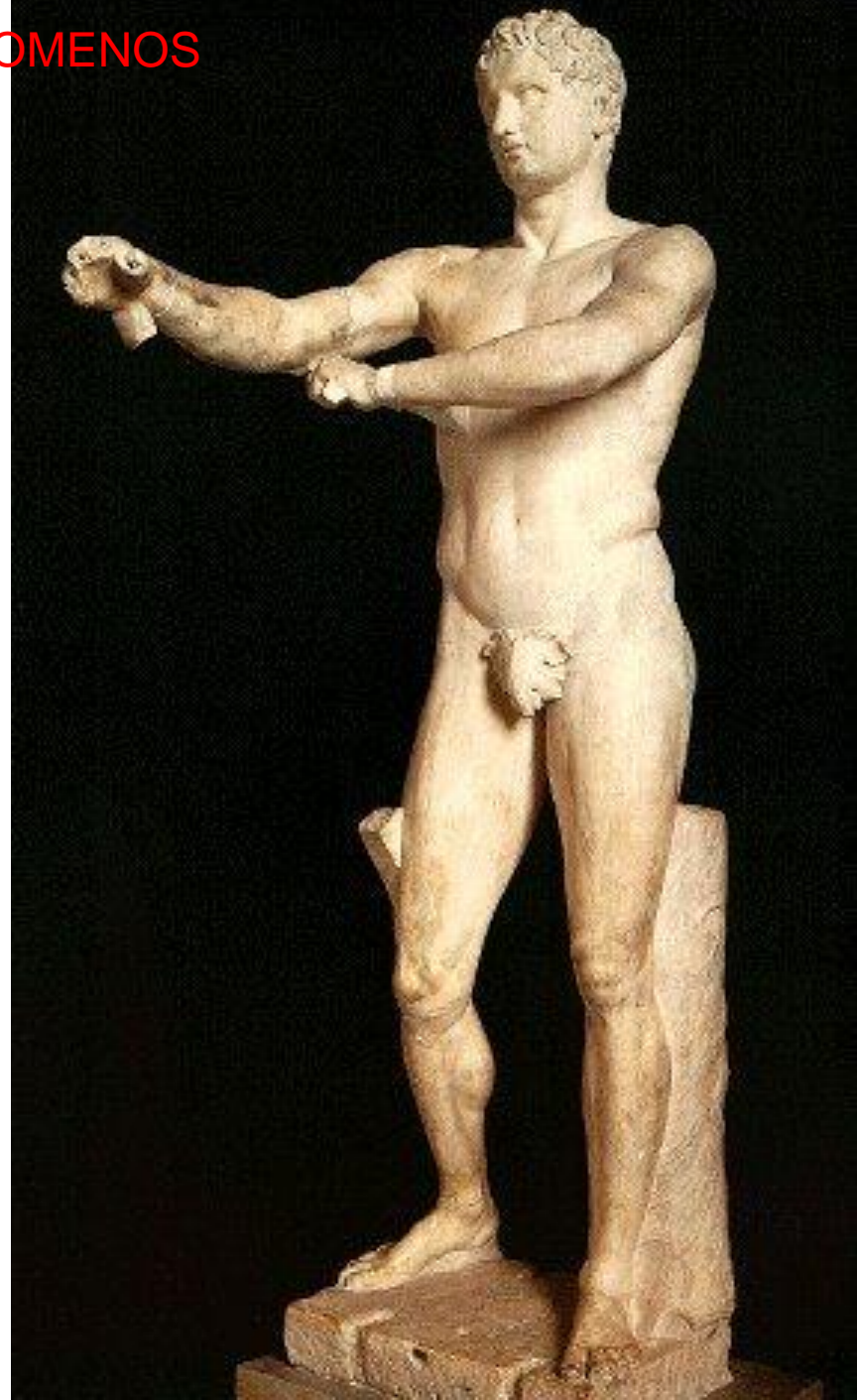




IDEM-VENUS DE CNIDO



LISIPO-APOXIOMENOS



EL CANON DE LISIPO



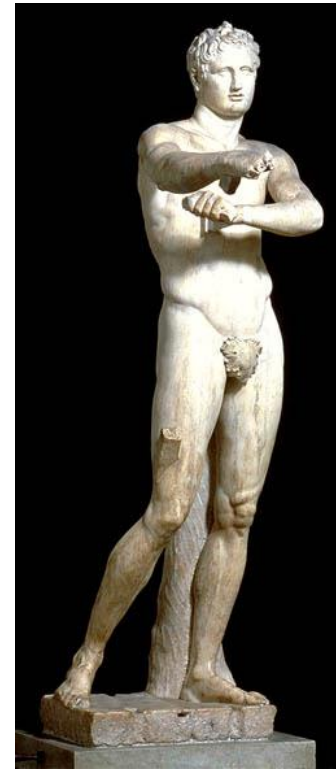
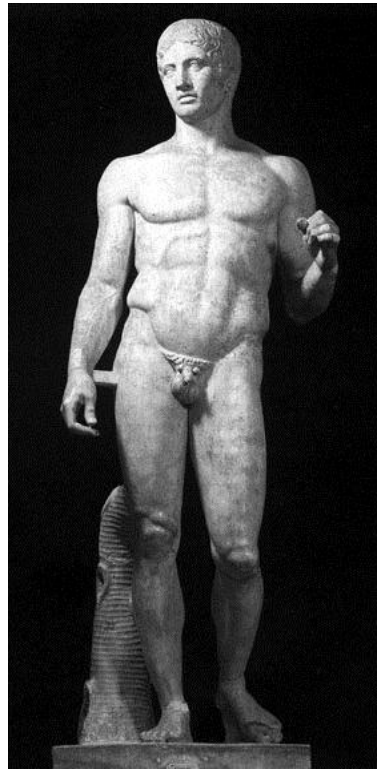
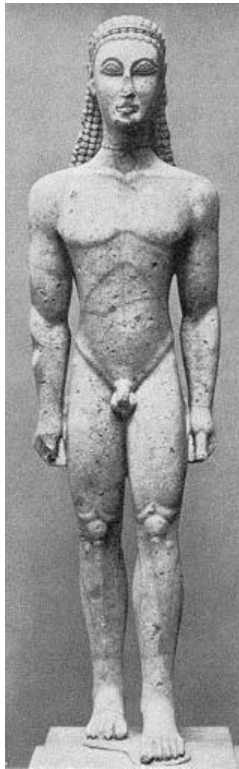
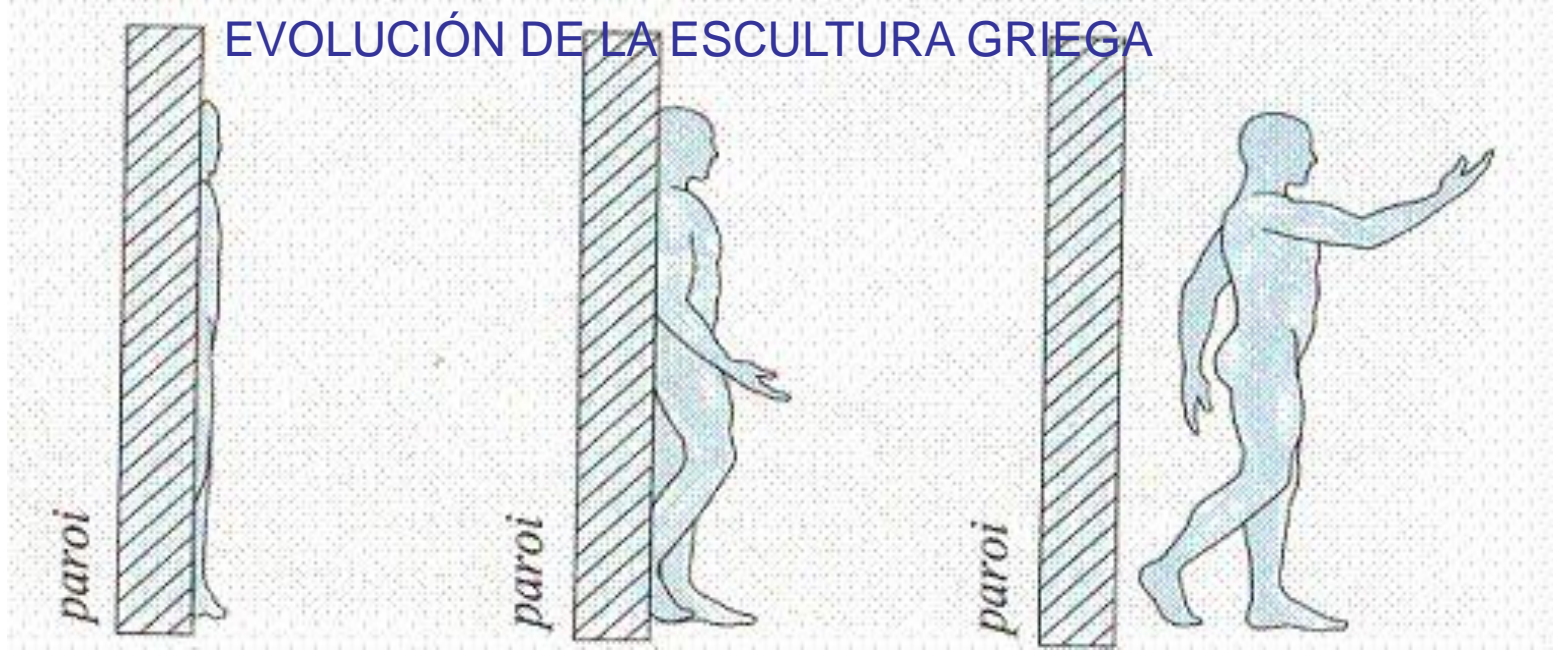
LISIPO-ARES LUDOVISI



LISIPO-HERCULES FARNESIO



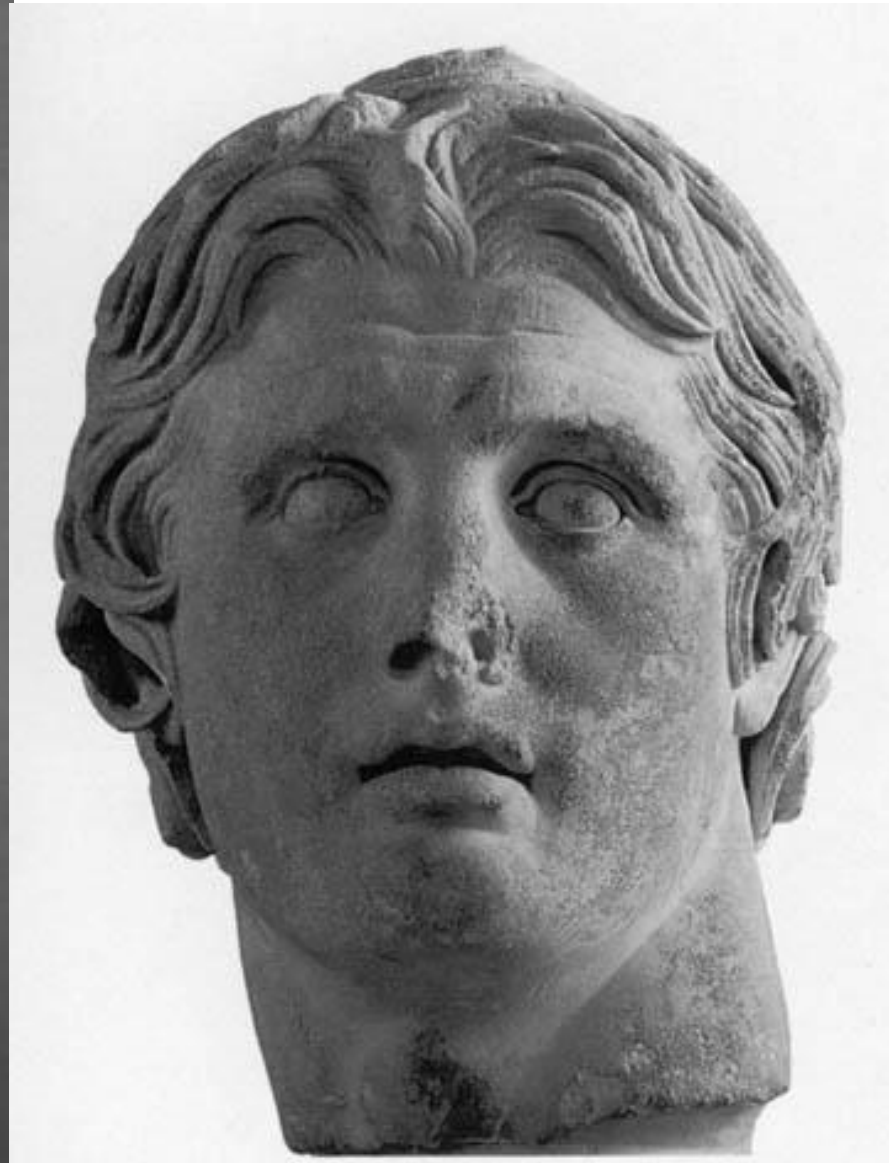
EVOLUCIÓN DE LA ESCULTURA GRIEGA





MÉNADE

62



ALEJANDRO MAGNO

PERÍODO HELENÍSTICO

- EL NEOCLASICISMO ATENIENSE
 - LAS ESCUELAS LOCALES
 - EL GÉNERO

APOLO BELVEDERE



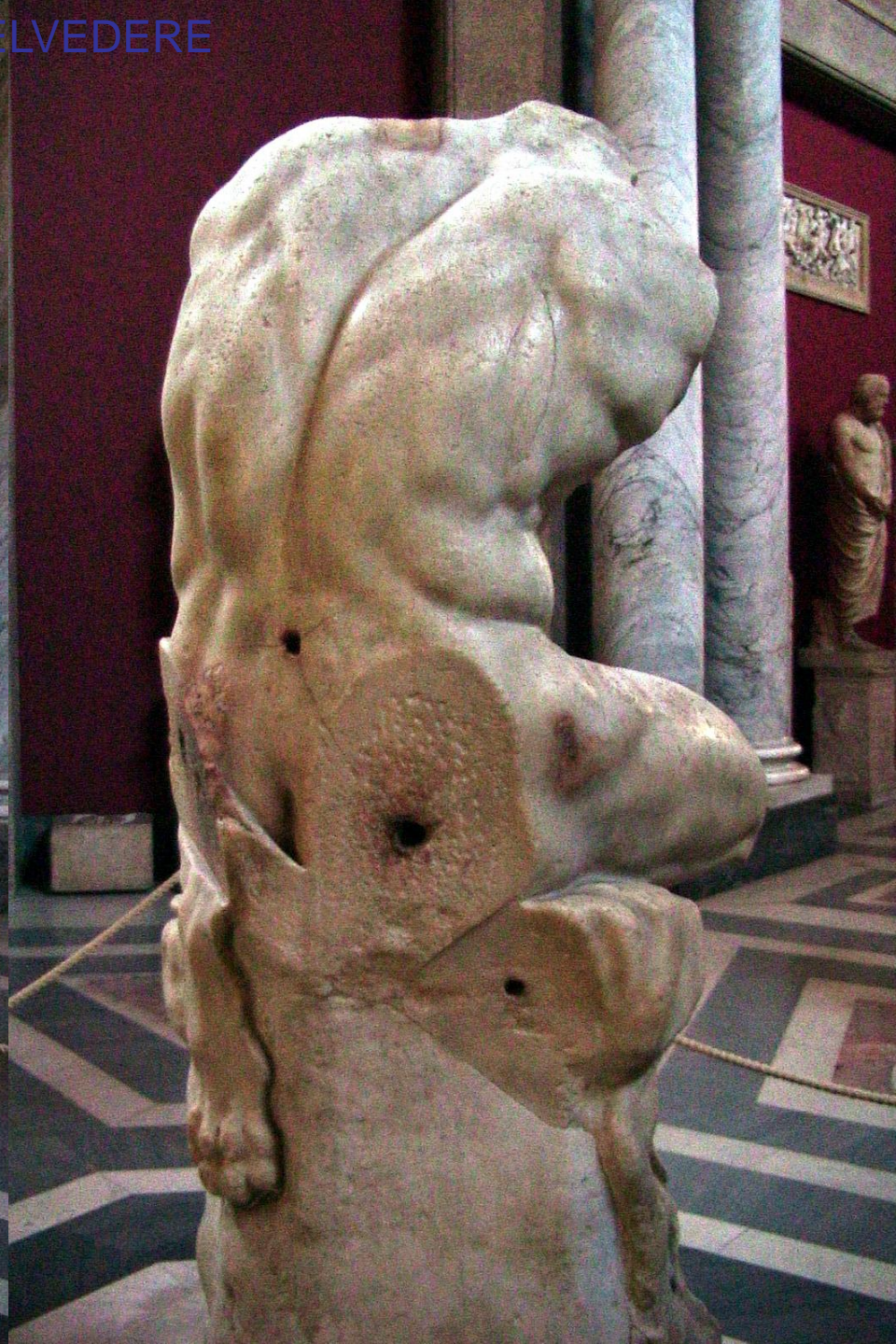
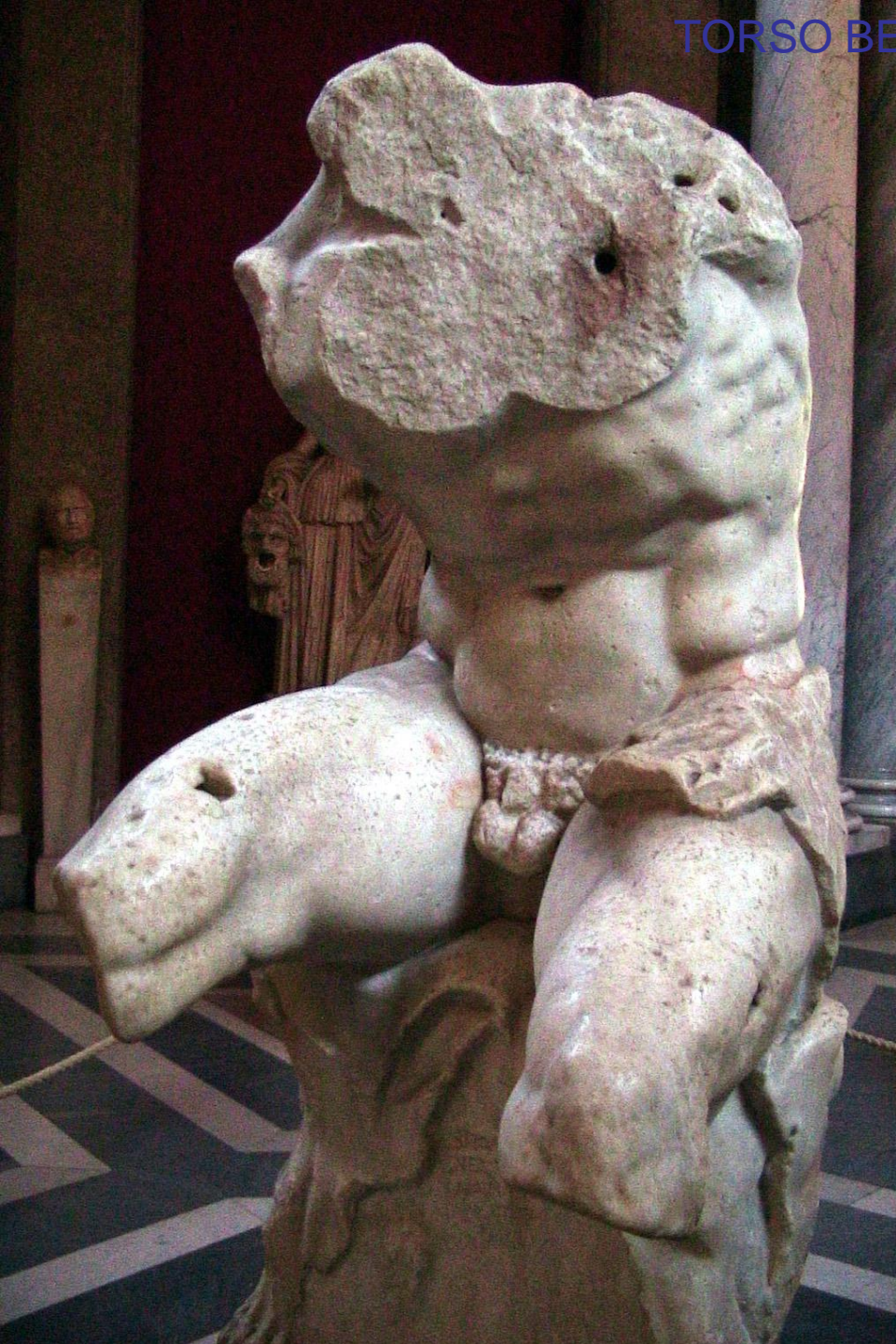
VENUS DE MILO



BOXEADOR SENTADO



TORSO BELVEDERE



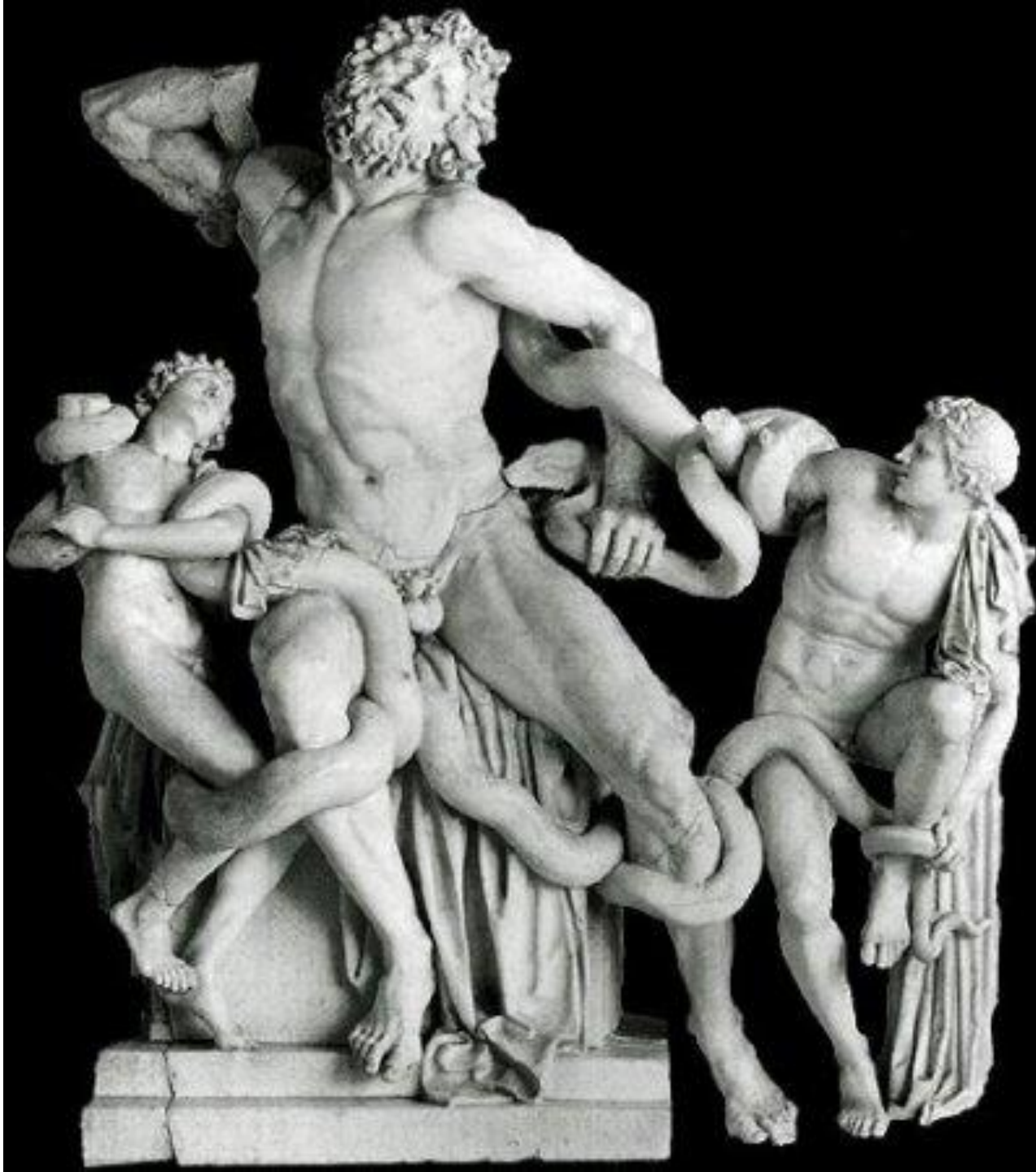
ALEGORÍA DEL NILO (ALEJANDRÍA)



FAUNO BARBERINI
(RODAS)



LAOCOONTE
(ESCUELA
DE RODAS)



VICTORIA DE SAMOTRACIA
(RODAS)





GALOS HERIDOS (ESCUELA DE PÉRGAMO)





ALTAR DE ZEUS EN PÉRGAMO





RELIEVES DEL MAUSOLEO DE HALICARNASO





VIEJA BORRACHA

EL NIÑO DE LA OCA



TANAGRAS

