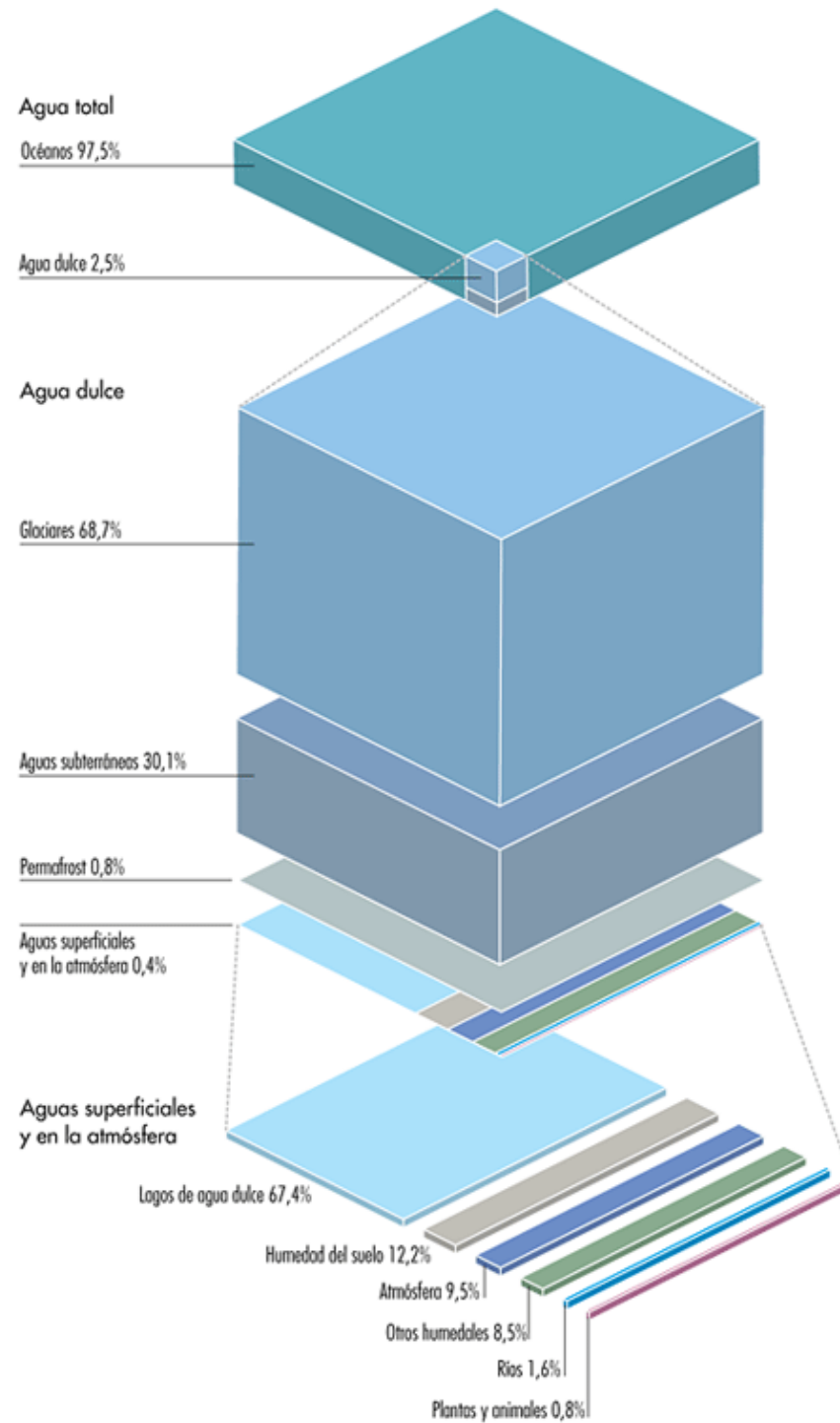
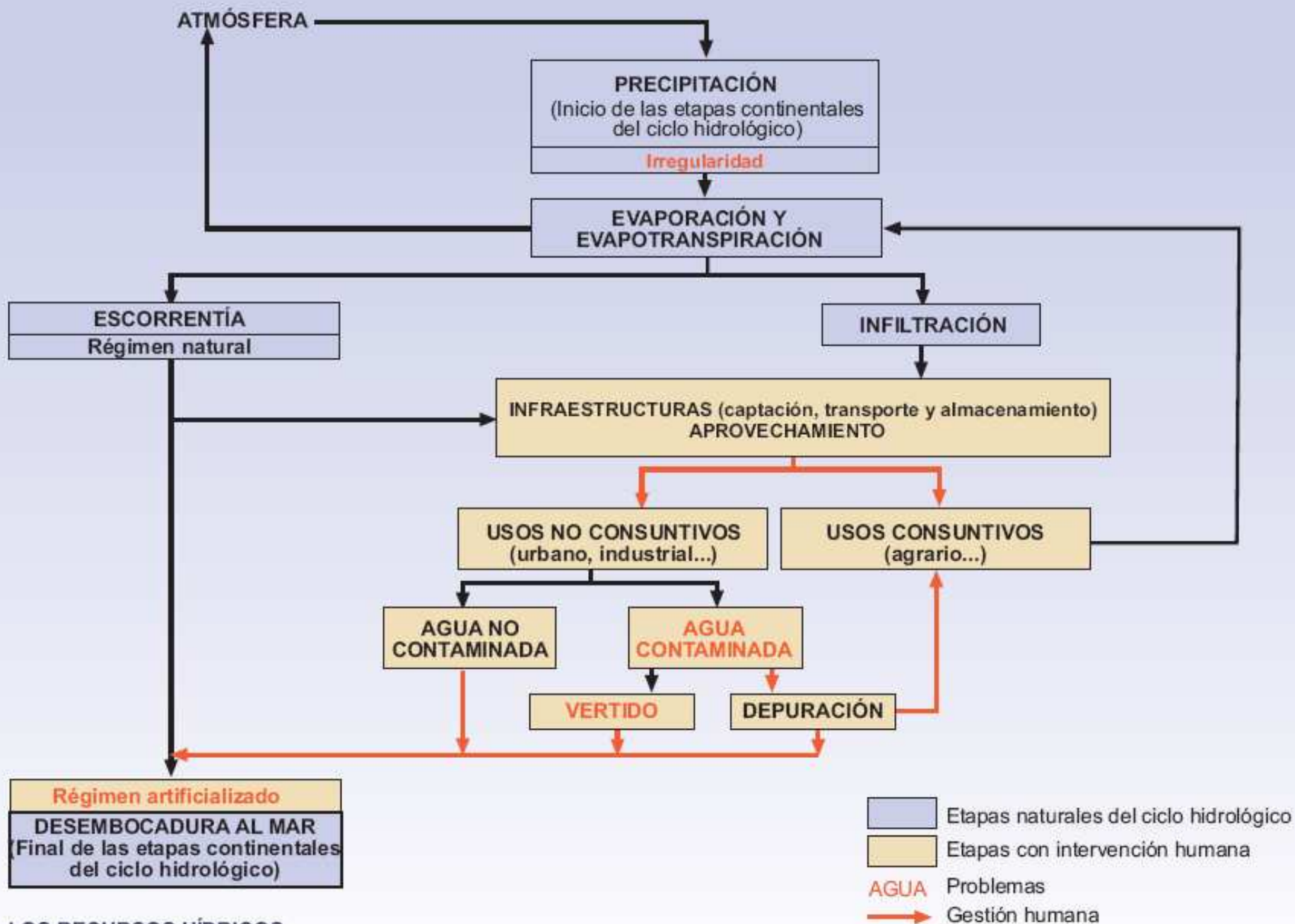


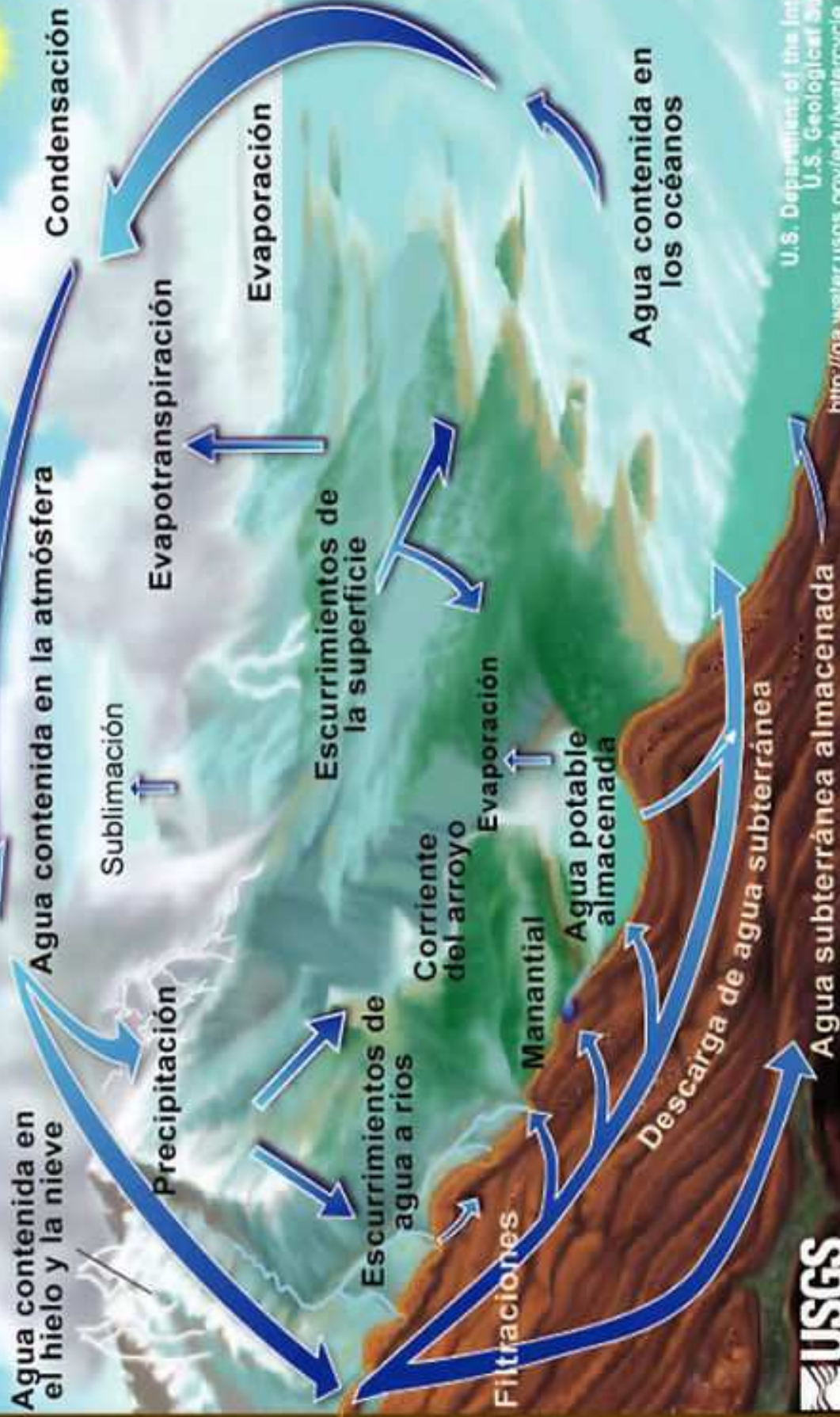
DISTRIBUCIÓN DEL AGUA DEL PLANETA



RECURSOS HÍDRICOS

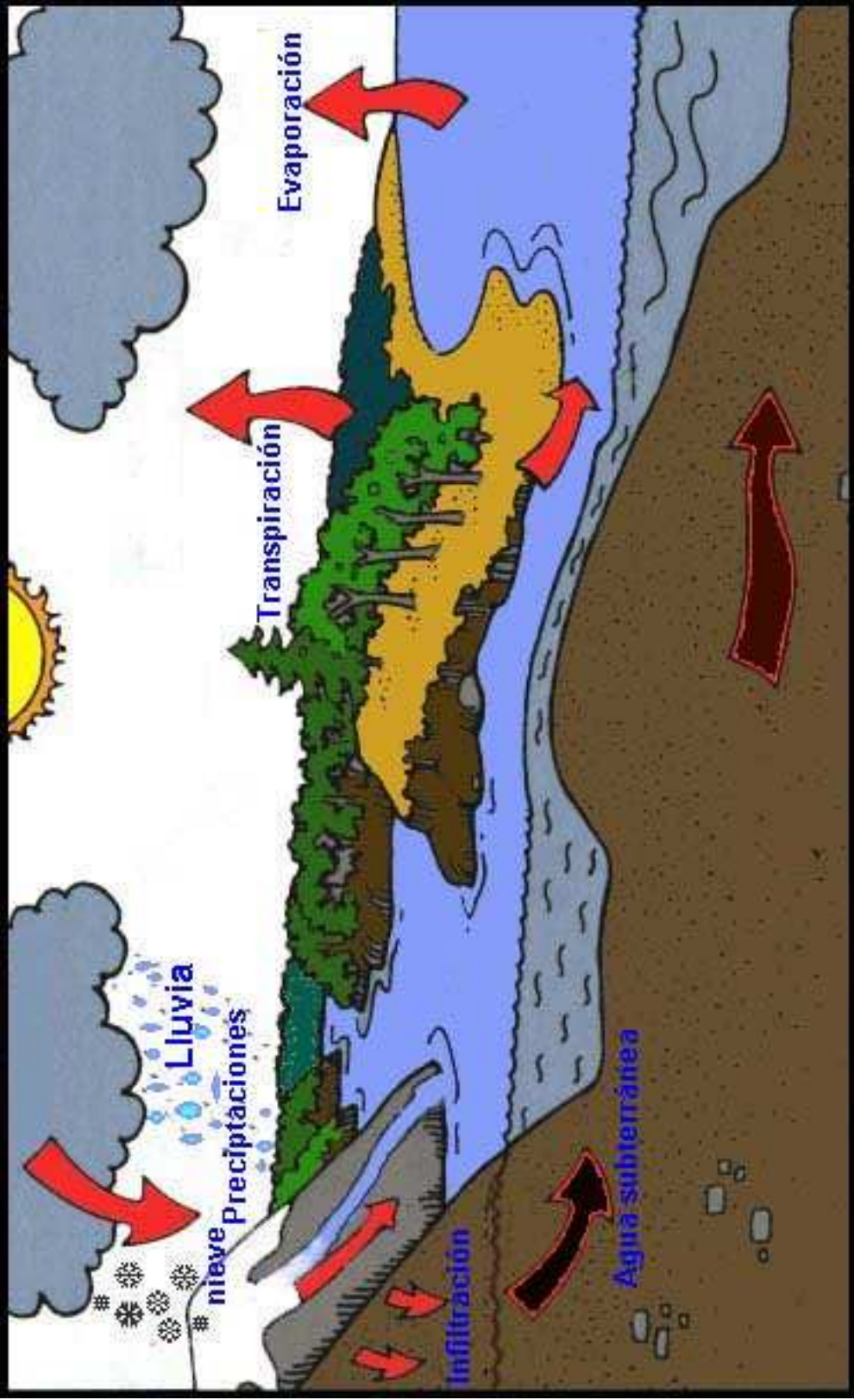


El Ciclo del Agua

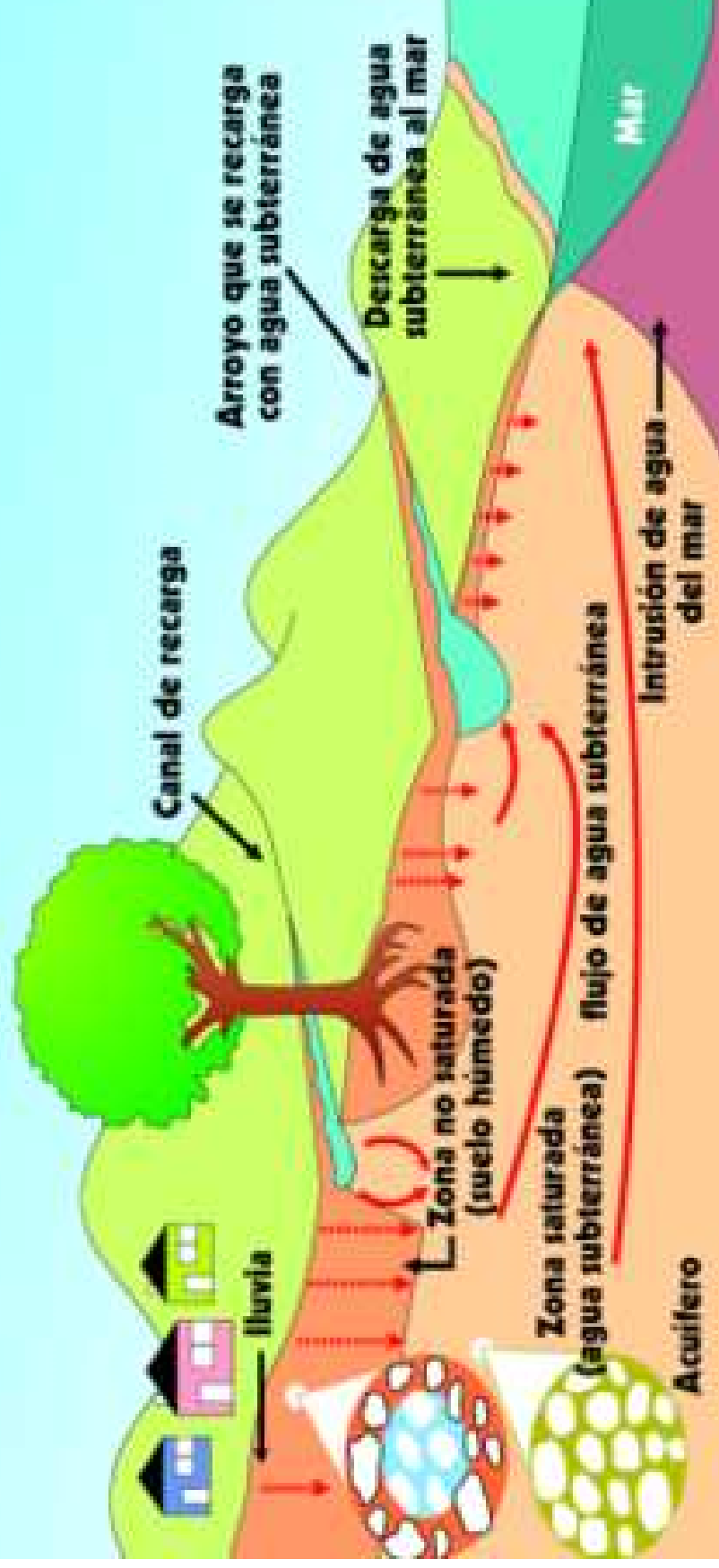


U.S. Department of the Interior
U.S. Geological Survey
<http://ga.water.usgs.gov/edu/watercycle.html>





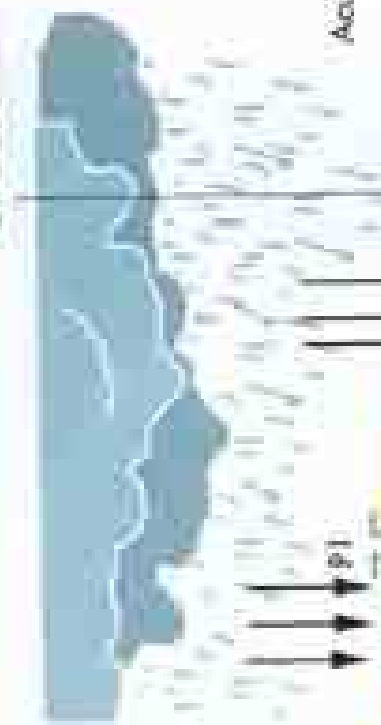
Flujo del agua subterránea



- Rocas impermeables
- Areniscas o acuíferos permeables

- ⋯ Nivel freático
- ⋮ Zonas de recarga

Zona de recarga



Acuífero libre



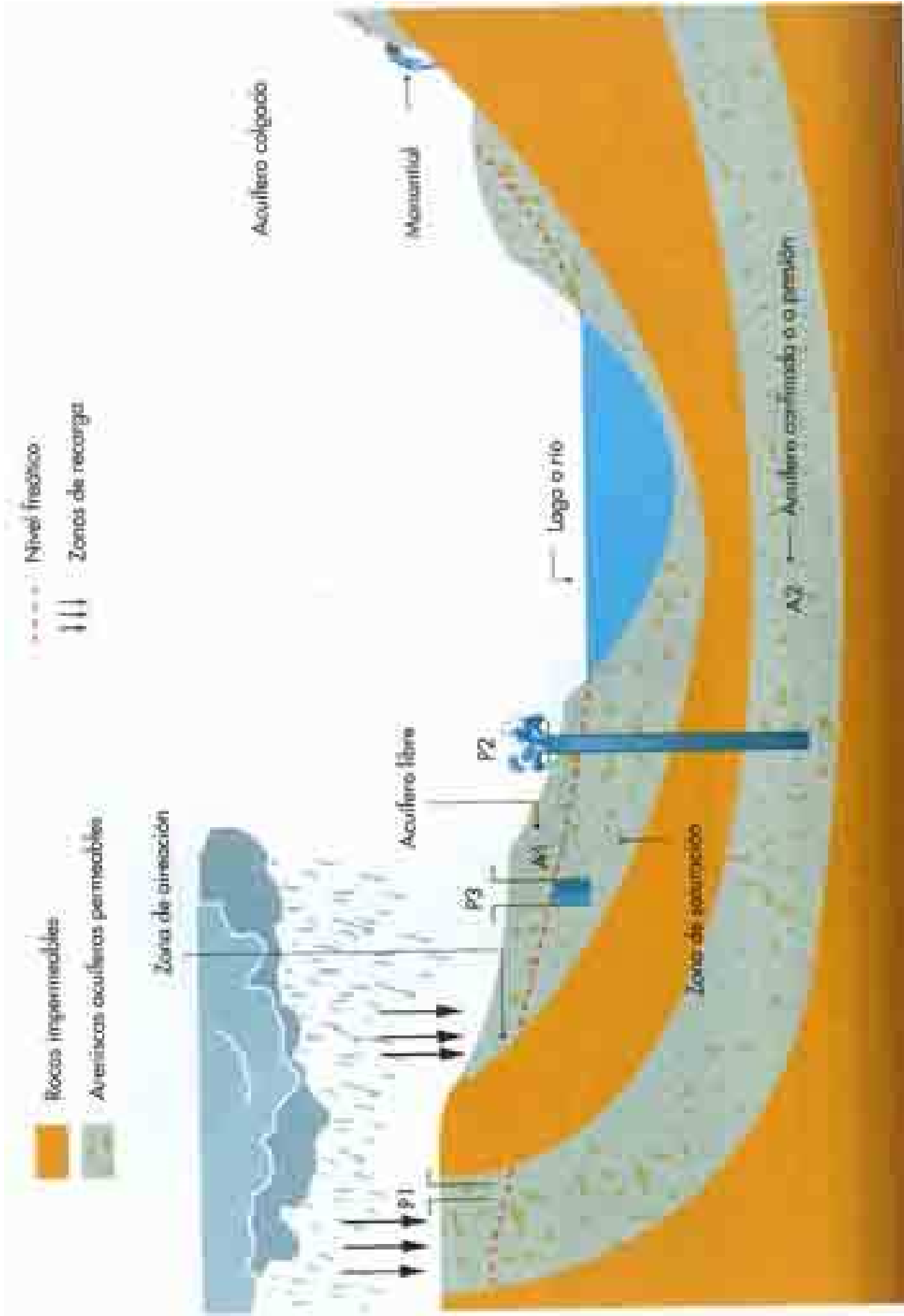
Zona de saturación

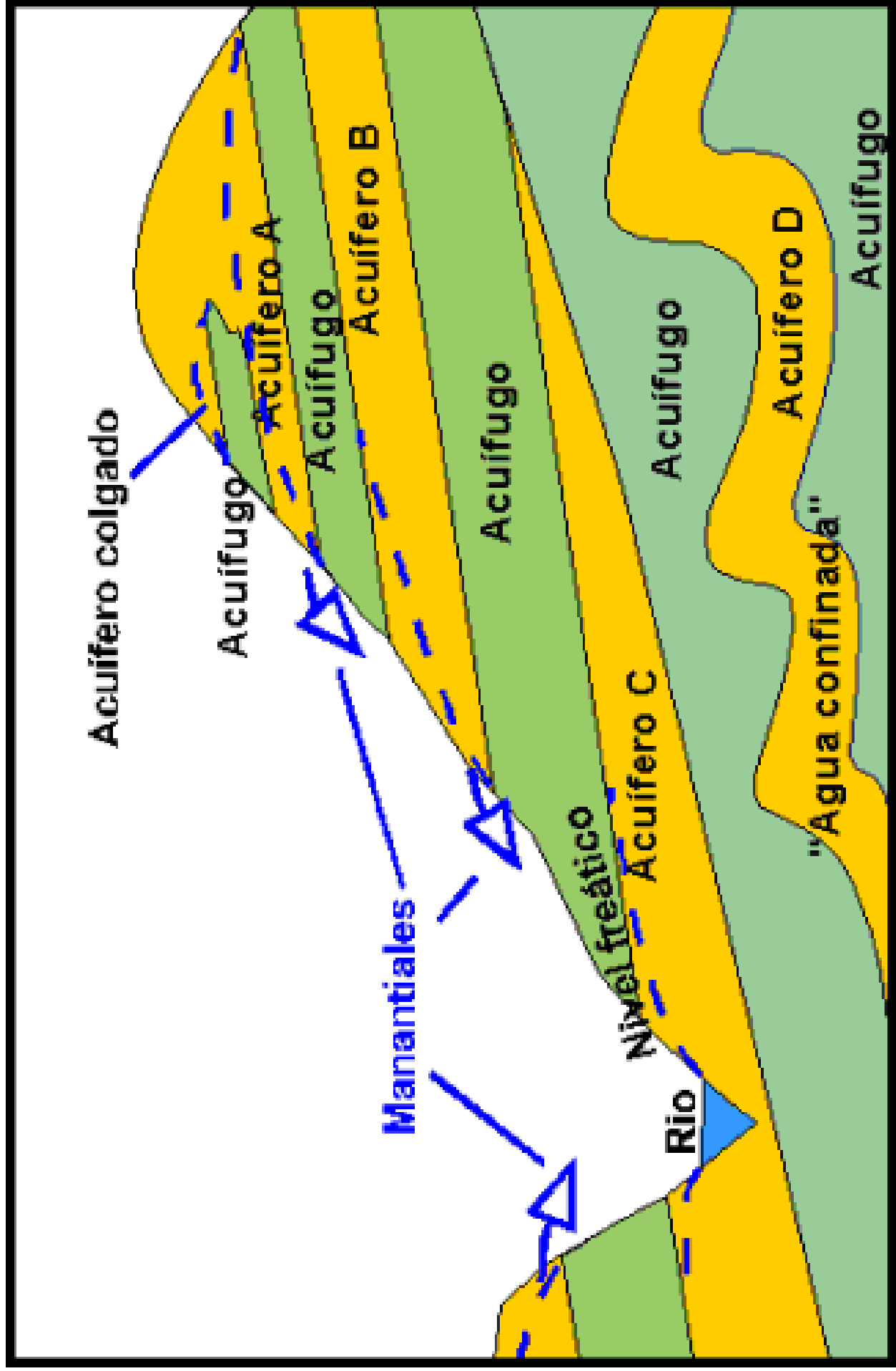
Acuífero cargado

Montaña

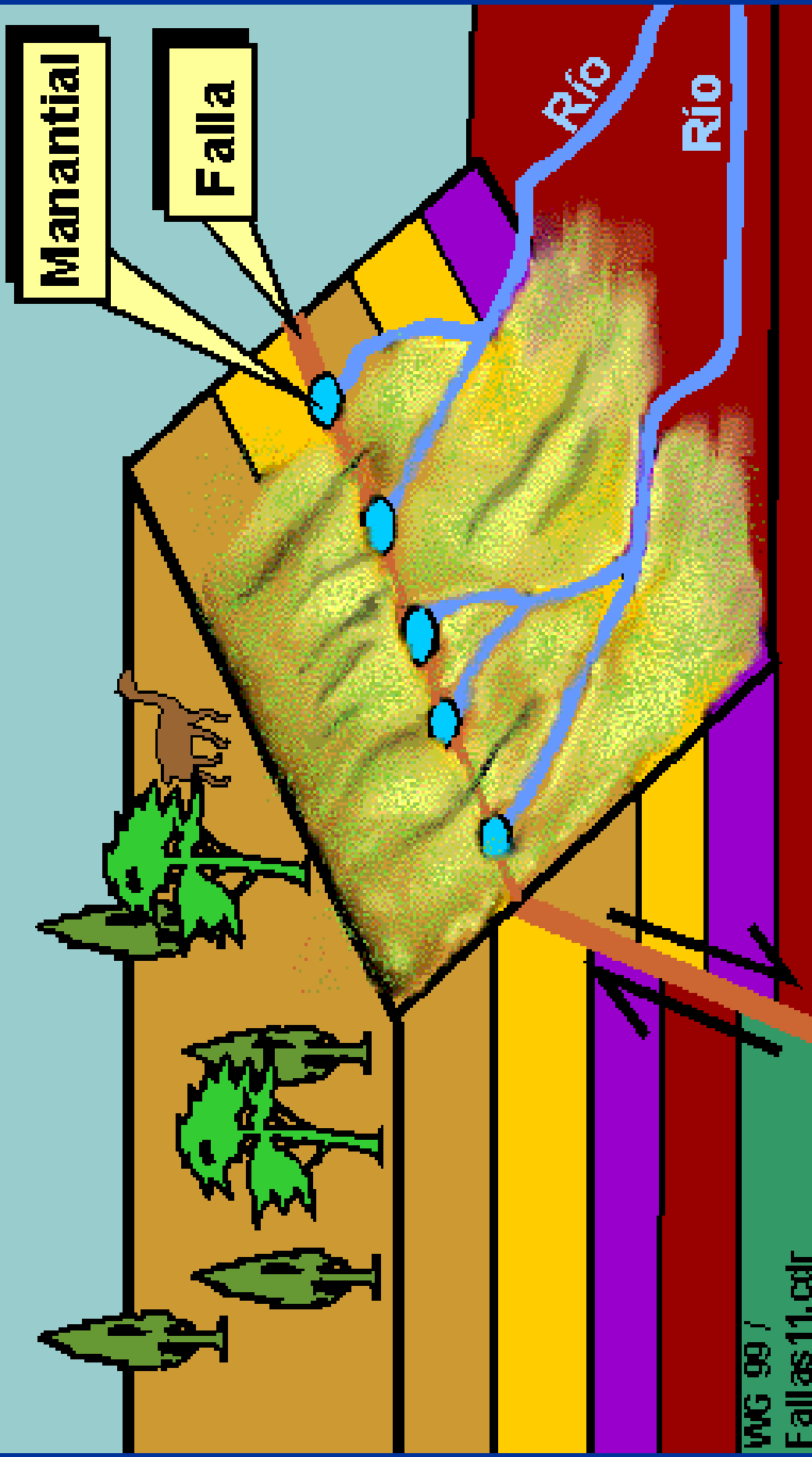
Lago o río

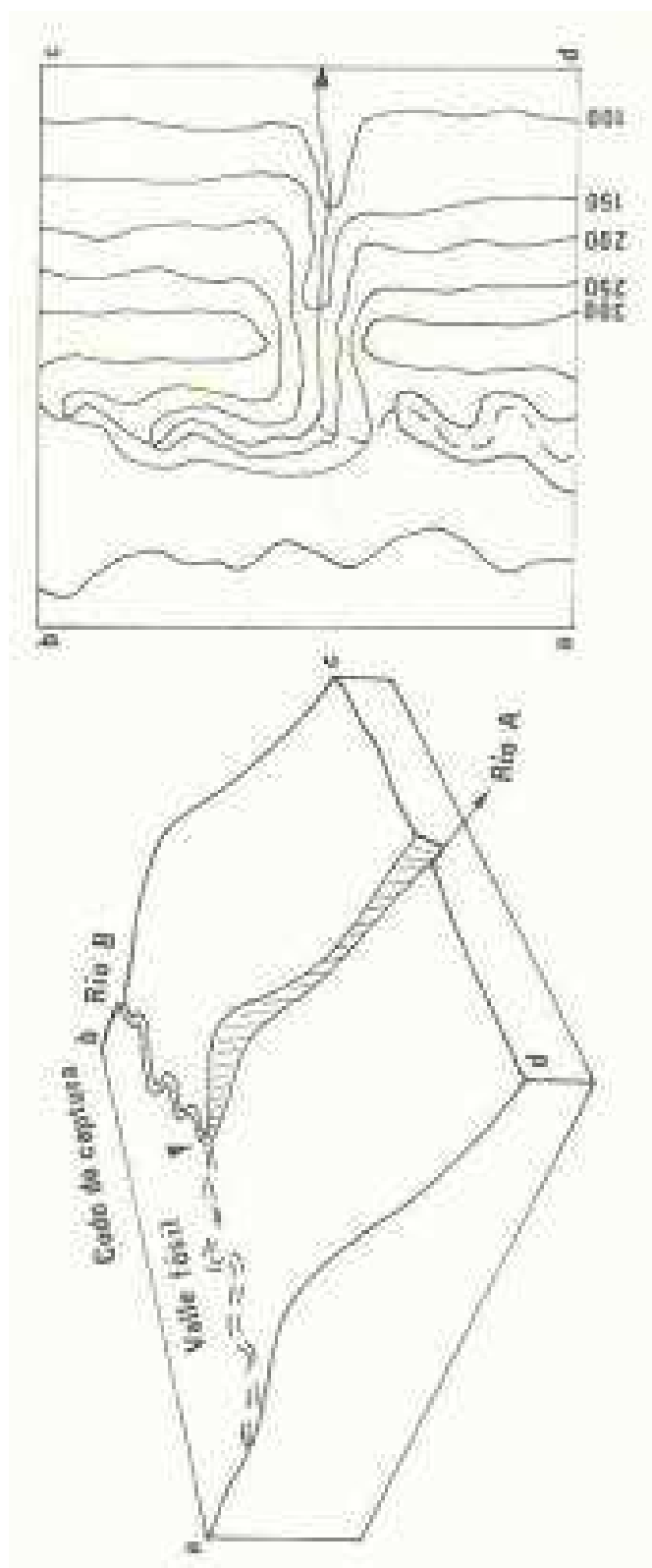
A2 — Acuífero confinado o presión



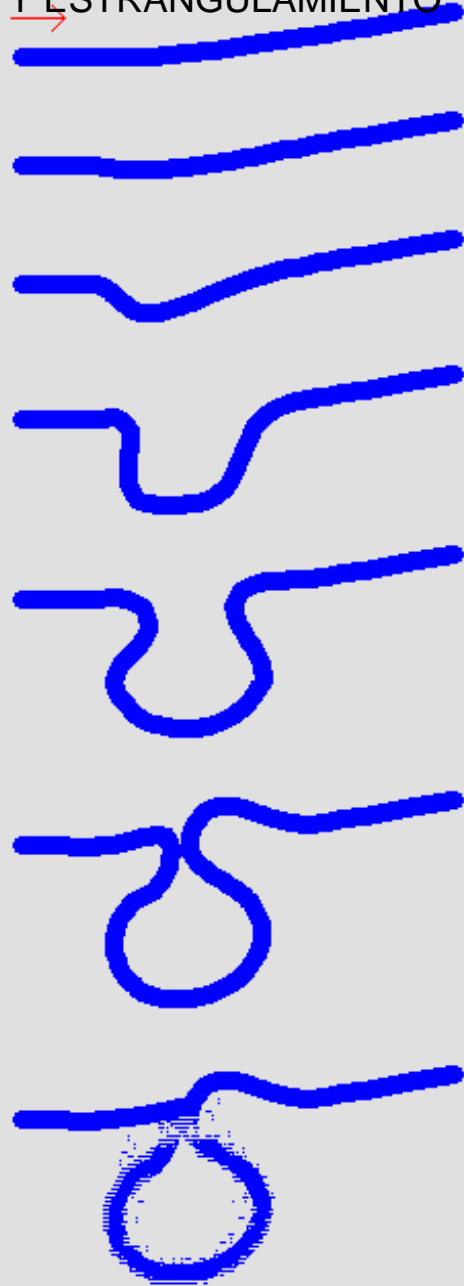


Manantiales y fallas tectónicas



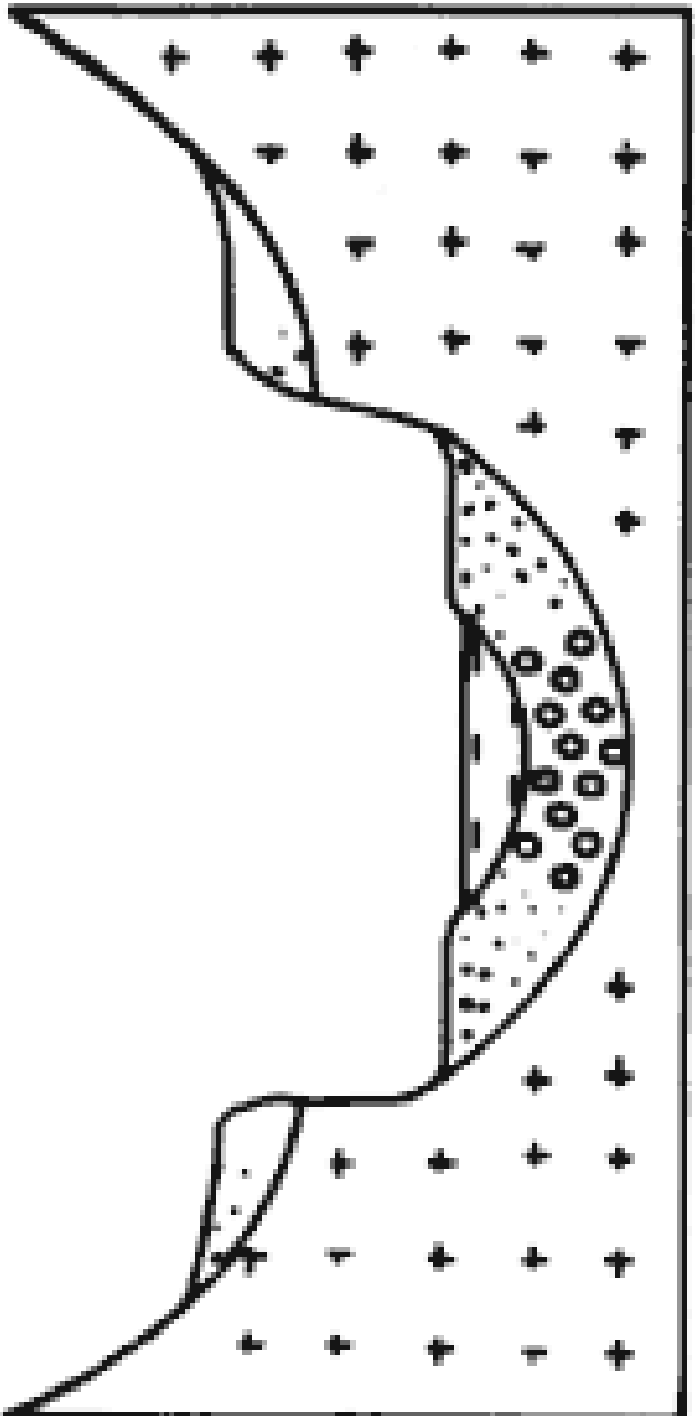
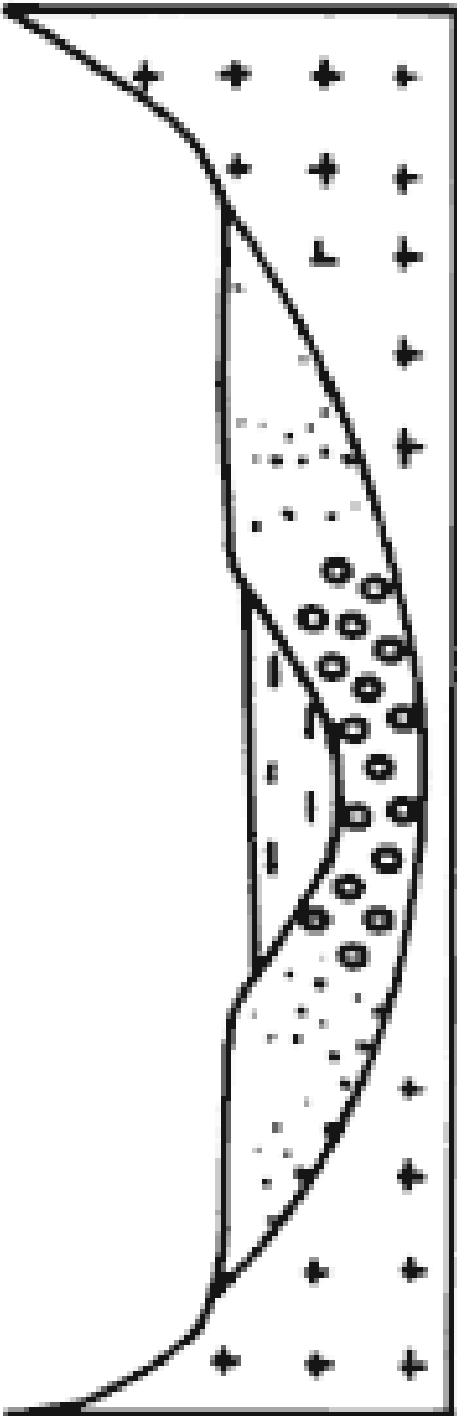
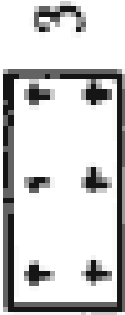
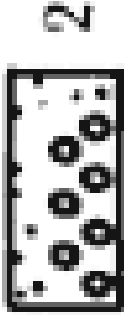
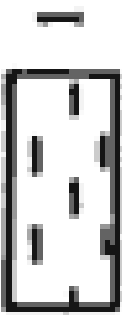


FORMACIÓN DE UN MEANDRO
Y ESTRANGULAMIENTO



MEANDROS

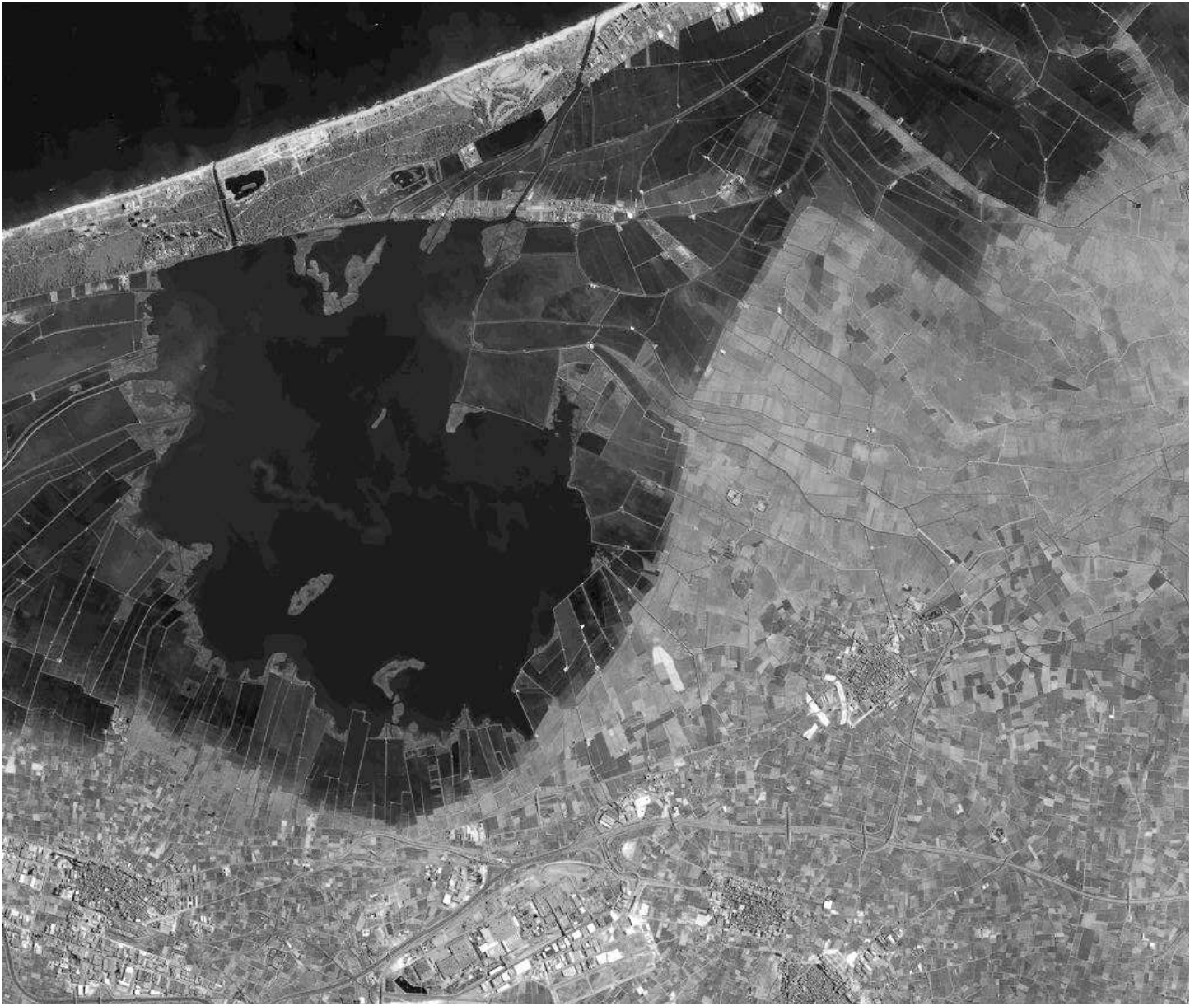




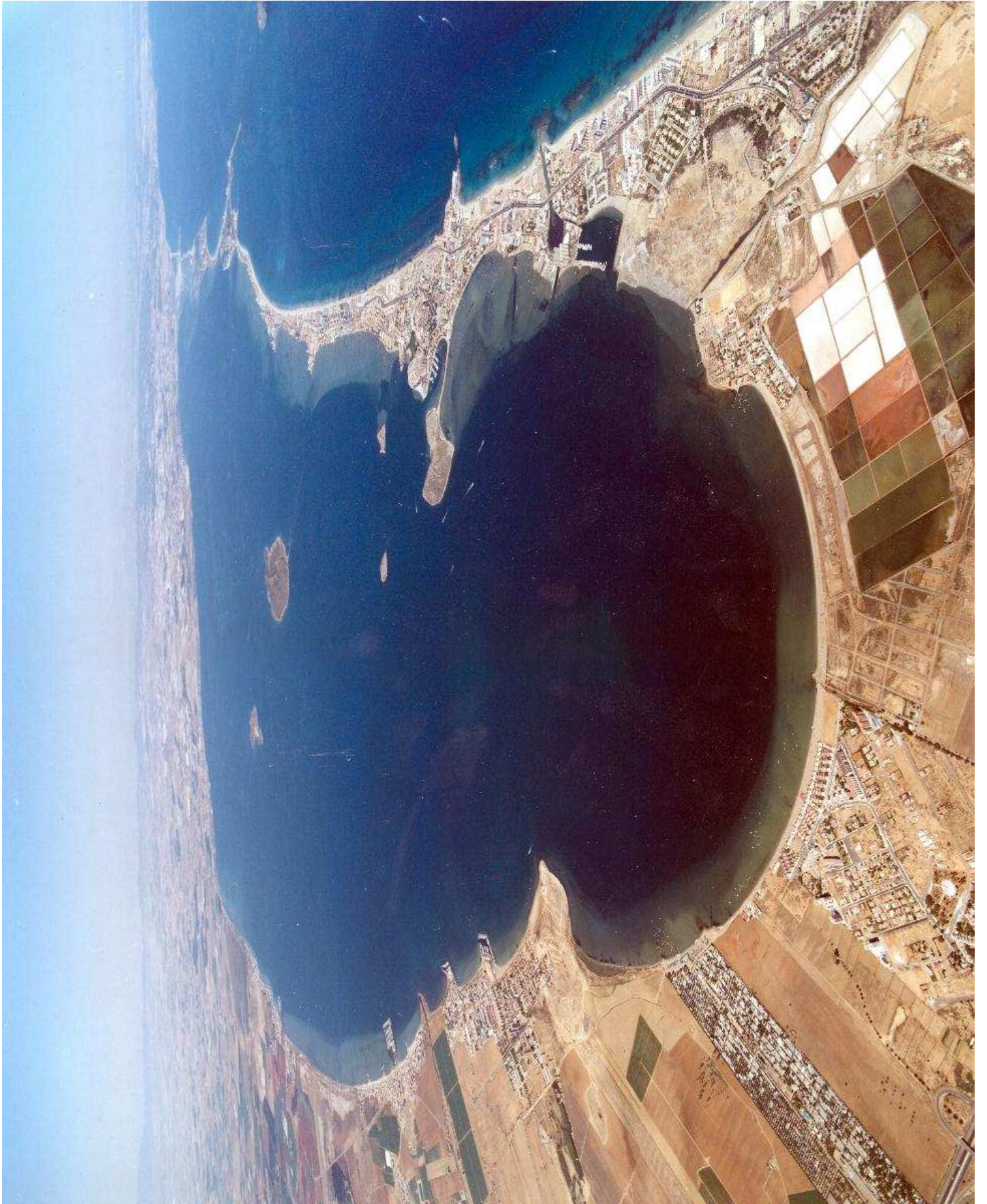
ALBUFERA



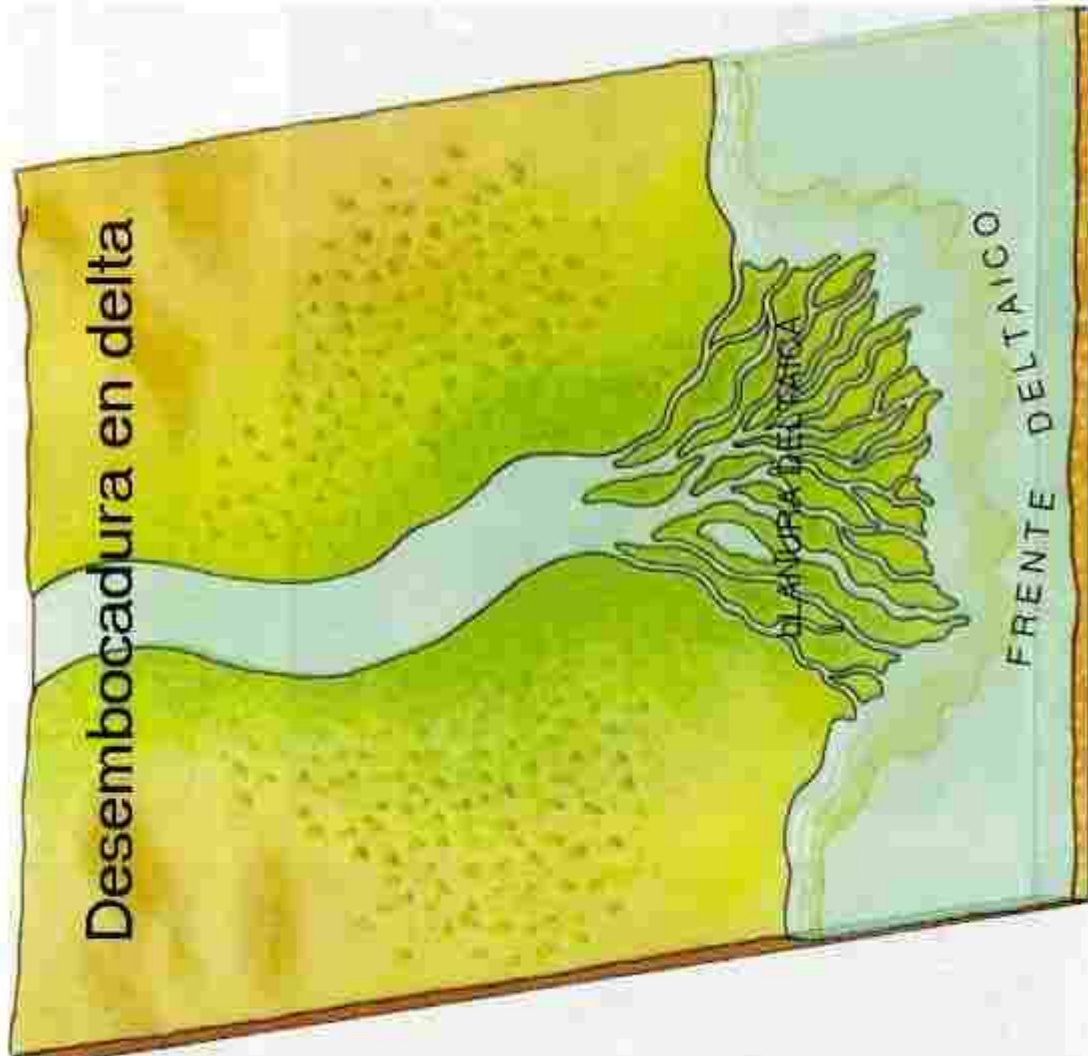


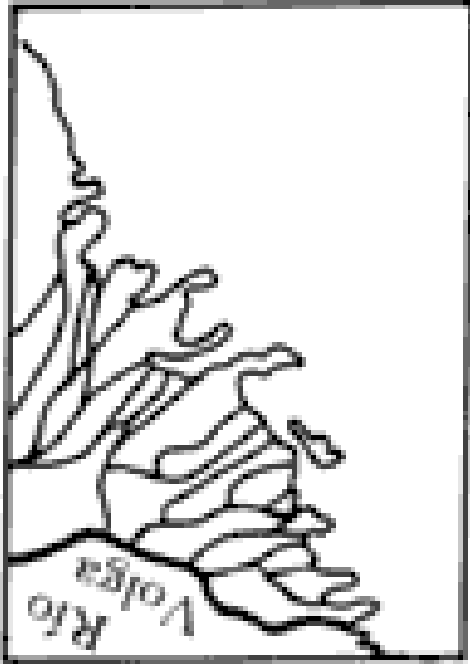




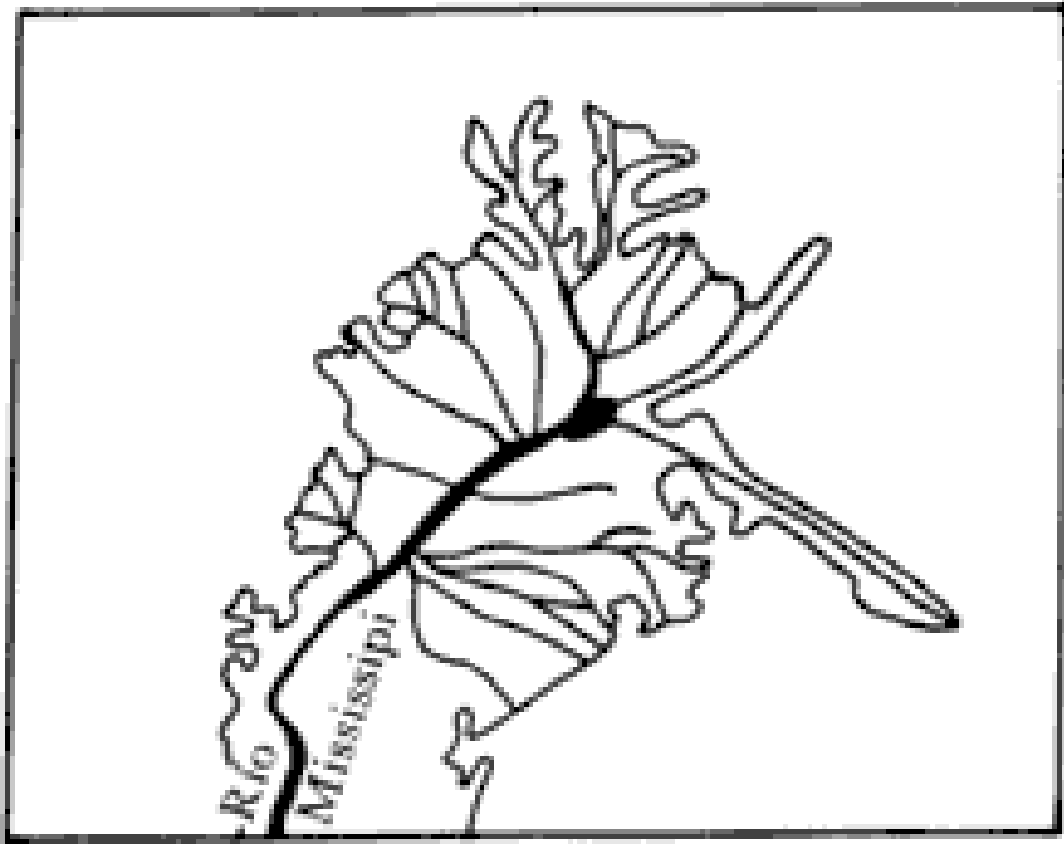


Desembocadura en delta

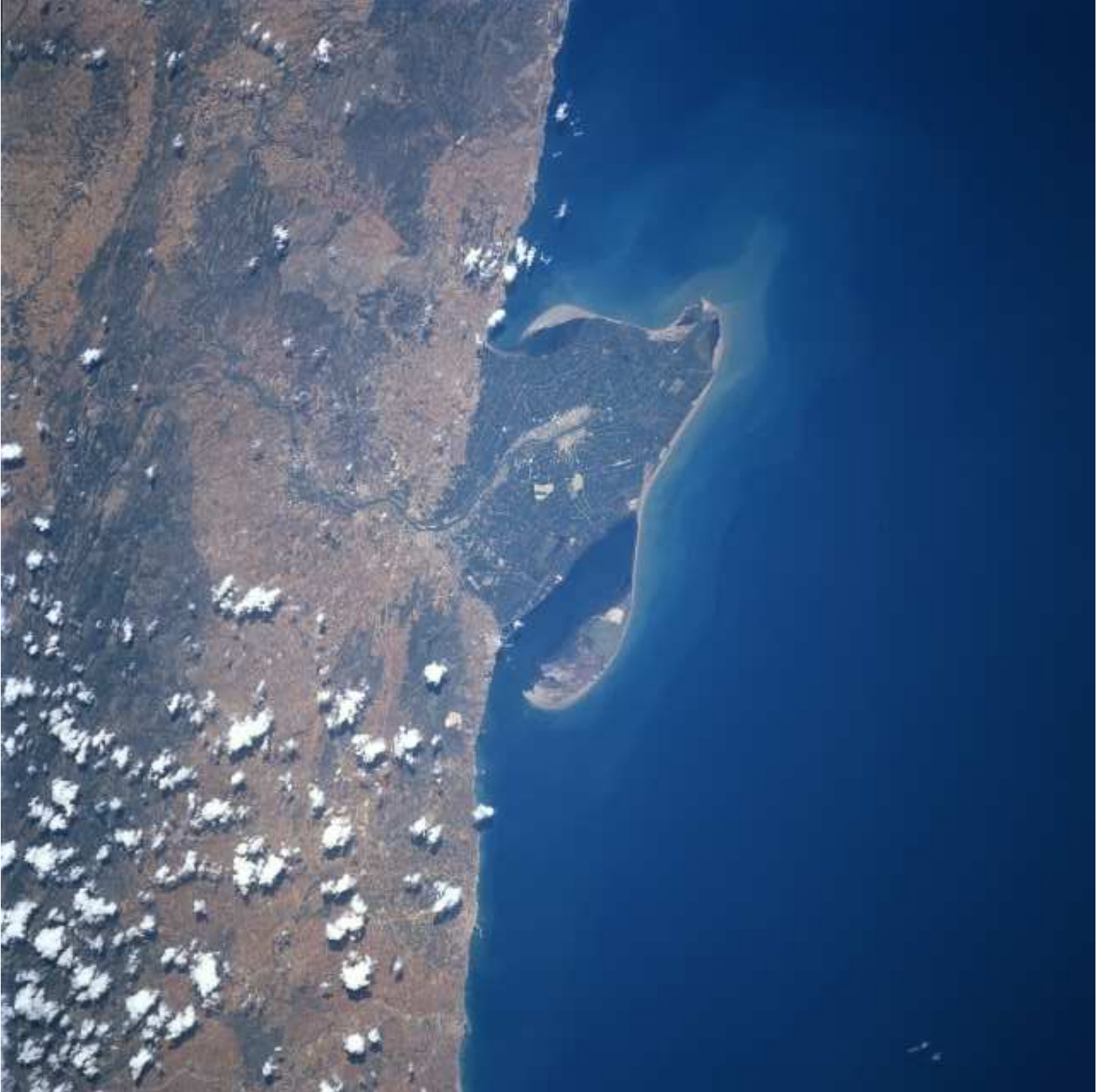




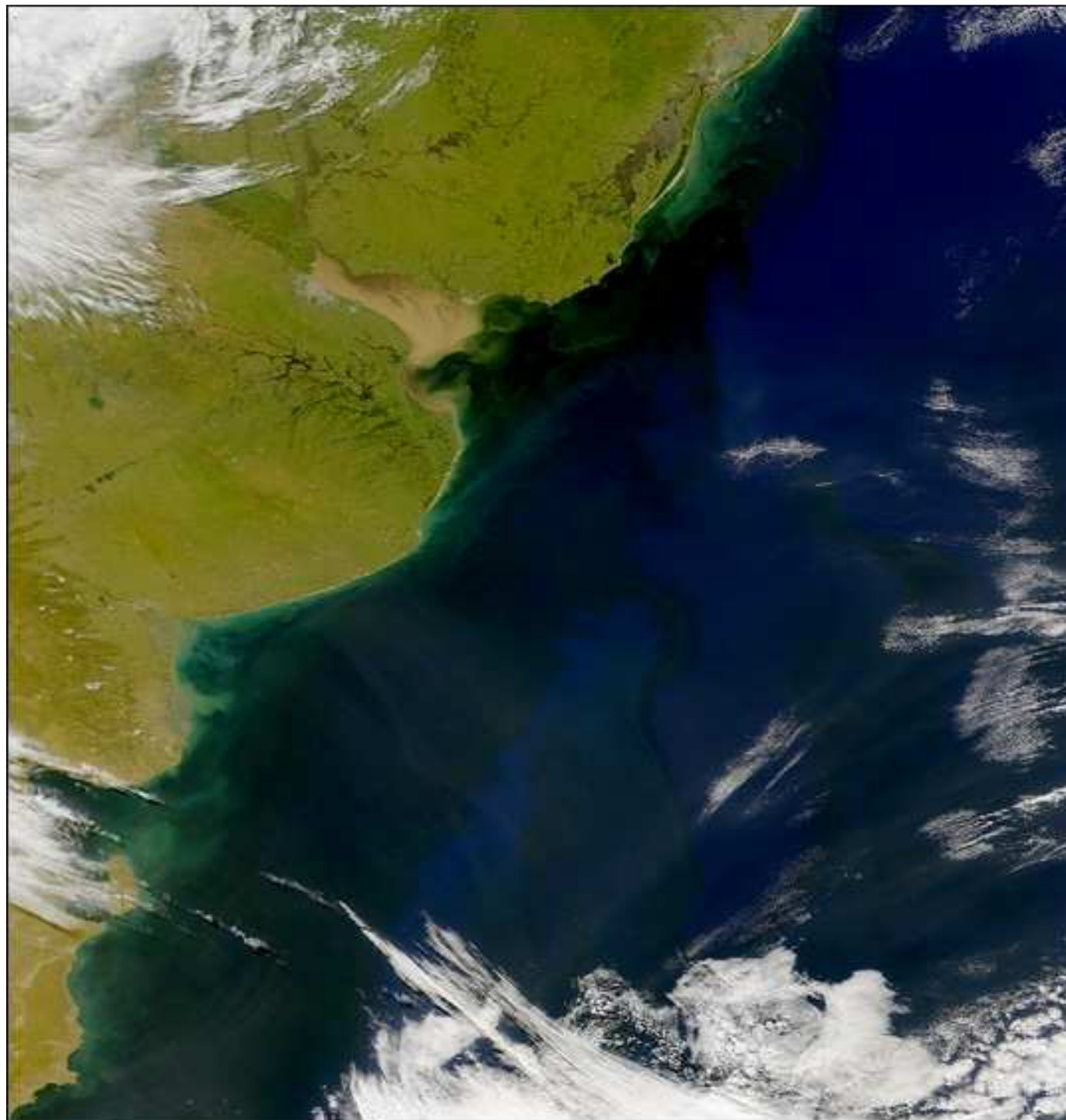
a



b



sedimentos



Estuario de Río de la Plata



TORRENTES



Estiaje



Endorreismo



LAGUNAS DE CALATRAVA



Lago glaciar

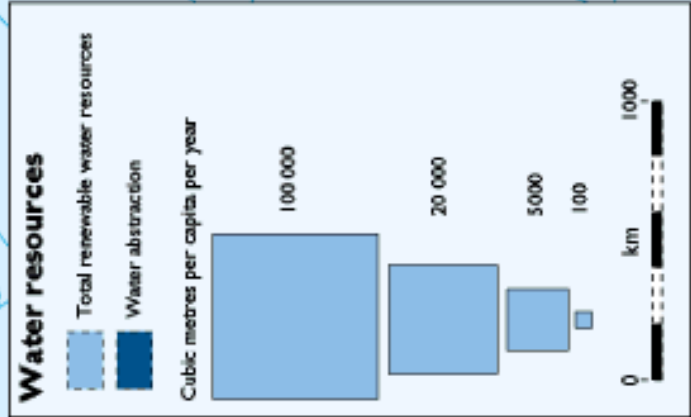
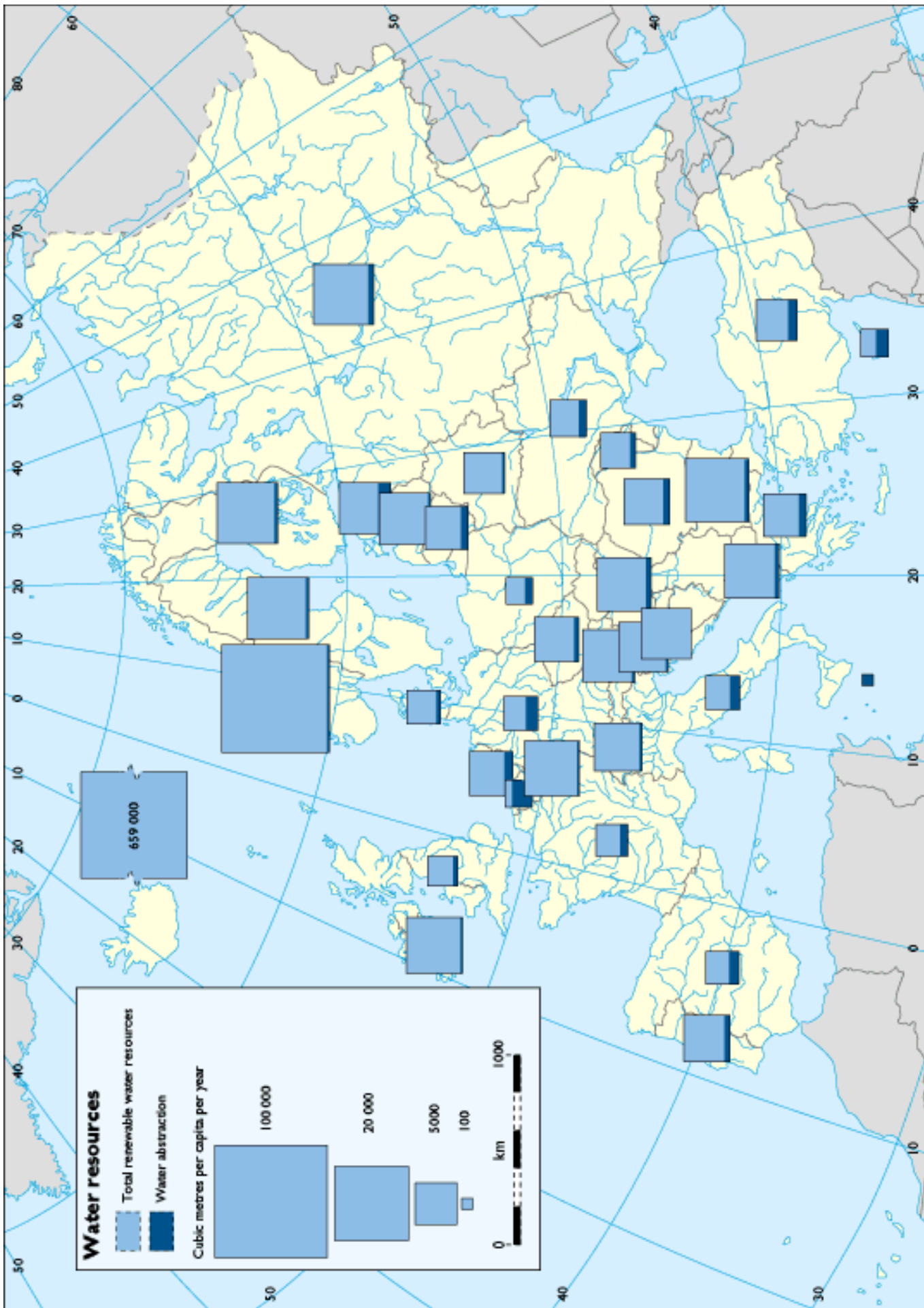


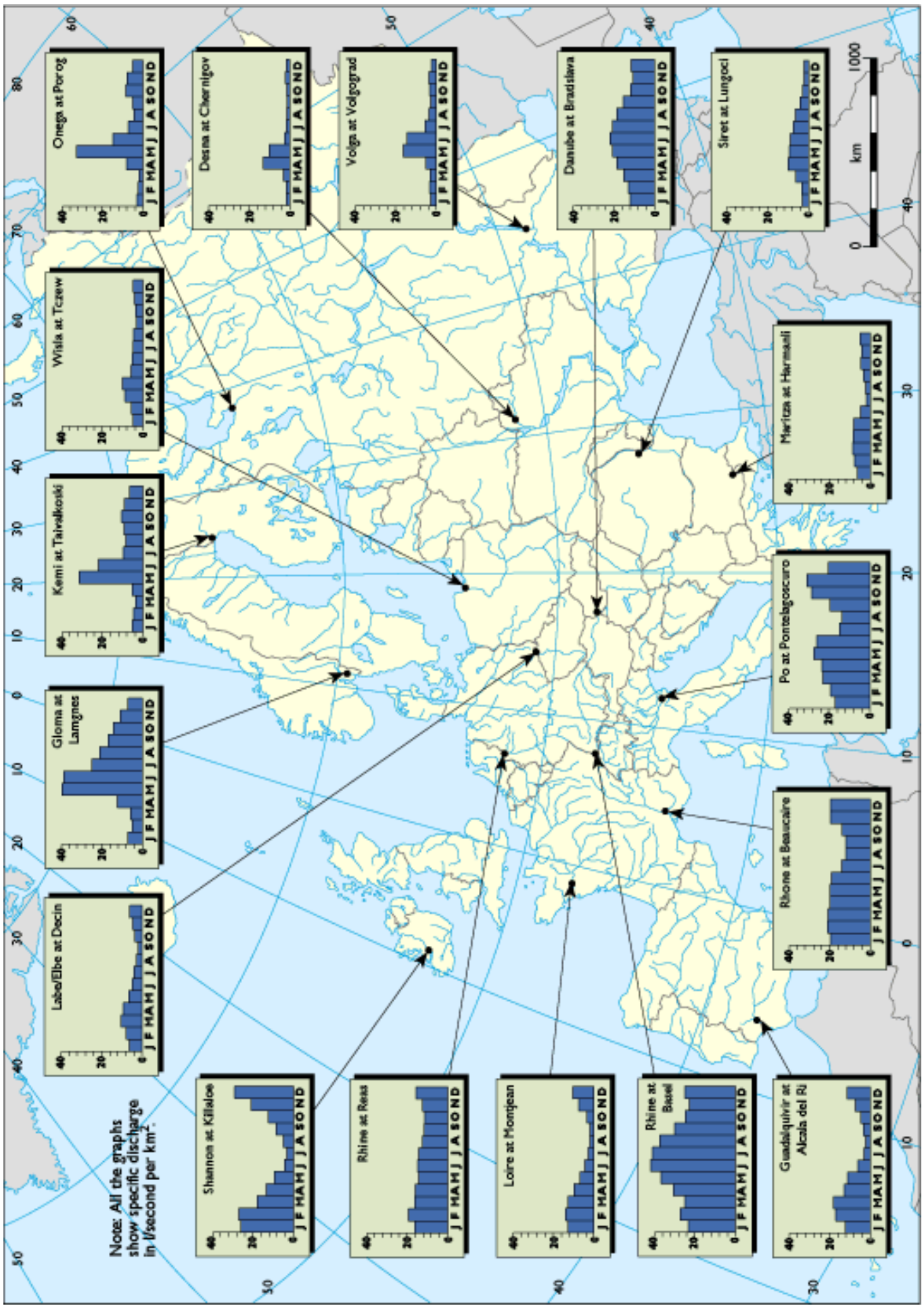
LAGUNA NEGRA, SORIA



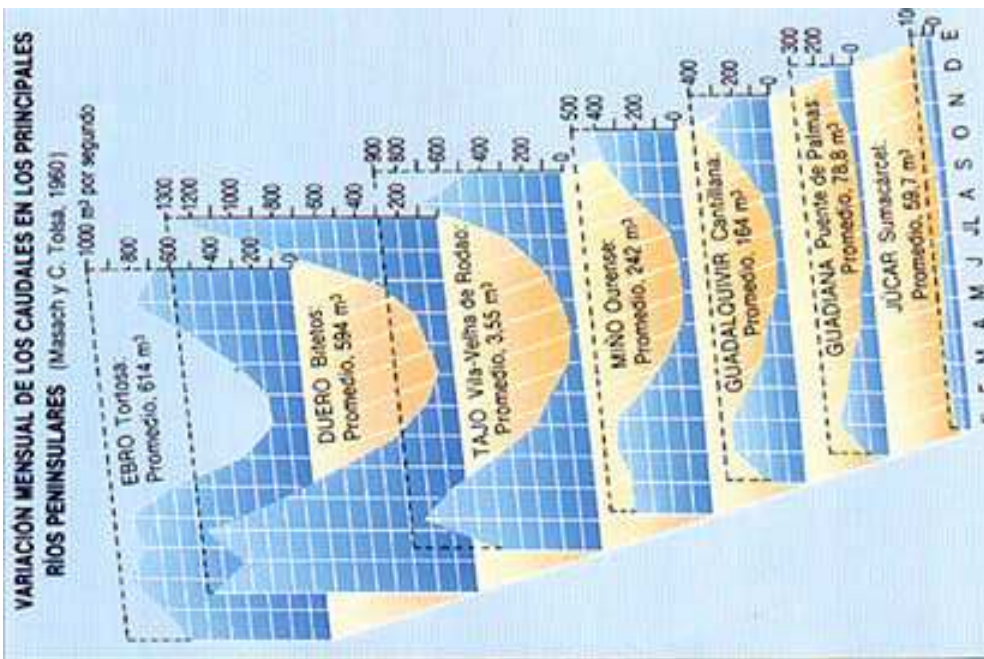
TORCA

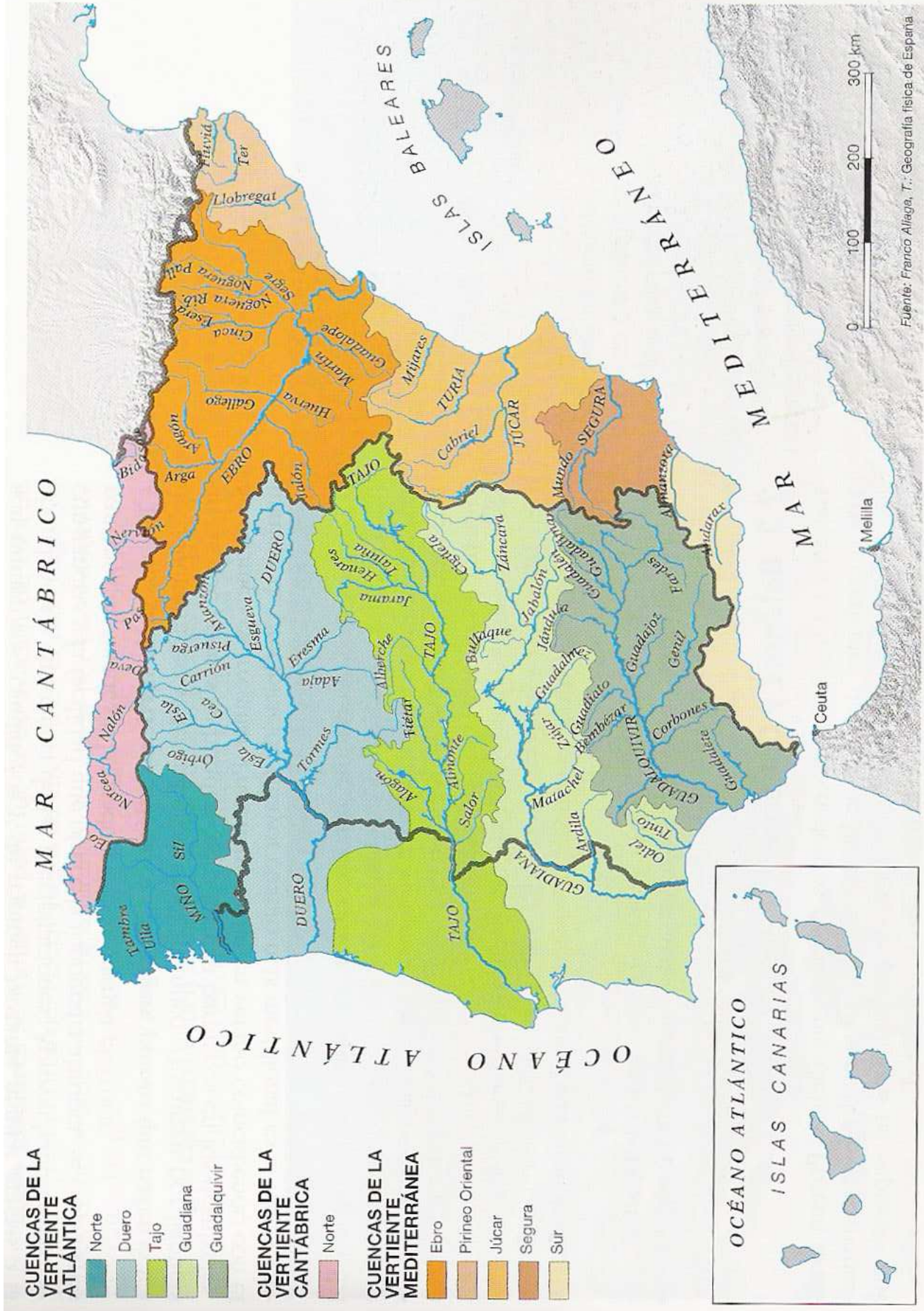












Mapa de cuencas y vertientes hidrográficas.



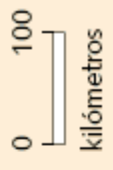
VERTIENTES Y CUENCAS HIDROGRÁFICAS

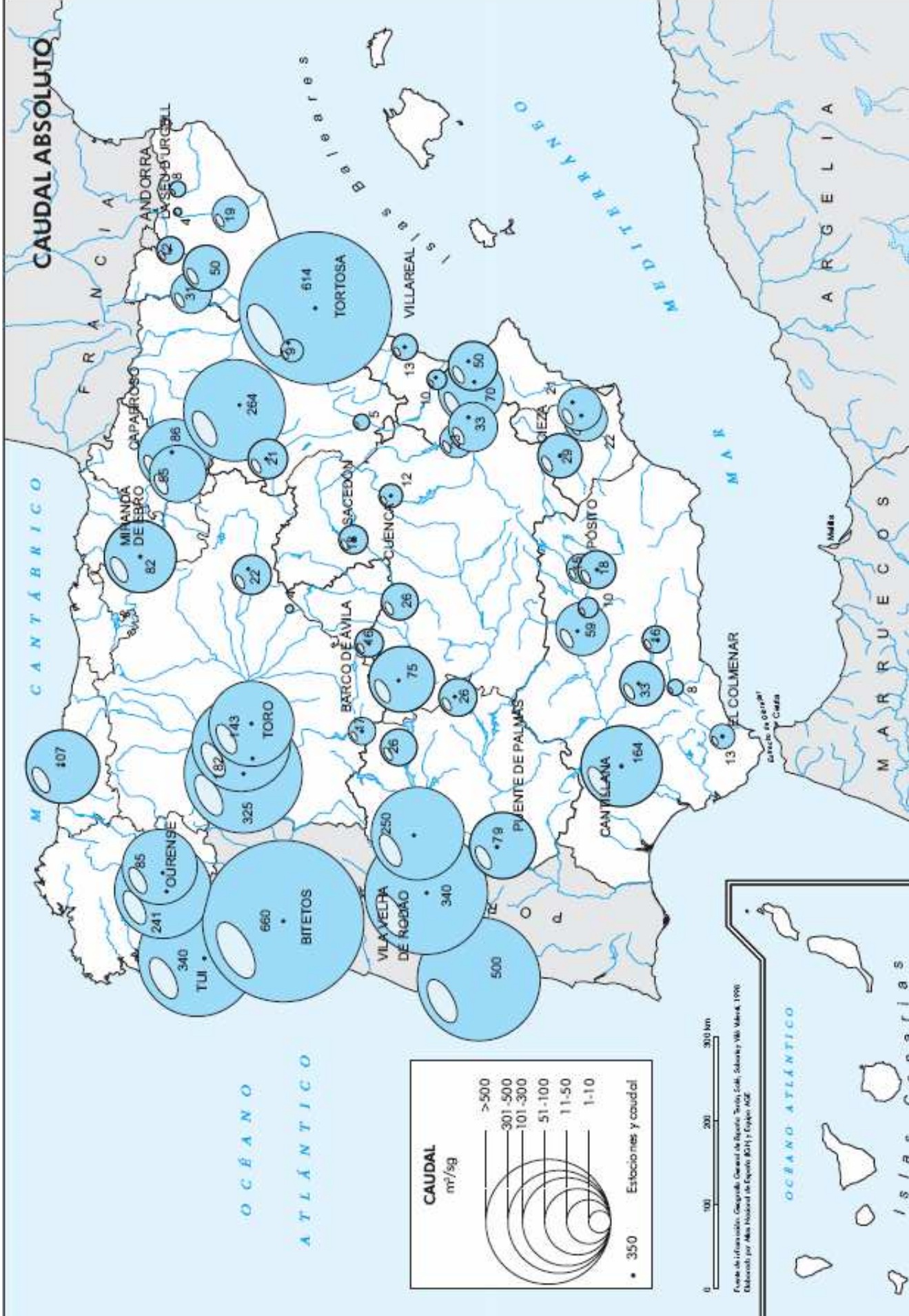
VERTIENTES

- Vertiente cantábrica
- Vertiente atlántica
- Vertiente mediterránea
- Límite de vertiente

CUENCAS

- Límite de cuencas importantes





CAUDAL ABSOLUTO

MAR CANTÁBRICO

OCEANO ATLANTICO

0 100 200 300 km

Fuente de información: Geografía, Caudal de Ríos de España. Tercer Ciclo, Solano y Val, 1990.
Elaborado por Mapa Hidrológico de España (MHI) y España ADE

OCEANO ATLANTICO

ISLAS CANARIAS

FRANCIA

ANDORRA
LUSITANIA
BURGUNDIA

TORTOSA
614

264

MIRANDA DE EBRO
82

107

OURENSE
241

BITETOS
660

340
TUJI

VILA VELHA DE NOBRO
340

500

325
TORO

250
VILA VELHA DE NOBRO

79
PIENTE DE PALMAS

164
CANTILLANA

13
EL COLMENAR

MAR

MARRUECOS

ARGENTINA

Baleares

MEDITERRANEO

VILLAREAL

50

50

29

18

33

26

26

75

26

26

26

26

26

26

26

26

26

26

26

26

26

186

85

43

43

43

43

43

43

43

43

43

43

43

43

43

43

43

43

19

19

19

19

19

19

22

22

22

22

22

22

21

21

21

21

21

21

13

13

13

13

13

13

10

10

10

10

10

10

5

5

5

5

5

5

12

12

12

12

12

12

22

22

22

22

22

22

31

31

31

31

31

31

4

4

4

4

4

4

3

3

3

3

3

3

3

3

3

3