

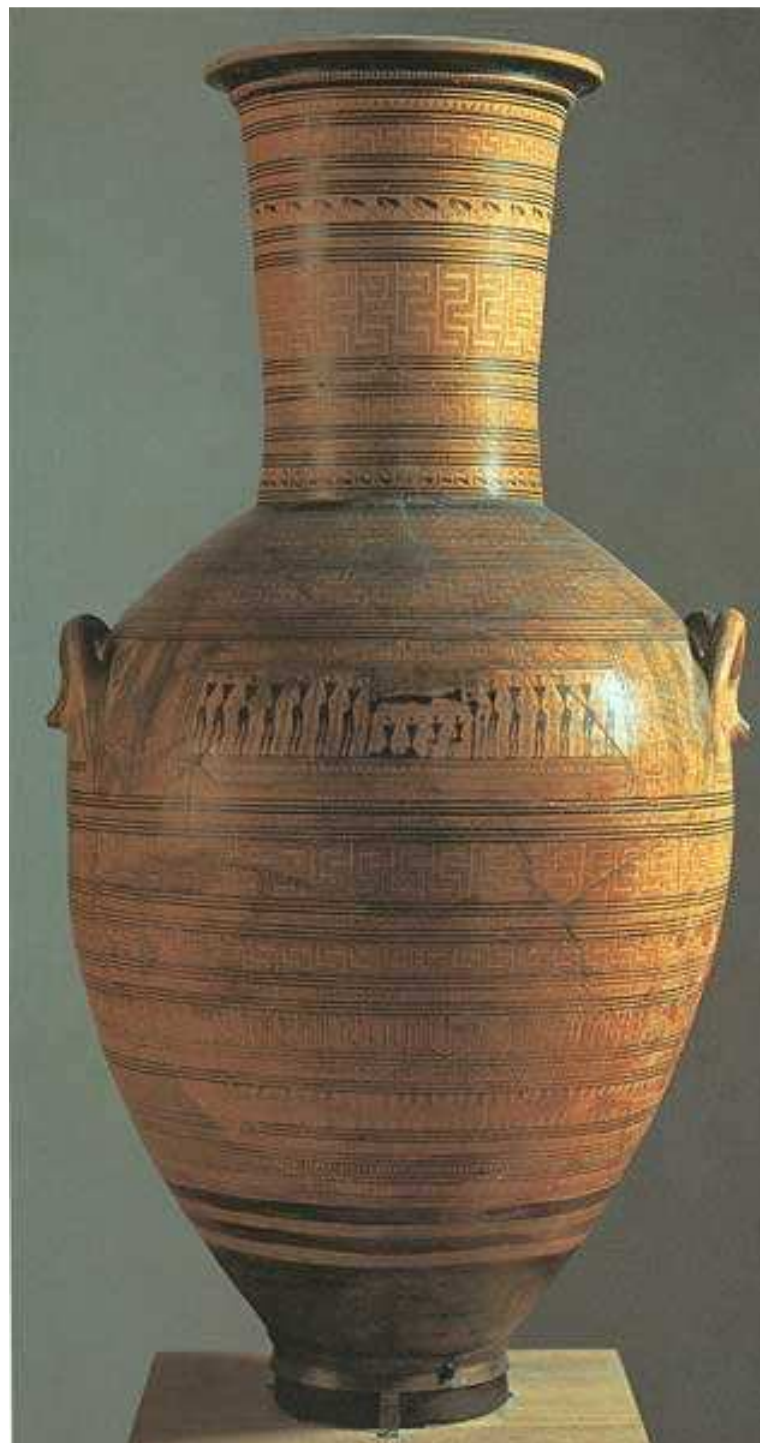
CERÁMICA GRIEGA

ESTILO GEOMÉTRICO

1000-750



ÁNFORA
DIPYLON



ÁNFORA DIPYLON, DETALLE



ÁNFORA DIPYLON

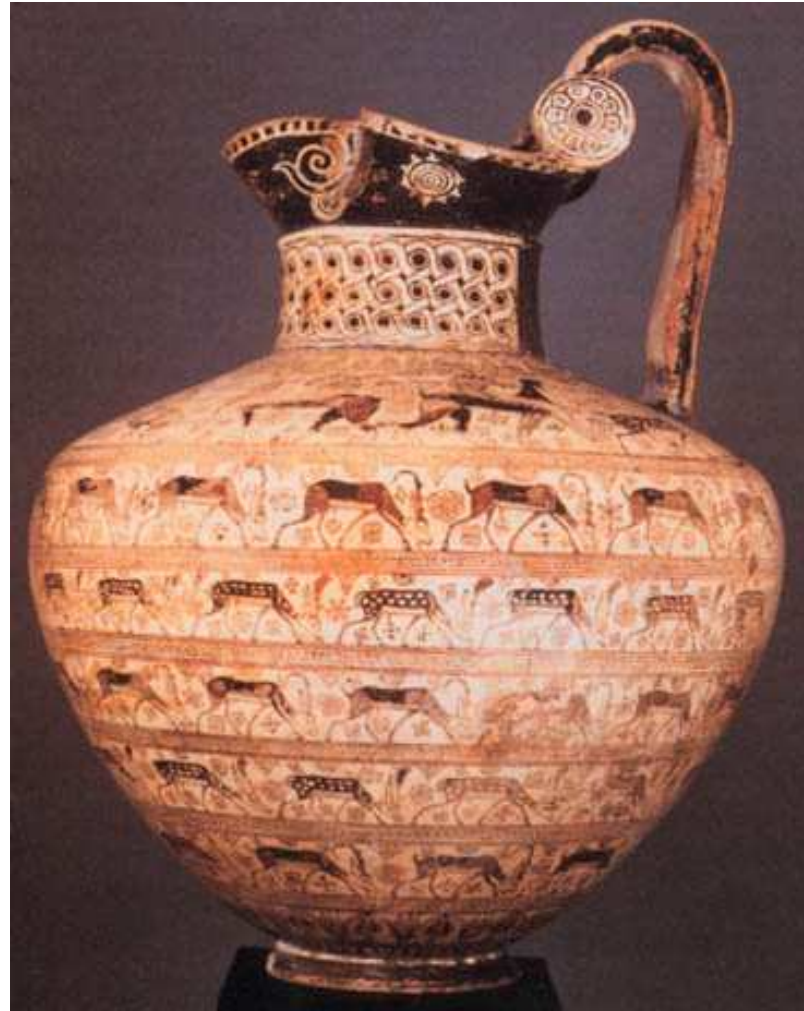


CERÁMICA GRIEGA

ESTILO ORIENTALIZANTE

VII-PRINCIPIOS VI

VASO CORINTIO



CERÁMICA GRIEGA

ESTILO ARCAICO

575-500

VASO FRANÇOIS







CERÁMICA GRIEGA

ESTILO CLÁSICO

500-400



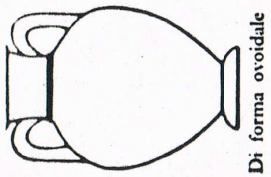




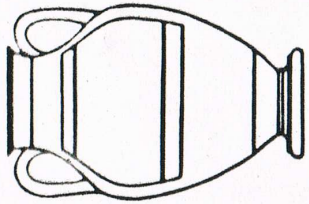




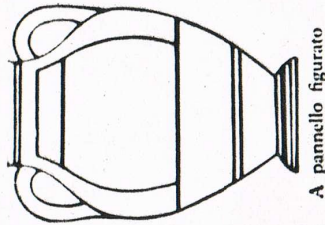
Tav. A
ANFORE e forme simili



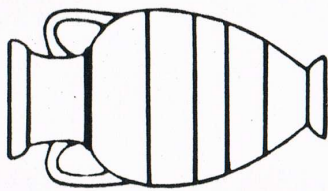
Di forma ovoidale



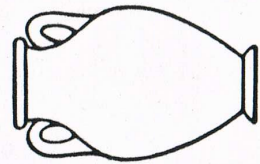
A pannello figurato



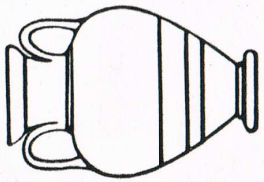
A pannello figurato



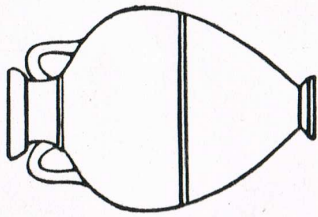
Di tipo tirrenico



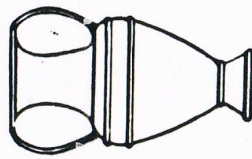
A collo non separato dal corpo



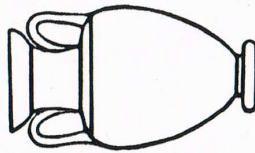
A collo separato dal corpo



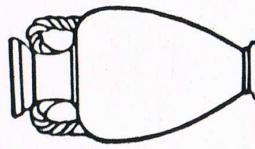
Di tipo panatenaico



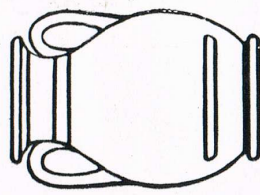
Di tipo nicostenico



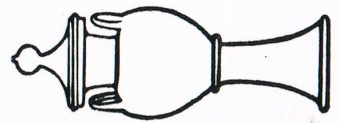
Di tipo nolano



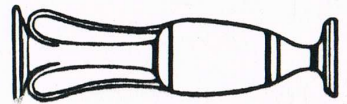
Con anse a cordone



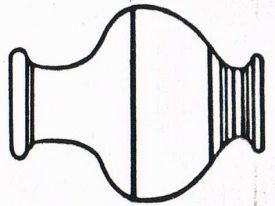
Pelike



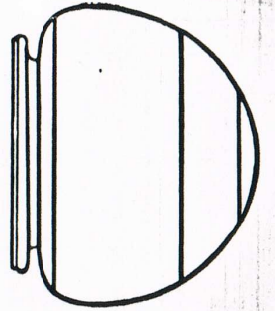
Lebetes nuziale



Louptrophoros

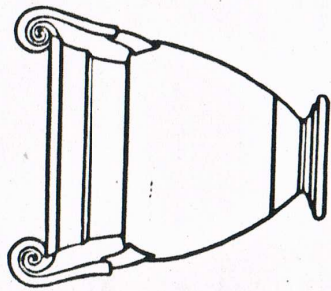


Dinos

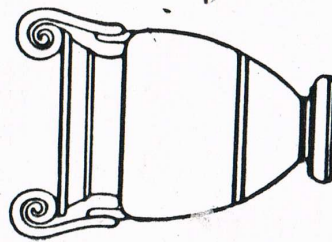


Pyxter

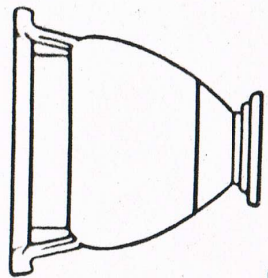
Tav. B.
CRATERI, IDRIE e simili



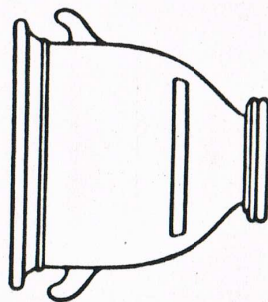
Cratere con volute di forma arcaica, a figure nere e dell'inizio delle figure rosse



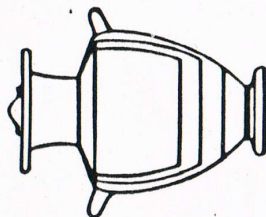
Cratere con volute di forma più sviluppata, a figure rosse



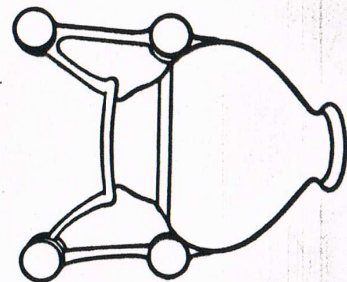
Cratere a colonnette o Kelebe



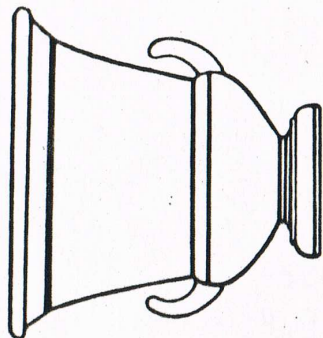
Cratere a campana normale



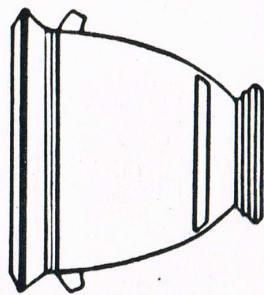
Idria attica arcaica



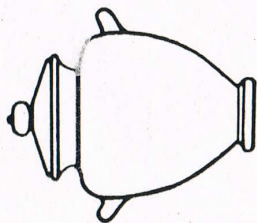
Trozzella apula



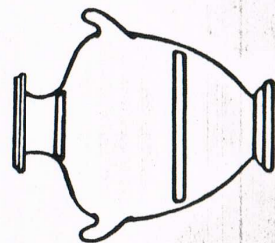
Cratere a calice



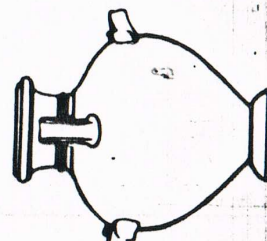
Cratere a campana con anse oblique verso il basso



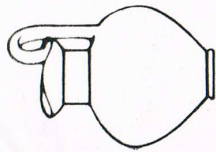
Stannos



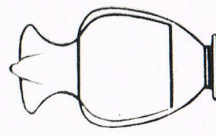
Kalpis



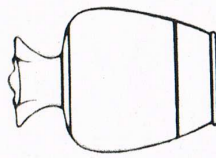
Idria di tipo corinzio e di tipo attico



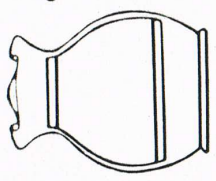
Oinochoe di tipo corinzio



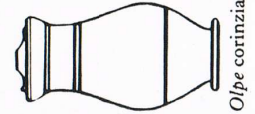
Oinochoe attica a bocca ondulata o trilobata



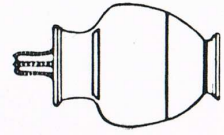
Oinochoe attica a bocca ondulata o trilobata



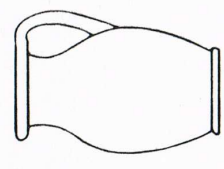
Oinochoe attica a bocca ondulata o trilobata



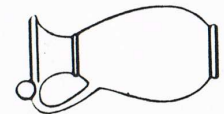
Olpe corinzia



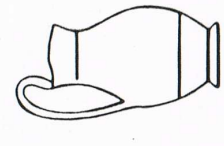
Oinochoe attica a bocca rotonda



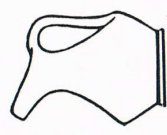
Oinochoe attica a bocca ondulata (anche olpe attica)



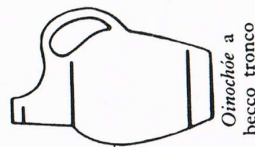
Olpe corinzia



Olpe attica arcaica (tipo di Amasis)



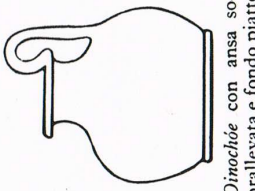
Oinochoe a becco obliquo



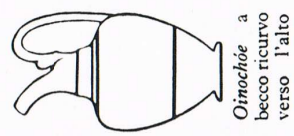
Oinochoe a becco tronco



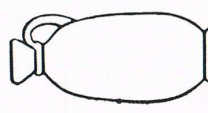
Oinochoe a fondo piatto



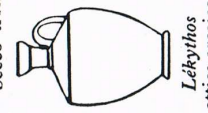
Oinochoe con ansa sovrappallevata e fondo piatto



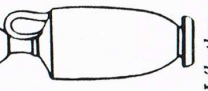
Oinochoe a becco ricurvo verso l'alto



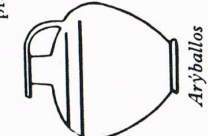
Lekythos corinzia ed attica arcaica



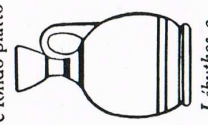
Lekythos attica arcaica a figure nere



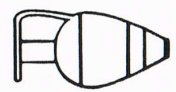
Lekythos a figure rosse



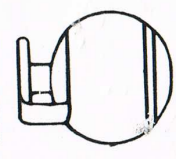
Aryballos a protocorinzio arcaico



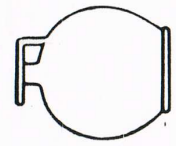
Lekythos a corpo ariballico



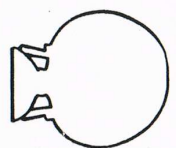
Aryballos ovoidale protocorinzio di et  media e tarda



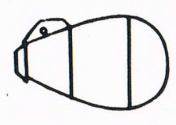
Aryballos globulare corinzio



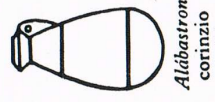
Aryballos globulare corinzio



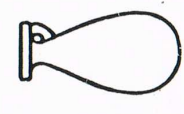
Aryballos attico (raro)



Alabastron protocorinzio

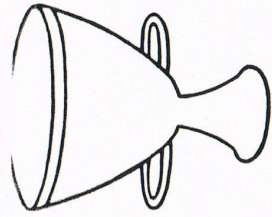


Alabastron corinzio primitivo e medio



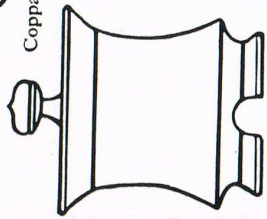
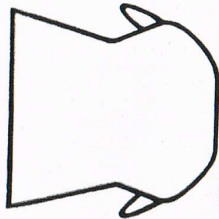
Alabastron corinzio tardo

KYLIKES,
PISSIDI

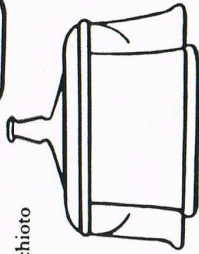


Coppa di tipo chioto

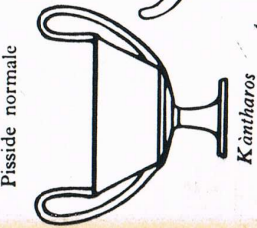
Lakaina laconica



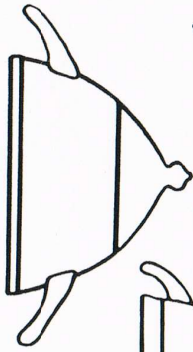
Pisside normale



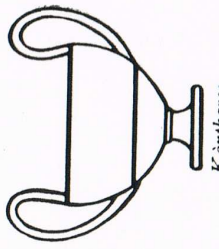
Pisside a tripode



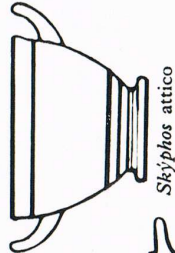
Kantharos



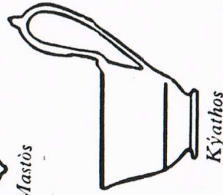
Mastos



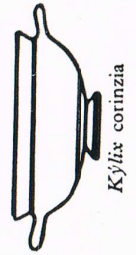
Kantharos



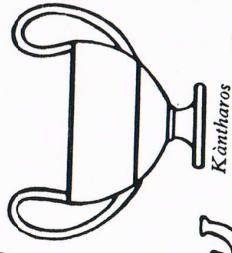
Skyphos attico



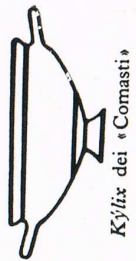
Kyathos



Kylix corinzia

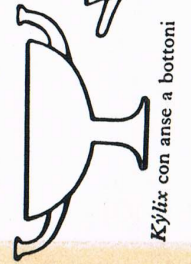


Kantharos

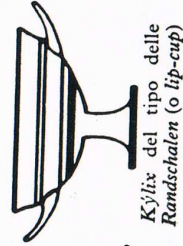


Kylix dei «Comasti»

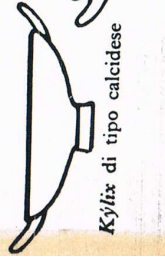
Skyphos (o kolyte) corinzio



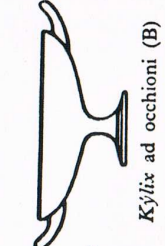
Kylix con anse a bottoni



Kylix del tipo delle Randschalen (o tip-cup)



Kylix di tipo calcidese



Kylix ad occhioni (B)

Kylix del tipo delle Bandschalen (o hand-cup)



Kylix ad occhioni (C)

Kylix ad occhioni (A)